

English(Metric)

Specifications:

	A600-PT	A400-PT
Pump Size (Maximum Piston Diameter x Stroke)	7 x 8 (178 x 203)	7 x 8 (178 x 203)
Standard Piston Sizes	4, 4½, 5, 5½, 5¾, 6, 6½, 7 (102, 114, 127, 140, 146, 152, 165, 178)	4, 4½, 5, 5½, 5¾, 6, 6½, 7 (102, 114, 127, 140, 146, 152, 165, 178)
Rated Brake Input Horsepower	(kw) 600 at 175 rpm (447 at 175 r/min.)	400 at 175 rpm (298 at 175 r/min.)
Rated Working Pressure: Discharge	psi (kPa) 6000 (41369)	6000 (41369)
Suction	psi (kPa) 275 (1896)	275 (1896)
Hydrostatic Test Pressure: Discharge	psi (kPa) 9000 (62053)	9000 (62053)
Suction	psi (kPa) 425 (2930)	425 (2930)
Fluid Suction Connection (ANSI 150 Lb. R.F.)	inches (mm) 6 (152)	6 (152)
Fluid Discharge Connection (API Flange 5000 Lb. R.T.J.)	inches (mm) 4 (102)	4 (102)
Crankcase Oil Capacity	gallons (liters) 42 (159)	42 (159)
Gear Ratio	4.6:1 or 6.9:1 4.6:1 or 6.9:1	4.6:1 or 6.9:1 4.6:1 or 6.9:1
Input Shaft Extension: Diameter x Length	inches (mm) 4.750 x 5.750 (121 x 146)	4.250 x 4.875 (108 x 124)
Keyway Width x Depth	inches (mm) 1 x 1½ (25 x 13)	1 x 1½ (25 x 13)
Weight with Standard Equipment (Est.)	pounds (kg) 19600 (8890)	18090 (8205)

	A600-PT	A400-PT
Overall Length	feet/inches (mm) 10'11½" (3335)	10'11½" (3335)
Overall Width	feet/inches (mm) 8'3" (2515)	8'3" (2515)
Overall Height	feet/inches (mm) 5'5" (1651)	5'5" (1651)

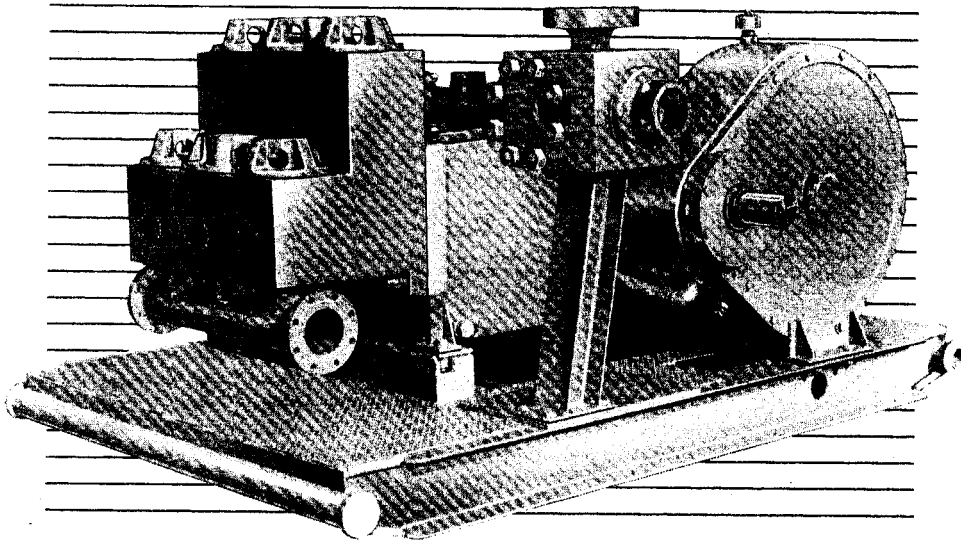
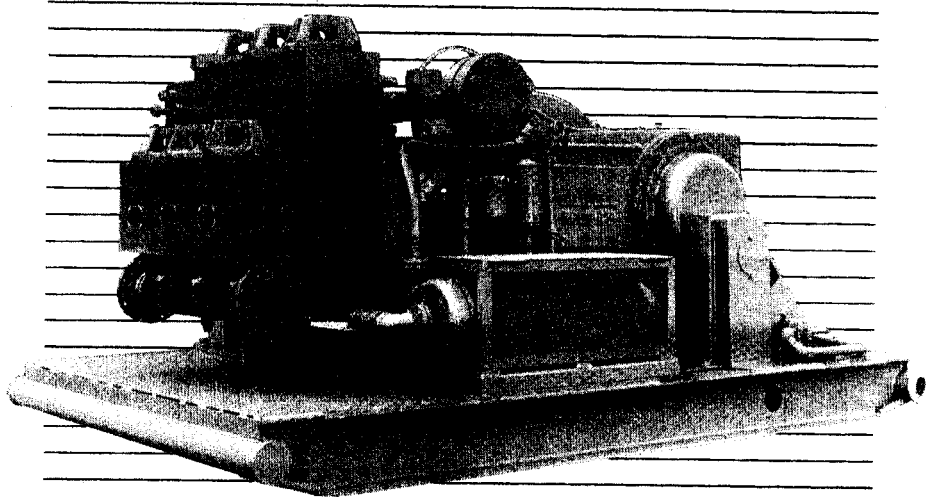
Performance Data English(Metric) A600-PT A400-PT

Piston Size Inches (mm)	A600-PT Maximum Pressure psi(kPa)	A400-PT Maximum Pressure psi(kPa)	Gallons (Liters) per Rev.	DISPLACEMENT Gallons per minute at Pump Speeds (rpm) of: (Liters per Second at Pump Speeds (r/min) of:*						
				50	75	100	125	150	175	
				4 (102)	4058(27979)	2701(18623)	1.31( 4.96)	65( 4.10)	98( 6.18)	131( 8.26)
4½(114)	3207(22111)	2134(14713)	1.65( 6.25)	82( 5.17)	124( 7.82)	165(10.41)	206(13.00)	247(15.58)	289(18.23)	
5 (127)	2597(17906)	1729(11921)	2.04( 7.72)	102( 6.44)	153( 9.65)	204(12.87)	255(16.09)	308(19.31)	357(22.52)	
5½(140)	2147(14803)	1429(9853)	2.47( 9.35)	123( 7.76)	185(11.67)	247(15.58)	309(19.49)	370(23.34)	432(27.25)	
5¾(146)	1964(13541)	1307(9011)	2.70(10.22)	135( 8.52)	202(12.74)	270(17.03)	337(21.26)	405(25.55)	472(29.78)	
6 (152)	1804(12438)	1200(8274)	2.94(11.13)	147( 9.27)	221(13.94)	294(18.55)	368(23.22)	442(27.89)	514(32.43)	
6½(165)	1537(10597)	1023(7053)	3.45(13.06)	172(10.85)	259(16.34)	345(21.77)	432(27.25)	517(32.62)	603(38.04)	
7 (178)	1325(9136)	882(6081)	4.00(15.14)	200(12.62)	300(18.93)	400(25.24)	500(31.55)	600(37.85)	700(44.16)	
<b>A600-PT</b>										
Brake Input Horsepower* (Kilowatt)			172(128)	258(192)	343(256)	429(320)	515(384)	601(448)		
Input Shaft rpm (r/min) w/6.9:1 ratio			346(346)	518(518)	690(690)	863(863)	1035(1035)	1208(1208)		
Input Shaft rpm (r/min.) w/4.6:1 ratio			230(230)	345(345)	460(460)	576(576)	691(691)	806(806)		
<b>A400-PT</b>										
Brake Input Horsepower* (Kilowatt)			114( 85)	171(128)	229(171)	286(213)	343(256)	400(298)		
Input Shaft rpm (r/min.) w/6.9:1 ratio			346(346)	518(518)	690(690)	863(863)	1035(1035)	1208(1208)		
Input Shaft rpm (r/min.) w/4.6:1 ratio			230(230)	345(345)	460(460)	576(576)	691(691)	806(806)		

\* Based on 90% Mechanical and 100% Volumetric Efficiency.

## Triplex Mud Pumps

### The A600-PT and A400-PT Single Acting



The A600-PT, one of OILWELL's line of single acting triplex mud pumps, was designed specially to fill the need for light weight mobile drilling equipment. The reduction in size and weight, with no sacrifice in performance or reliability, was made possible primarily by its all-welded stress-relieved steel power frame and the use of three separate forged steel fluid cylinders. Its many big pump features include:

- Interchangeable and individually replaceable fluid cylinders
- Separate bolt-on suction and discharge manifolds
- Gear reducer — pump adaptable to drive from either side
- Four main bearing supported crankshaft
- Pressure-cascade lubrication
- Adjustable and replaceable crosshead guides and crosshead shoes.
- Metal-to-metal liner retention.
- Two-piece piston rods.
- Liner flushing system.
- Wide range of piston/liner sizes.
- Discharge strainer cross.