



BEEBE
INTERNATIONAL, INC.

ULTRA-LO MANUAL CHAIN HOIST OPERATION & MAINTENANCE MANUAL FOR

MODEL NO. ULB-100
SERIAL NO. _____
B/M NO. M12550-B
P.O. NO. _____
DATE ISSUED 10/29/86

**BEFORE USING THIS PRODUCT
READ
WARNING LABELS
AND
OPERATING INSTRUCTIONS**

BEEBE INTERNATIONAL, INC
2724 SIXTH AVENUE SOUTH, SEATTLE, WASHINGTON 98134
PHONE (206) 624-0466, TELEX: 328795, P.O. BOX 24046

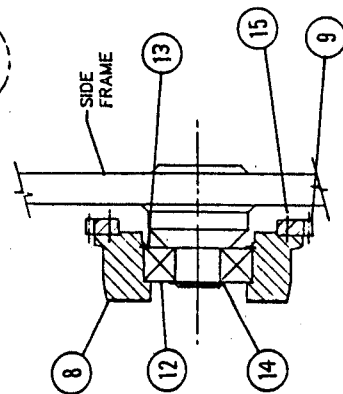
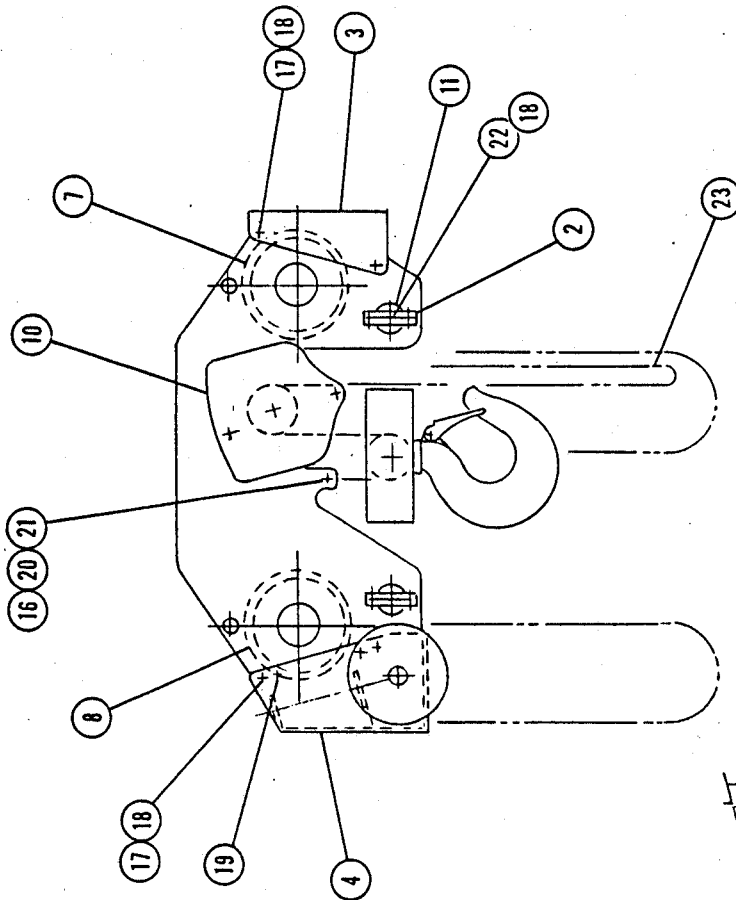
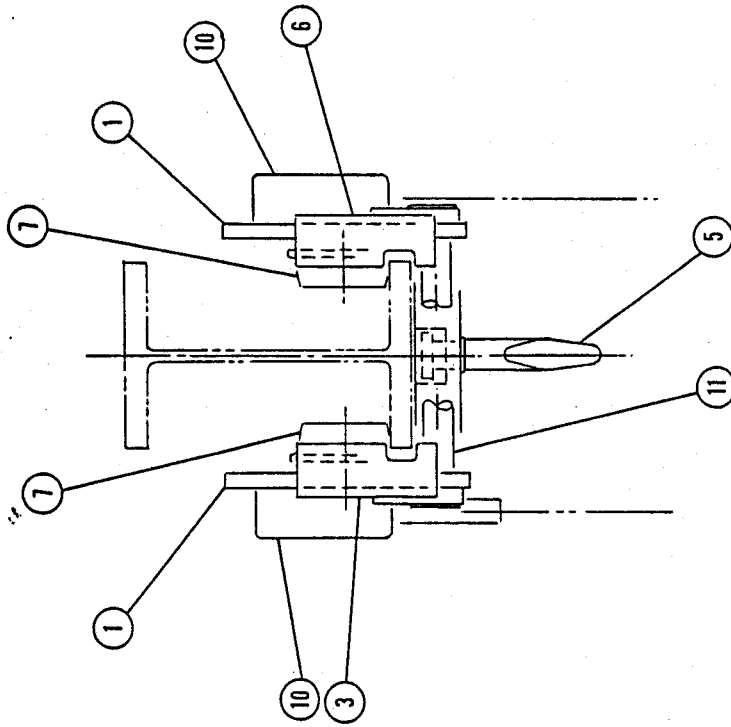
WARNING

TROLLEY INSTALLATION

The trolley has been designed and built for installation by sliding the trolley on the end of the support beam and does not require disassembly of the trolley hoist.

If vertical installation is required, please contact Beebe International, Inc. in Seattle before this type of Installation is performed.

Failure to do so could cause the trolley drive gear assembly to disengage, enabling the parts to fall free from the trolley and may present a hazard to persons and or equipment.



MATL.	B/A # M12550, M12650	FRAC. ± TOL. DEC. ± 1/2" ANG. ± 1/2"	Ltr.	Date	Revision
		Dwn. SPW			
		Ckd. PLS			
		Date 10-28-86			
		Scale			

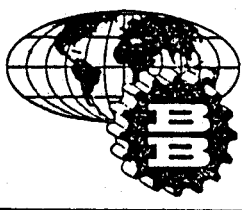
E 86-042
HOIST-ULTRA LOW
ULB-100

DWG NO. B1121639
REV.

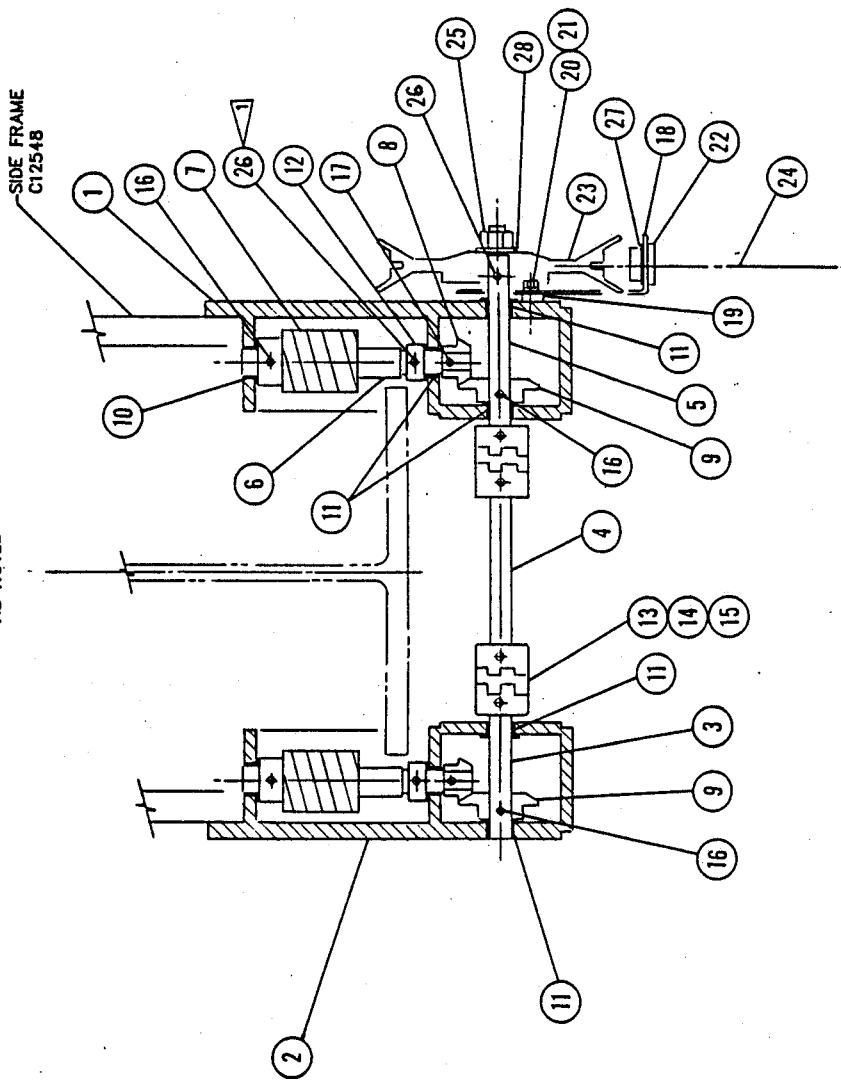
BEEBE INTERNATIONAL, INC. SEATTLE

Item No.	Description	Qty.	Part No.	Remarks
1	BRACKET, R.H.	1	B12558	
2	BRACKET, L.H.	1	B12559	
3	SHAFT	1	B12510-4	
4	SHAFT	1	B12510-5	
5	SHAFT	1	A12578	
6	SHAFT	2	B12579	
7	GEAR - WORM	2	A12580	
8	BEVEL GEAR	2	A12581	
9	BEVEL GEAR	2	A12582	
10	BUSHING	2		
11	BUSHING	5		
12	COLLAR	2		
13	COUPLING HALF	4	A12524	
14	COUPLING INSERT	2		
15	PIN	4		
16	PIN	4		
17	PIN	2		
18	HAND CHAIN GUIDE BRACKET	1	A12583	
19	SPACER	2	A12584	
20	SCREW - HEX HEAD	2		
21	WASHER - LOCK	2		
22	BUSHING	2	2982-1	
23	HANDWHEEL	1	A12538	
24	HAND CHAIN			
25	NUT-LOCK	1		
26	PIN	3		
27	SNAP - RING	2	51398	
28	WASHER - FLAT	1		
29				
30				
31				
32				
33				
34				
35				
36				
37				
38				

BILL OF MATERIAL

	Assy. Dwg. No.	Ltr	Date	Revision	E86-042 TROLLEY DRIVE ASSEMBLY ULB-100				
	B12640	A	10-16-86	ADD ITEMS 23-26					
		B	10-29-86	ADD ITEMS 27,28					
	Dimen. Dwg. No.								
	B12440								
Dwn. FLANAGAN									
Ckd.									
Date: 10-2-86									
BEEBE INTERNATIONAL, INC. SEATTLE				Drawing No.				Revision	
				M	1	2	5	6	4

SYMM EXCEPT
AS NOTED



NOTES

- 1 SLIDE COLLAR (12) AGAINST BUSHING TO ELIMINATE ENDPLAY OF (6) SHAFT (.000 TO .005 END PLAY DESIREABLE)
- DRILL 1/4" FOR (26) PIN

MATL	B/M # M12564	Revision	Ltr.	Date
	FRAC. 1			
	TOL. DEC. 1			
	ANG. 1/2"			
	Dwn. SW			
	Ckd. <i>PS</i>			
	Date 10-28-66			
	Scale			

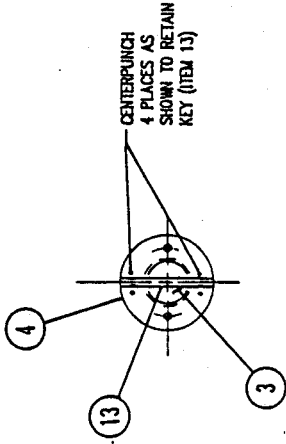
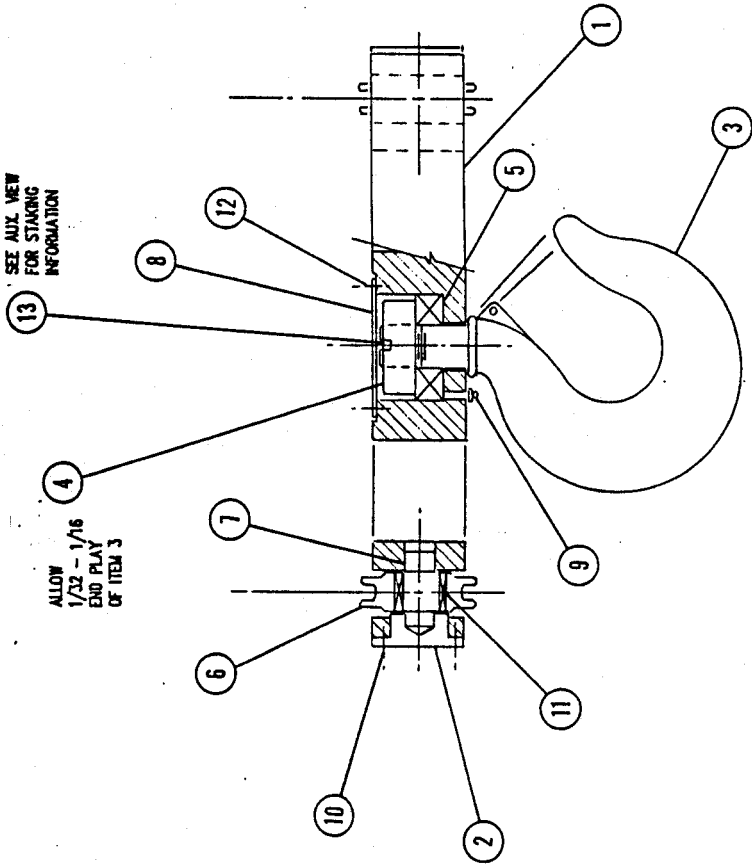
TROLLEY DRIVE
HOIST-ULTRA LOW
ULB-100

BEEBE INTERNATIONAL, INC. SEATTLE

DWG. NO. **B112640** REV.

SEE AUX VIEW
FOR STAKING
INFORMATION

ALLOW
1/32 - 1/16
END PLAY
OF ITEM 3



TOP VIEW OF ITEMS 3 & 4

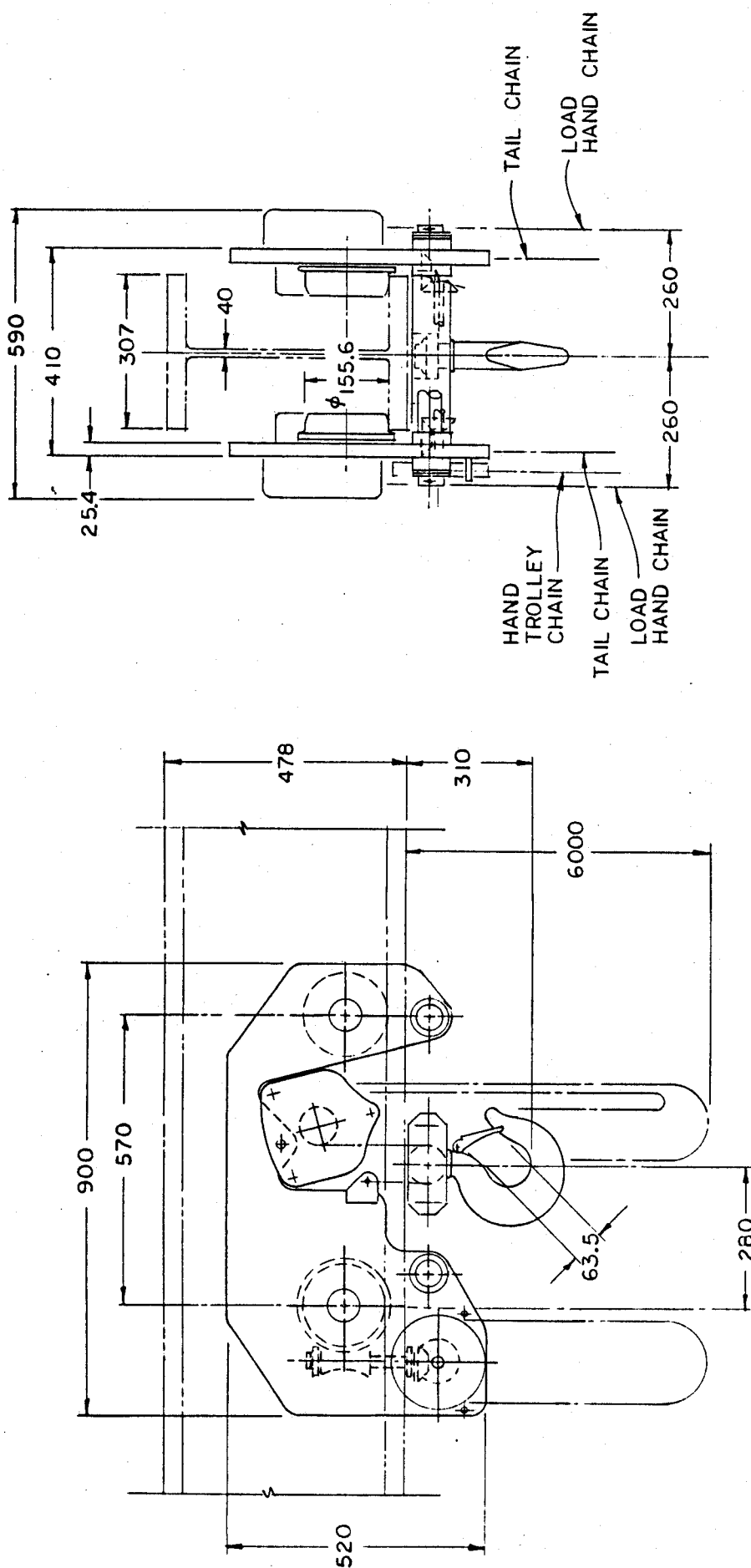
MATL	B/M # M12577	FRAC. ± TOL. DEC. ± 12° Dwn. SPW Ckd. <i>AS</i> Date 10-20-86 Scale	Ltr.	Date	Revision
			E 86-042		
			BOTTOM BLOCK HOIST-ULTRA LOW ULB-100		
BEEBE INTERNATIONAL, INC. SEATTLE			DWG. NO. B112641 REV.		
			B112641		

C

1C

C

B 12440



BEEBE INTERNATIONAL, INC. SEATTLE

MODEL: _____

CUSTOMER: _____

P.O. NO.: _____

PROJECT: _____

ITEM NO.: _____



FRAC. #	Rev.
TOL. DEC. ± 1/2"	
Dwn. DEF	
Ckd.	
Date 9-2-56	
Scale	

10 TON MANUAL CHAIN
HOIST WITH INTEGRAL
GEARED TPOLEY
ULTRA LD HEADROOM

BEEBE INTERNATIONAL, INC. SEATTLE

DWG. NO. B12440

REV. B12440