

ABB INDUSTRI AS BROSCH
 This document must not be copied without our written permission and the contents thereof must not be imparted to a third party nor be used for any unauthorized purpose. Consequence will be prosecuted.

ISSUED FOR APPROVAL
 ISSUED FOR APPROVAL

A B C D E F G H J K L M N P R S T

Rev. C

Date: 04.12.94

DEPARTMENT: INK

DEPARTMENT: Dyrgehold

DEPARTMENT: DIMENSION DRAWING: SAMI STAR COMMON DC-BUS DRIVE

DEPARTMENT: HARDWARE GROUP OFFSHORE PRODUCTION PLATFORM

DEPARTMENT: PROJECT: AC DRIVE FOR TROLL PHASE 1 PDR

DEPARTMENT: DIMENSION DRAWING: SAMI STAR COMMON DC-BUS DRIVE

DEPARTMENT: PROJECT: AC DRIVE FOR TROLL PHASE 1 PDR

DEPARTMENT: DIMENSION DRAWING: SAMI STAR COMMON DC-BUS DRIVE

DEPARTMENT: PROJECT: AC DRIVE FOR TROLL PHASE 1 PDR

DEPARTMENT: DIMENSION DRAWING: SAMI STAR COMMON DC-BUS DRIVE

DEPARTMENT: PROJECT: AC DRIVE FOR TROLL PHASE 1 PDR

DEPARTMENT: DIMENSION DRAWING: SAMI STAR COMMON DC-BUS DRIVE

DEPARTMENT: PROJECT: AC DRIVE FOR TROLL PHASE 1 PDR

DEPARTMENT: DIMENSION DRAWING: SAMI STAR COMMON DC-BUS DRIVE

DEPARTMENT: PROJECT: AC DRIVE FOR TROLL PHASE 1 PDR

DEPARTMENT: DIMENSION DRAWING: SAMI STAR COMMON DC-BUS DRIVE

DEPARTMENT: PROJECT: AC DRIVE FOR TROLL PHASE 1 PDR

DEPARTMENT: DIMENSION DRAWING: SAMI STAR COMMON DC-BUS DRIVE

DEPARTMENT: PROJECT: AC DRIVE FOR TROLL PHASE 1 PDR

DEPARTMENT: DIMENSION DRAWING: SAMI STAR COMMON DC-BUS DRIVE

DEPARTMENT: PROJECT: AC DRIVE FOR TROLL PHASE 1 PDR

DEPARTMENT: DIMENSION DRAWING: SAMI STAR COMMON DC-BUS DRIVE

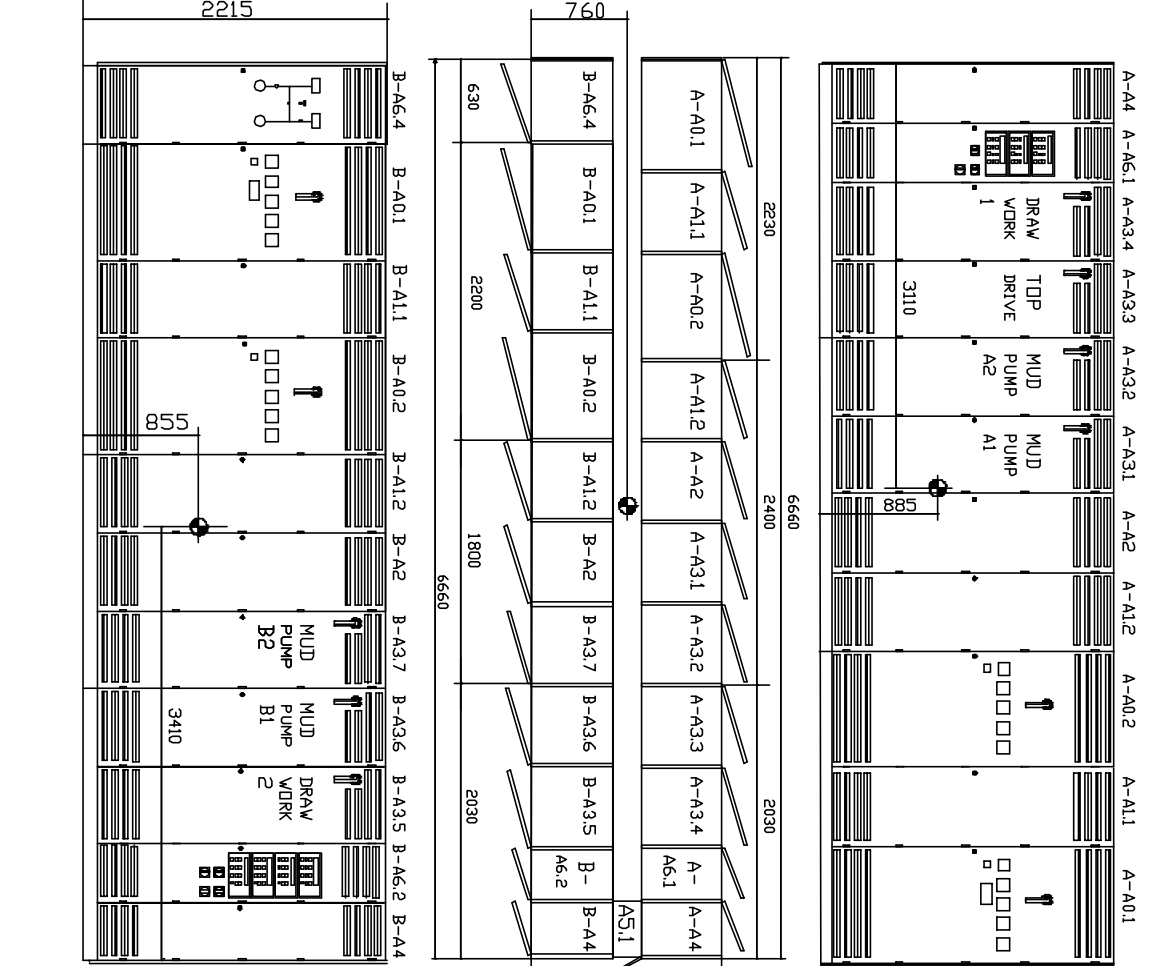
DEPARTMENT: PROJECT: AC DRIVE FOR TROLL PHASE 1 PDR

DEPARTMENT: DIMENSION DRAWING: SAMI STAR COMMON DC-BUS DRIVE

DEPARTMENT: PROJECT: AC DRIVE FOR TROLL PHASE 1 PDR

DEPARTMENT: DIMENSION DRAWING: SAMI STAR COMMON DC-BUS DRIVE

DEPARTMENT: PROJECT: AC DRIVE FOR TROLL PHASE 1 PDR



NOTE 1
 NOTE 2

FEEDER A
 NORMAL

FEEDER B
 ESSENTIAL

NOTE 1
 TOTAL SECTION LENGTH

NOTE 2
 SPLITTED SECTION LENGTHS

TOTAL CENTER OF GRAVITY

WEIGHT 7100 KG

LEGEND:

- FEEDER A:
- A-A01 = SAFUL 1600 F 690
- A-A1.1 = SAFUC 1600 F 690
- A-A0.2 = SAFUL 1600 F 690
- A-A1.2 = SAFUL 1600 F 690
- A-A-A2 = 2 * SAFUB 1000 F 690
- A-A3.1 = SAFUI 1000 F 690
- A-A3.2 = SAFUI 1000 F 690
- A-A3.3 = SAFUI 1000 F 690
- A-A3.4 = SAFUI 1000 F 690
- A-A6.1 = INTERC. CABINET A
- A-A4 = 3 * SAFUK 250 F 690
- AS1 = DMS CONNECTION CAB.

- FEEDER B:
- B-A4 = 3 * SAFUK 250 F 690
- B-A6.2 = INTERC. CABINET B
- B-A3.5 = SAFUI 1000 F 690
- B-A3.6 = SAFUI 1000 F 690
- B-A3.7 = SAFUI 1000 F 690
- B-A2 = 2 * SAFUB 1000 F 690
- B-A1.2 = SAFUC 1600 F 690
- B-A0.2 = SAFUL 1600 F 690
- B-A1.1 = SAFUC 1600 F 690
- B-A0.1 = SAFUL 1600 F 690
- B-A6.4 = CHANGEVER CABINET

DATE	04.12.94	REV.	C
DEPARTMENT	INK	REF. NO.	L 2730.8016
DEPARTMENT	Dyrgehold	TITLE	HARDWARE GROUP OFFSHORE PRODUCTION PLATFORM
DEPARTMENT	DIMENSION DRAWING: SAMI STAR COMMON DC-BUS DRIVE	DEPT AC DRIVE	
DEPARTMENT		CONNECTION	SAMI F
DEPARTMENT		AREA	012
DATE	04.12.94	TAG NO.	P.O.NO: HD-037-5003-09
DATE	04.12.94	DOC CODE	83-ER109
DATE	04.12.94	DRWG NO	EA
DATE	04.12.94	FILE	1174 BM4EL 11/300
DATE	04.12.94	FILE	11300.DWG

ABB Industri AS

Div. Anlegg og Produkter Bergen

DEPARTMENT: INK

DEPARTMENT: Dyrgehold

ISSUED FOR APPROVAL
 ISSUED FOR APPROVAL