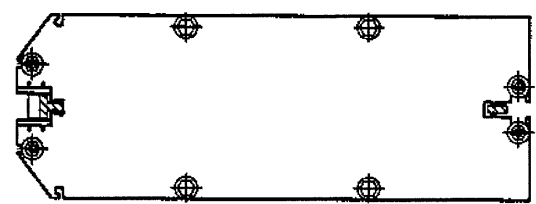
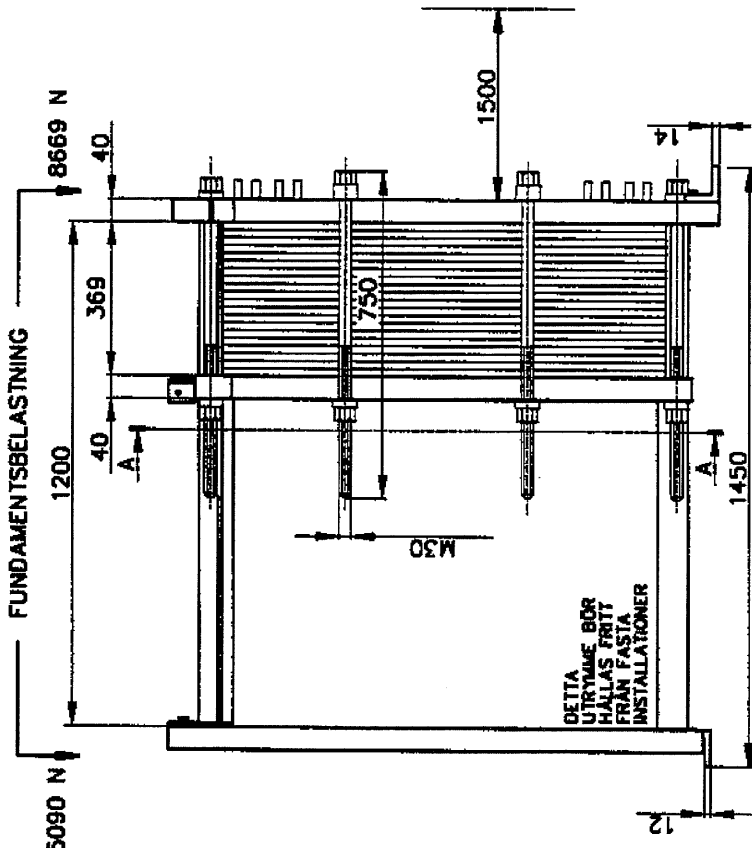


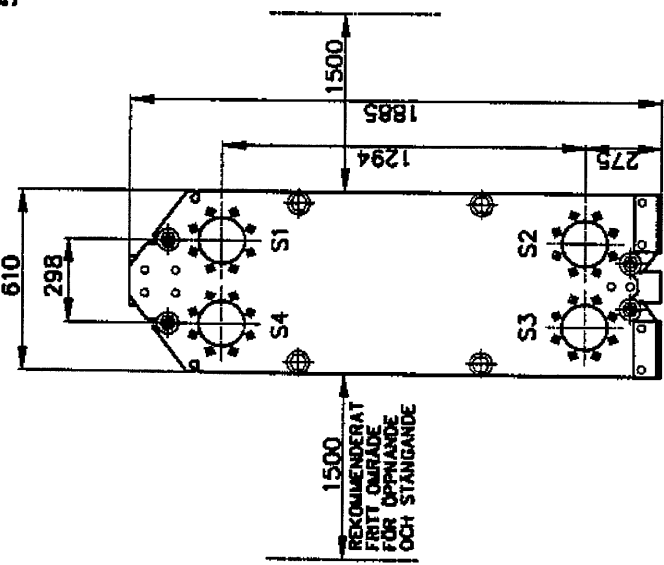
TRYCKPLATTA
(RÖRLIG)
snitt A-A



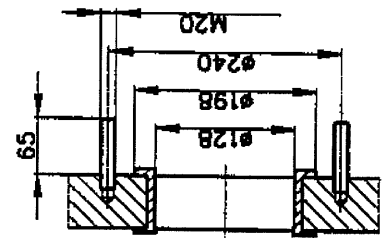
OBS! PLATTOR MED PÅCKNINGARNA VÄNDA MOT STATIVPLATTAN



STATIVPLATTA
(FAST)



ANSLUTNINGSTANDARD
DIN 2501 PN10
Gummifoder
NBR: S1,S2,S3,S4



DN	PN	DIN
S1/S2	150	10 2501
S4/S3	150	10 2501

NITRILE CLIP-ON
TI
0.50 mm
73.78 m²
1*60 L/1*60 L

Packning
Plattmaterial
Plattjocklek
Värmeyta
Koppling

ANMÄRKNINGAR
SIDA A/B
Provtryck
Arbetstryck
Max Temperatur
Nettovikt

Sida	Media	Inlopp	Temp.	Utlopp	Temp.	Fibde	Tryckfall	Vätskevolym
A	Water	S1	70.0 °C	S2	38.0 °C	250000 kg/h	100.0 kPa	93.0 l
B	NaCl	S4	5.0 °C	S3	34.6 °C	270000 kg/h	100.0 kPa	93.0 l

LEV. TI-SU	REF. T655219	TO NR. 655219
AGENT / REF. ALFA LAVAL AS OSLO / ALVP 800.003/95		
FÖRBEREDD IA		

PLATTVÄRMEVÄXLARE
M15-BFM8
SA

Alfa Laval
Alfa Laval Thermal AB
SERIE NR. 30101-21697
DATUM 950421
REV NR. 1