

**BEEBE**  
INTERNATIONAL, INC.

---

**ULTRA-LO**  
**MANUAL CHAIN HOIST**  
**OPERATION & MAINTENANCE MANUAL**  
**FOR**

MODEL NO. ULB - 250  
SERIAL NO. \_\_\_\_\_  
B/M NO. M12500-E  
P.O. NO. \_\_\_\_\_  
DATE ISSUED 10/29/86

**BEFORE USING THIS PRODUCT**  
**READ**  
**WARNING LABELS**  
**AND**  
**OPERATING INSTRUCTIONS**

---

BEEBE INTERNATIONAL, INC  
2724 SIXTH AVENUE SOUTH, SEATTLE, WASHINGTON 98134  
PHONE (206) 624-0466, TELEX: 328795, P.O. BOX 24046

**WARNING**

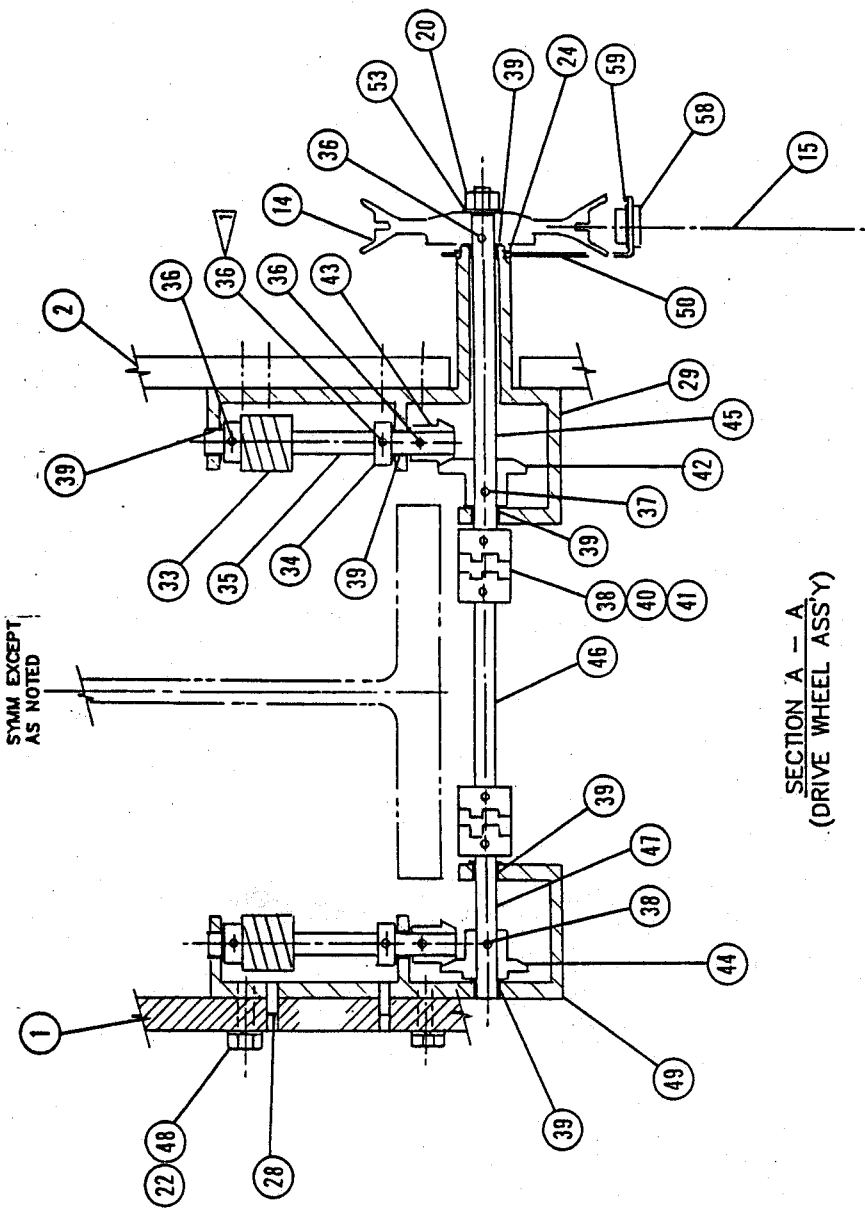
**TROLLEY INSTALLATION**

The trolley has been designed and built for installation by sliding the trolley on the end of the support beam and does not require disassembly of the trolley hoist.

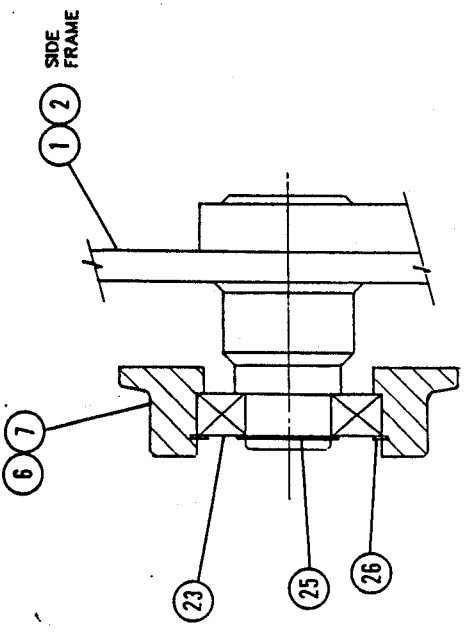
If vertical installation is required, please contact Beebe International, Inc. in Seattle before this type of Installation is performed.

Failure to do so could cause the trolley drive gear assembly to disengage, enabling the parts to fall free from the trolley and may present a hazard to persons and or equipment.

SYMM EXCEPT AS NOTED



SECTION A - A  
(DRIVE WHEEL ASS'Y)

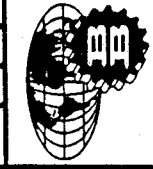


SECTION B - B  
(IDLER & DRIVE WHEEL ASS'Y)

NOTES

- 1. SLIDE COLLAR (34) AGAINST BUSHING TO ELIMINATE ENDPLAY OF (35) SHAFT (.000 TO .005 END PLAY DESIRABLE)
- 2. DRILL 1/4" FOR (36) PIN

MATL.	B/A # M12500	FRAC. #	Ltr.	Date	Revision
		TOL DEC. ± .012"			
		ANG. ± 1/2°			
		Dwn. DEF			
		Chk'd. <i>RAS</i>			
		Date 10-28-86			
		Scale			

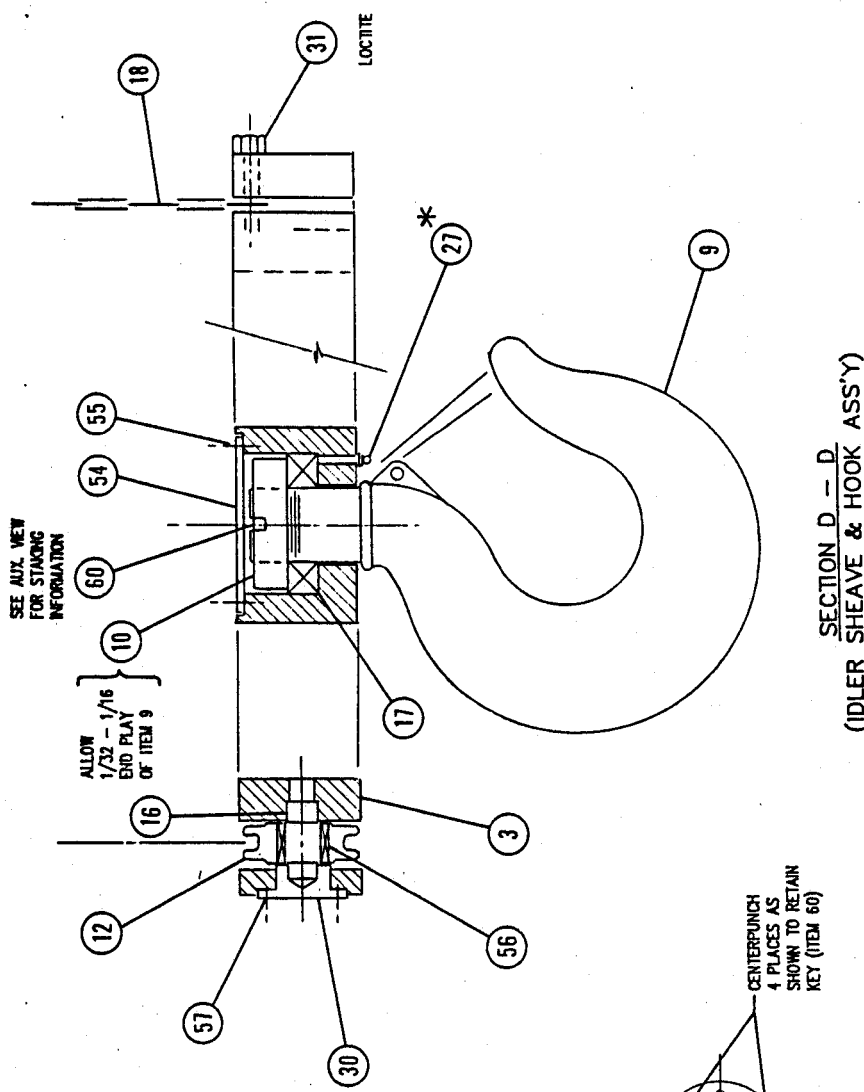


HOIST-ULTRA LOW  
ULB-250

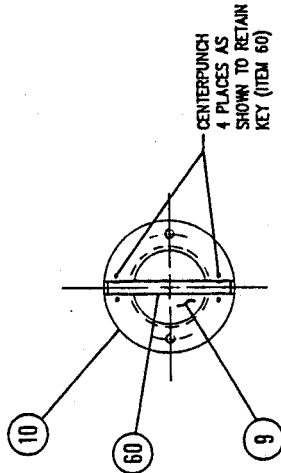
BEEBE INTERNATIONAL, INC. SEATTLE

DWG NO. SHIT 2 OF 3 REV  
B112638

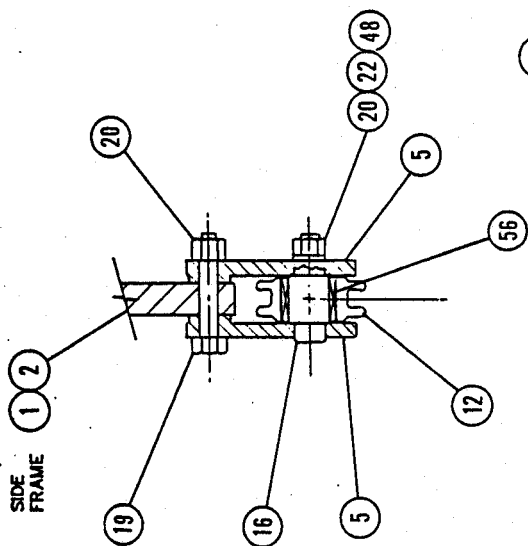
E 86-043



SECTION D - D  
(IDLER SHEAVE & HOOK ASS'Y)



TOP VIEW OF ITEM 9 & 10



SECTION C - C  
(IDLER SHEAVE ASS'Y)

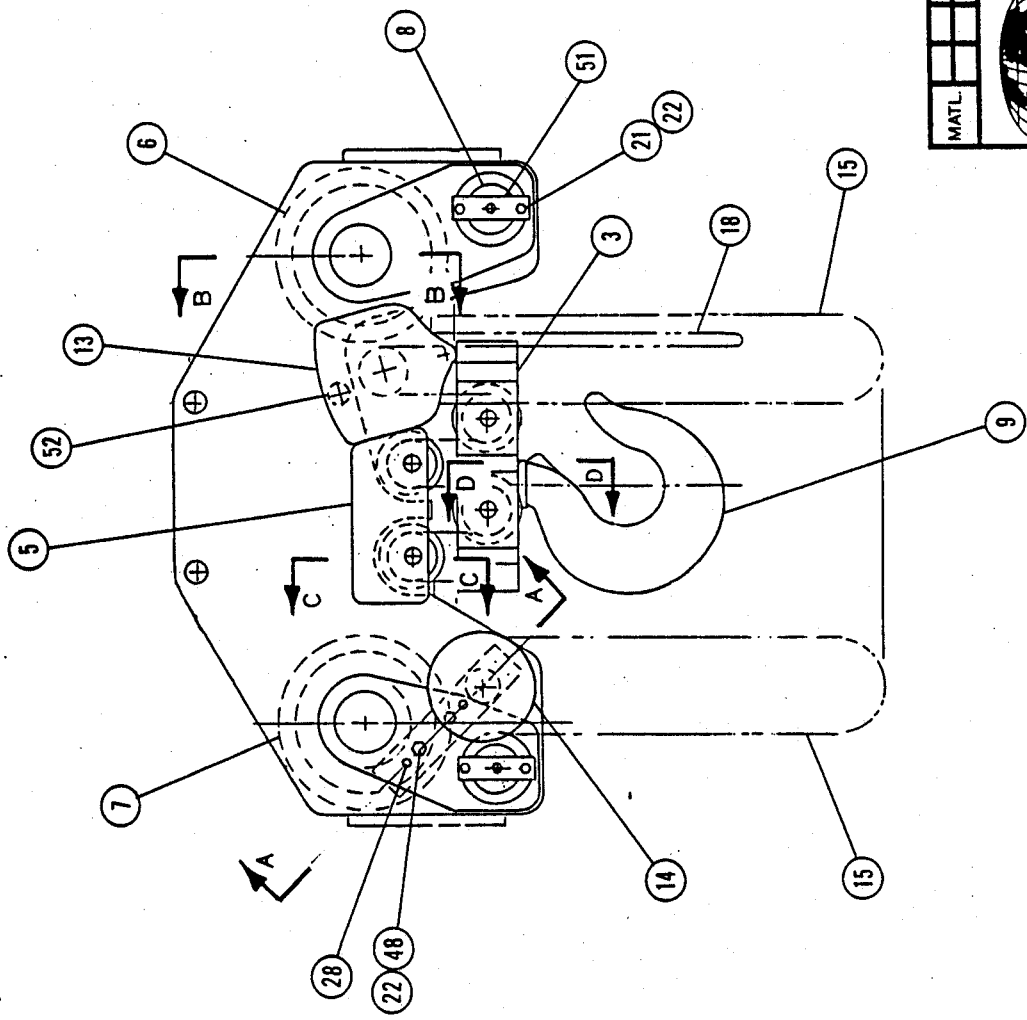
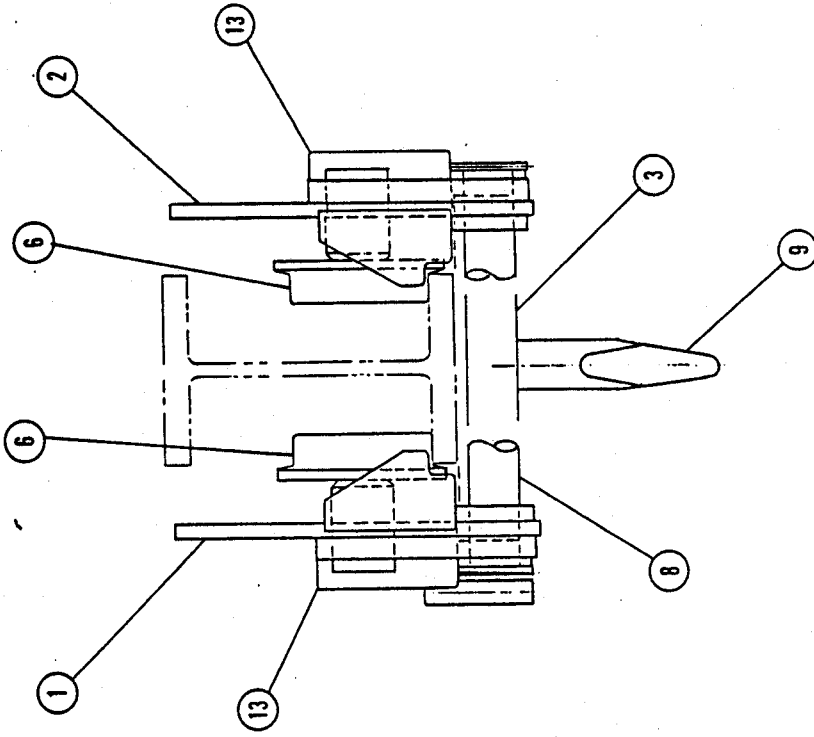
MATL.	B/N # M72500	FRAC. #	DEC. #	ANG. #	1/2"	Ltr.	Date	Revision
		TOL.	DEC.	ANG.	1/2"	Dwn.	DET	
		Ckd.	RAS		Date	10-28-86		
				Scale				

E 86-043

**HOIST-ULTRA LOW  
ULB-250**

**BEEBE INTERNATIONAL, INC.** SEATTLE

DWG. NO. SHI 3 OF 3 REV  
**B1126138**



MATL	B/M / M12500	Rev.	
	FRAC. ±	Ltr.	Date
	TOL. DEC. ± 1/2"		
	Dwn. DEF		
	Chd. <i>RAS</i>		
	Date 10-28-86		
	Scale		

E 86-043

**HOIST-ULTRA LOW**  
**ULB-250**

**BEEBE INTERNATIONAL, INC.** SEATTLE

DWG. NO. SHT 1 OF 3 REV  
**B112638**

Item No.	Description	Qty.	Drawing No.	Part No.	Remarks
1	SIDE PLATE	2	G12499		
2	SIDE PLATE				
3	FRAME - HOOK	1	B12501		
4					
5	SIDE PLATE - SHEAVE	4	B12503		
6	WHEEL - PLAIN	2	B402-1		
7	WHEEL - DRIVEN	2	A12504		
8	SHAFT - SUSPENSION	2	A12518		
9	HOOK	1	A12506		
10	NUT	1	A12571		
11					
12	SHEAVE - IDLER	8		2372948	
13	HOIST *	2	A12546	UL025R	
14	HAND WHEEL	1	A12538	2372915	
15	HAND CHAIN				
16	SHAFT - IDLER	8		2372947	
17	BEARING	1		50394	
18	LOAD CHAIN				
19	SCREW - SHOULDER	4			
20	NUT - LOCK	7			
21	SCREW - HH	12			
22	WASHER - LOCK	14			
23	BEARING	4		50439	
24	SNAP RING	2			
25	SNAP RING	4			
26	SNAP RING	4		51045	
27	GREASE FTG	1		50192	
28	DOWEL	4			
29	BRACKET - DRIVE - RH	1	B12507		
30	COVER - SHAFT	4	A12568		

\* LESS HOOKS

**BILL OF MATERIAL**



Assy. Dwg. No.	Ltr.	Date	Revision
B12638	A	9-29-86	Item 51, 52, 42, 44, 20
Dimen. Dwg. No. B12445	B	10/1/86	SEE DCR
	C	10-16-86	PC 30, 13, 12, 11, 57
Dwn. SVL #	D	10-16-86	PC 23, 28, 29
Ckd. RAS	E	10-28-86	PC 32, 27, 28, 32, 36 28, 50, 50, 50
Date 9-19-86			

HOIST - CHAIN  
ULB - 250

PAGE 1

**BEEBE INTERNATIONAL, INC.**

EB6-043  
SEATTLE

DWG. NO.  
M12500

REV  
E

