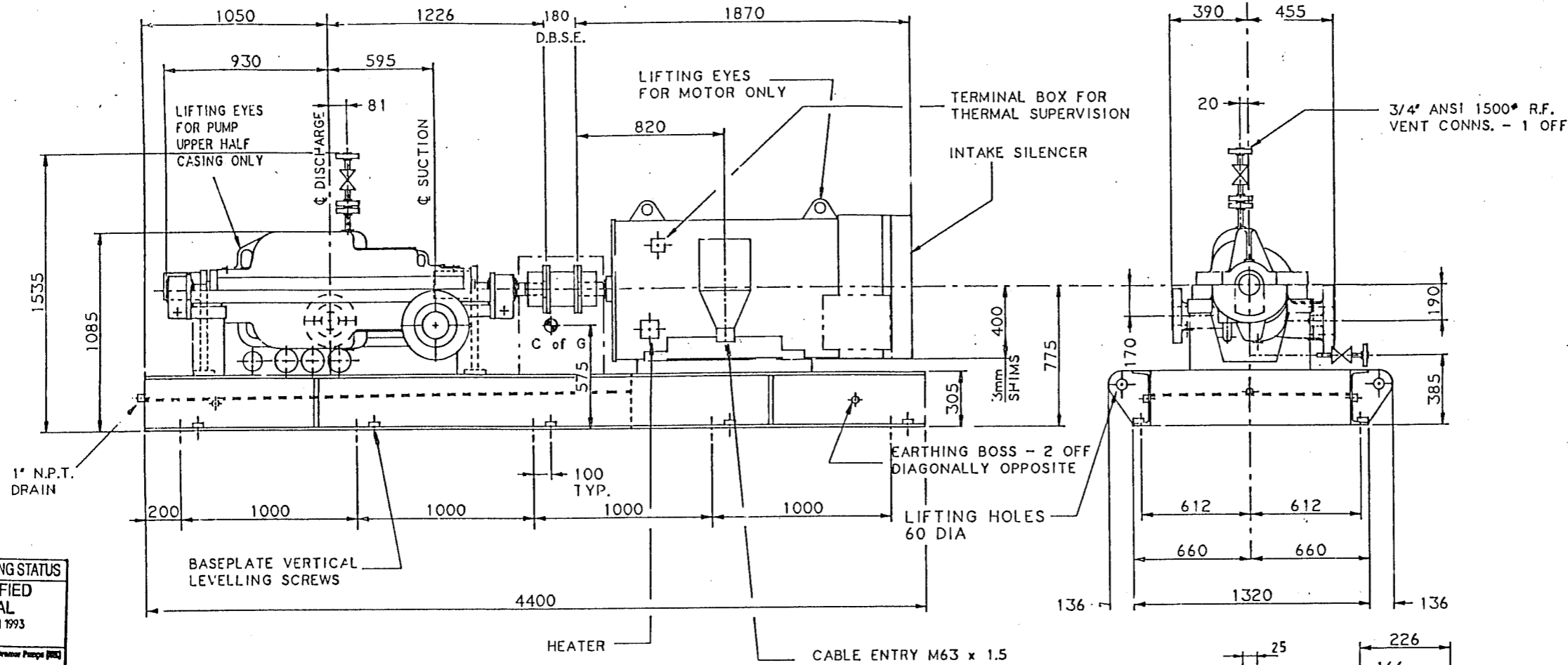
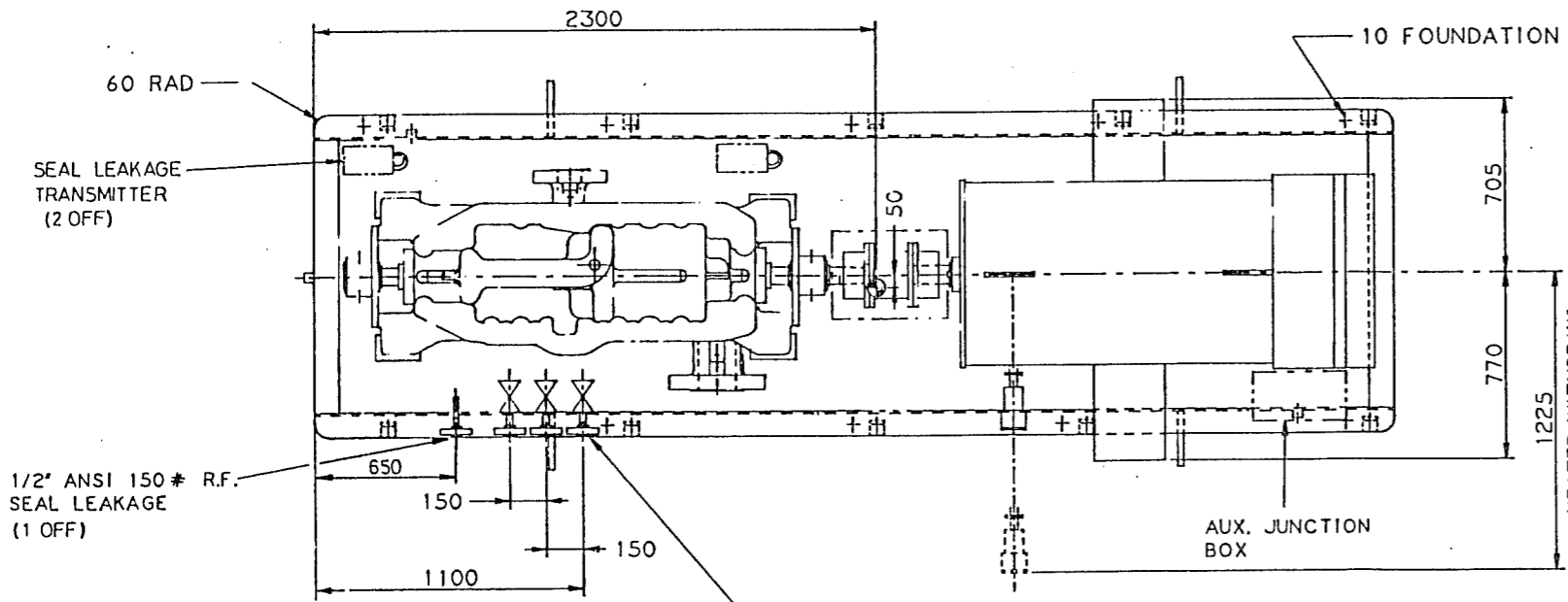


ALL DIMENSIONS IN MILLIMETRES

FIRST ANGLE PROJECTION



I.D.P. DRAWING STATUS
CERTIFIED FINAL
 17 JUN 1993



NOTE
 HORIZONTAL MOTOR ALIGNMENT SCREWS PROVIDED
 ALLOW ± 6mm FOR VARIATION OF NOZZLE FLANGE FACES AND ALL OTHER NOMINAL DIMENSIONS UNLESS OTHERWISE SPECIFICALLY TOLERANCED.

elf aquitaine Norge a/s (Frigg Area Development)		Project Name:
Package title	CONDENSATE EXPORT PUMPS	Space reserved for document status label
P.O.No.	FF-21-26-0005	
Tag No(s) / Description	CP501 A/B GENERAL ARRANGEMENT	
SD Code:	6-8 + 6-9 + 6-1	
Drawing No.	FF 2126 56 8004	System Area 004F 1 of 5

REFERENCE DRAWINGS		WEIGHTS	
SECTIONAL ARRANGEMENT		UNIT WEIGHTS KG	MAINTENANCE WEIGHTS KG
SECTIONAL ARRANGEMENT	2105049 - B	PUMP	1535
MECHANICAL SEAL	2105049 - C	BASEPLATE	1800
SEAL HARNESS PLAN 11	2105049 - D	DRIVER	1950
SEAL LEAKAGE	2105049 - D1	ACCESSORIES	115
VENT & DRAIN HARNESS	2105049 - F	TOTAL (AS BUILT)	5100
MOTOR DRAWING	2105019 - PM	TOTAL (ESTIMATED)	5400

MAIN PUMP DETAILS	
PUMP TYPE	3X10DA-9
NUMBER OF STAGES	9
ROTATION FROM DRIVER	C.C.W.
PUMP SPEED	2950 R.P.M.
DISCHARGE FLANGE	3 INCH ANSI 900° RF.
SUCTION FLANGE	6 INCH ANSI 600° RF.
LUBRICATION	RING OILED/CONSTANT LEVEL OILER
MECHANICAL SEAL	FLEXIBOX
SEAL CODE	TSBOP-RRSM-0670-ASCY
ASSEMBLY DRG.	2105049 - C

COUPLING DETAILS	
MANUFACTURER	METASTREAM
DESIGNATION	TSKS
SIZE	0110
SPACER	180mm
GUARD TO BS. 5304	BRONZE

DRIVER DETAILS	
SUPPLIER	INGERSOLL-RAND GATESHEAD
MANUFACTURER	LOHER
FRAME SIZE	EHSV-400MB-02
DRIVER POWER	200 Kw
DRIVER SPEED	2950 R.P.M.
ELECTRICAL SUPPLY	5500 VOLTS 3 PH-SE 50 CYCLES
ENCLOSURE	EE**

FLANGE DETAILS	
	DISCH. SUCT.
a	241 356
b	190.5 292.1
c	127 216
d	38.1 47.6
e	6.4 6.4
HOLE DIA.	25.4 28.6
HOLE No. OFF	8 12

PUMP NOZZLE LOADINGS		
	DISCHARGE	SUCTION
FX	1068 N	FX = 2491 N
FY	890 N	FY = 2046 N
FZ	1334 N	FZ = 3114 N
FR	1913 N	FR = 4492 N
MX	949 Nm	MX = 2305 Nm
MY	719 Nm	MY = 1763 Nm
MZ	475 Nm	MZ = 1180 Nm
MR	1288 Nm	MR = 3132 Nm

N = NEWTONS Nm = NEWTON/METRES

CUSTOMER ORDER DETAILS	
CUSTOMER	MASKIN K. LUND
CUSTOMER ORDER NO	FF-21-26-0005
CUSTOMER ITEM NO	CP501 A/B
ULTIMATE USER	ELF AOUITAINE
LOCATION	FRIGG FIELD
LIQUID PUMPED	HC CONDENSATE
SERVICE	CONDENSATE EXPORT
PUMP TYPE	3X10DA-9 QUANTITY TWO
REV. DESCRIPTION	004 TOTAL WEIGHT AS BUILT ADDED.
	005 CUST TITLE BLOCK UPDATED
	002 SEAL LEAKAGE TRANSMITTERS REPOSITIONED & MANIFOLDED TO ONE DEPT CONNECTION.
	001 CUSTOMER DETAILS & MOTOR VIEW UPDATED, PIPING CONNECTIONS IDENTIFIED, EARTH STUDS / LIFTING LUG DETAIL / SEAL LEAKAGE DETAIL / CUSTOMER TITLE BLOCK ADDED, WIDTH & HEIGHT CHANGED.
DRAWN	G Blom
DATE	05MY92
CHKD	A. Nelson
APP'D	R. G. ...

INGERSOLL-RAND PUMPS
 PUMP DIVISION
 GATESHEAD ENGLAND
 TITLE: GENERAL ARRANGEMENT
 SCALE: NONE
 DRG NO.: 2105049 - A
 REV. 004