

4750 BONNETS OPENED

3730 BONNETS CLOSED

φ 1575

18 3/4" API 5000 BX 163
STUDED OUTLET (2" STUDS)

⑤
TYPE "D" BOP

FOUR LIFTING LUGS
(SHOWN 45° OUT OF LOCATION)

OPEN AND CLOSE
PORTS:
1 1/2" 11 1/2 NPT

HYD. TENSIONED BONNET STUDS PORT
1/4" H.P. MALE AUTOCLAVE QUICK
DISCONNECT (6 PLACES)

④ TYPE "UI" BOP, DBL.

1" 11 1/2 NPT OPEN PORTS: THIS SIDE
(6 PLACES) CLOSE PORTS: OPPOSITE SIDE

③ TYPE "UI" BOP, SGL.

THREE CLAMPS # 27
18 3/4" CIW 10000 BX 164

TOTAL NET WEIGHT : 56,94 TONS

(ANNULAR: 14,02^T + DBL TYPE U 24,53^T + SGL TYPE U : 12,49^T
+ 18 3/4" CLAMPS : 3,61^T + TEST STUMP AND LANDING BASE: 1,5^T
MISCELLANEOUS: 0,788^T)

BOP STACK ASSY. - 18 3/4" 10K

X-7762

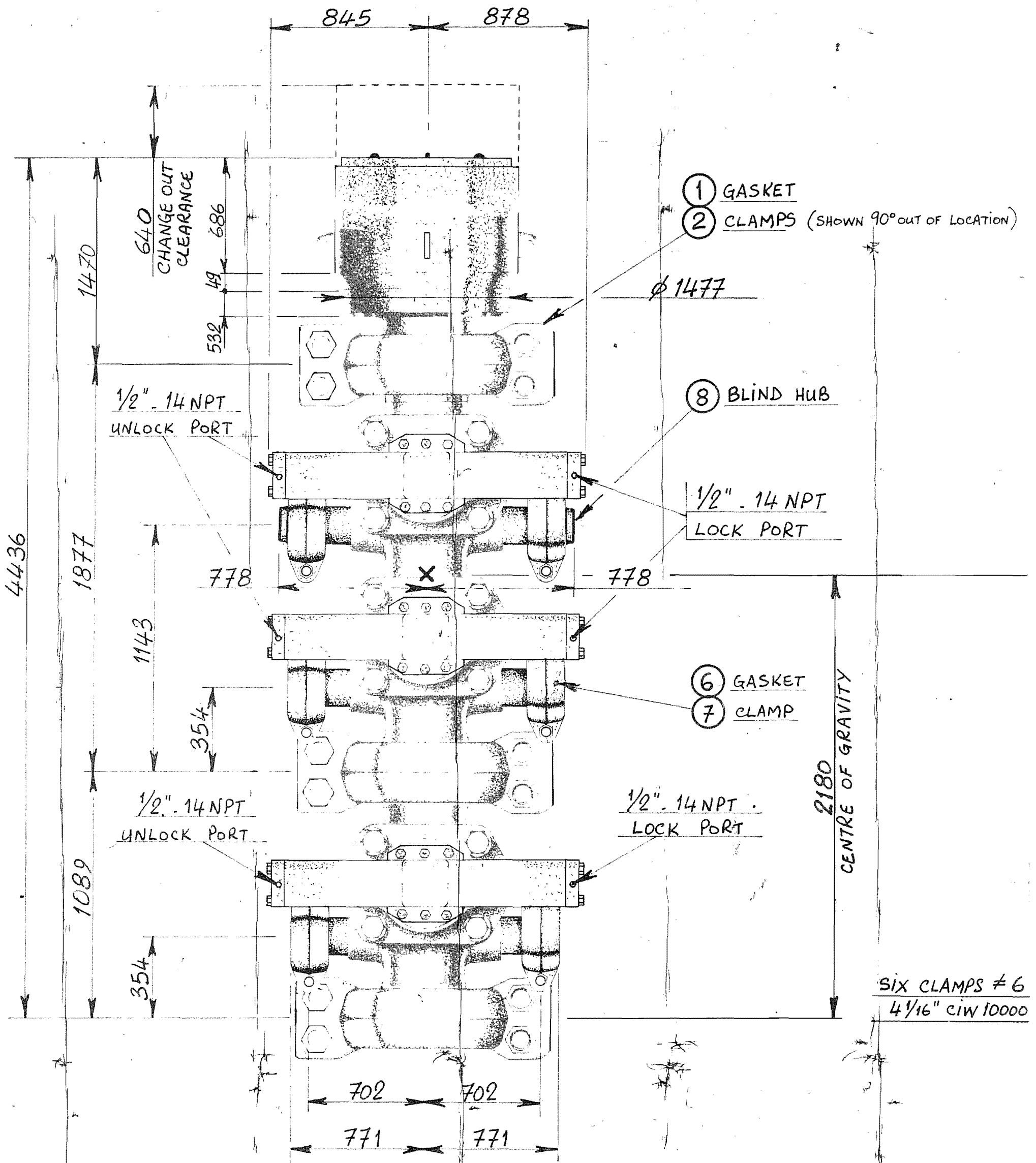
DEVELOPMENT HMP1
REF: BOP STACK 18 3/4" 10K-X7762

REV: 1.00.1.0.0018.01

Rev. Ref.: D005/4/5
A. B. C. E. F. G. Q. R. BF. JA. JC
L. V. BT. M

Cameron	MR	A1	C1 22.12.82	D2 16.9.83	SK 32015.04
	30.9.82	B1 19.10.82	C2 8.3.83	D1 21.4.83	

T REC



FLUID REQUIREMENTS:

18 3/4" 5K TYPE "D": 36 Gal. to close
29 Gal. to open

18 3/4" 10K TYPE "UII": 35 Gal. to close one set of rams
32 Gal. to open one set of rams
5,3 Gal. to open one wedge lock
0,7 Gal. to close one wedge lock

ACCEPTED AS CERTIFIED
ACCEPTANCE DOES NOT RELIEVE
VENDOR OF HIS CONTRACTUAL
OBLIGATION
BY *J. Arlene* Date 10.2.83
elf aquitaine norge as

SIX CLAMPS ≠ 6
4 1/16" CIW 10000

Title : PEI
Equipment :
Purchase :
Vendor Code :
FDRB Code :