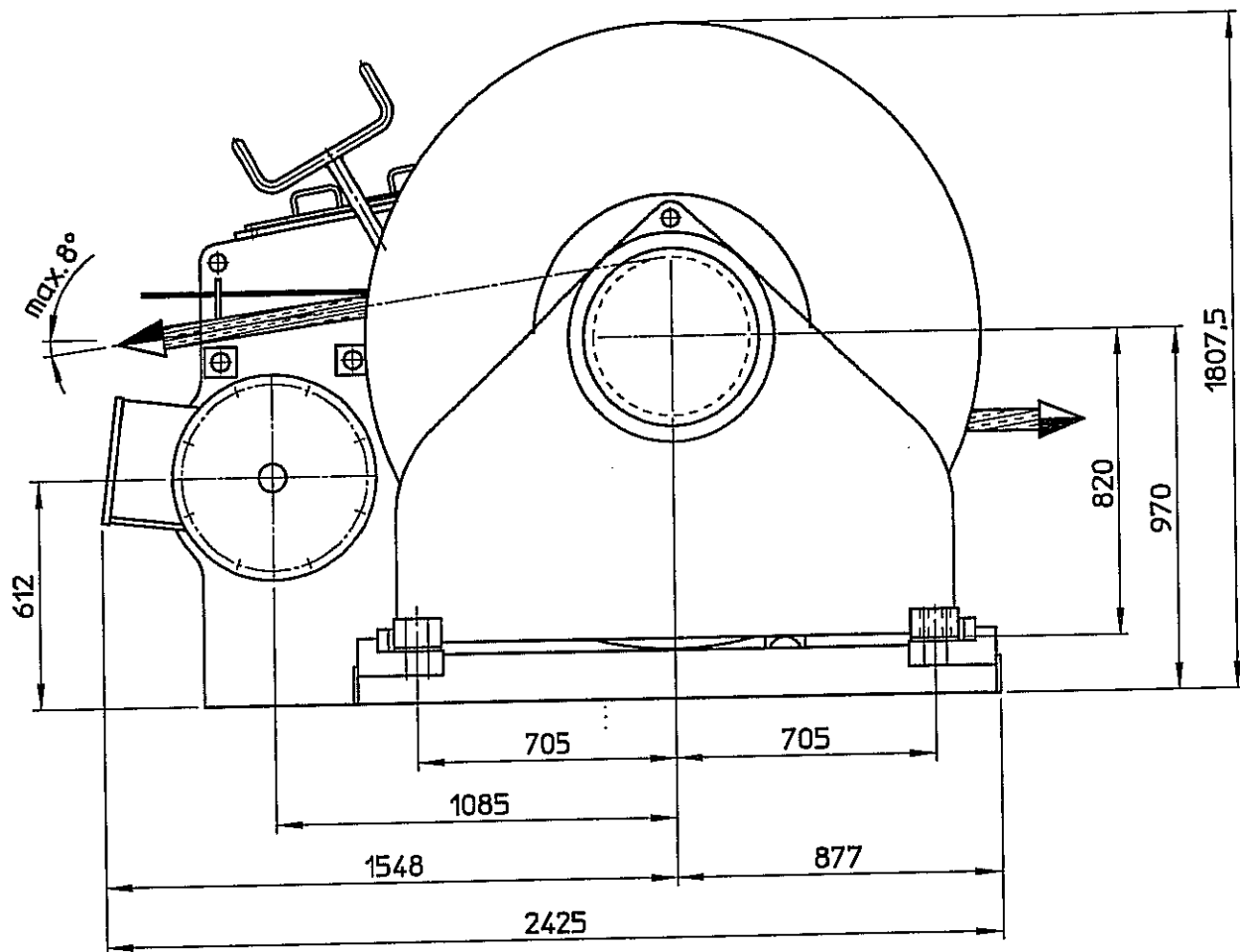


Ø56 ASTRA - 8 strength

REV	DESCRIPTION	DATE	DRN	CHK
B	SB becomes PS	16-06-06	B.D.	
A	More definitive dimensions	09-06-06	B.D.	

EL. MOOR. WINCH Type EM034/2S-2 On top of tower



ø56 ASTRA - 8 strength

REV	DESCRIPTION	DATE	DRN	CHK
B	SB becomes PS	16-06-06	B.D.	
A	More definitive dimensions	09-06-06	B.D.	

EL. MOOR. WINCH Type EM034/2S-2 On top of tower

Dat: 26-04-2006
Scale: 1/20 B.D.-St.S

BRUSSELLE MARINE INDUSTRIES N.V.
Nieuwpoort Belgie

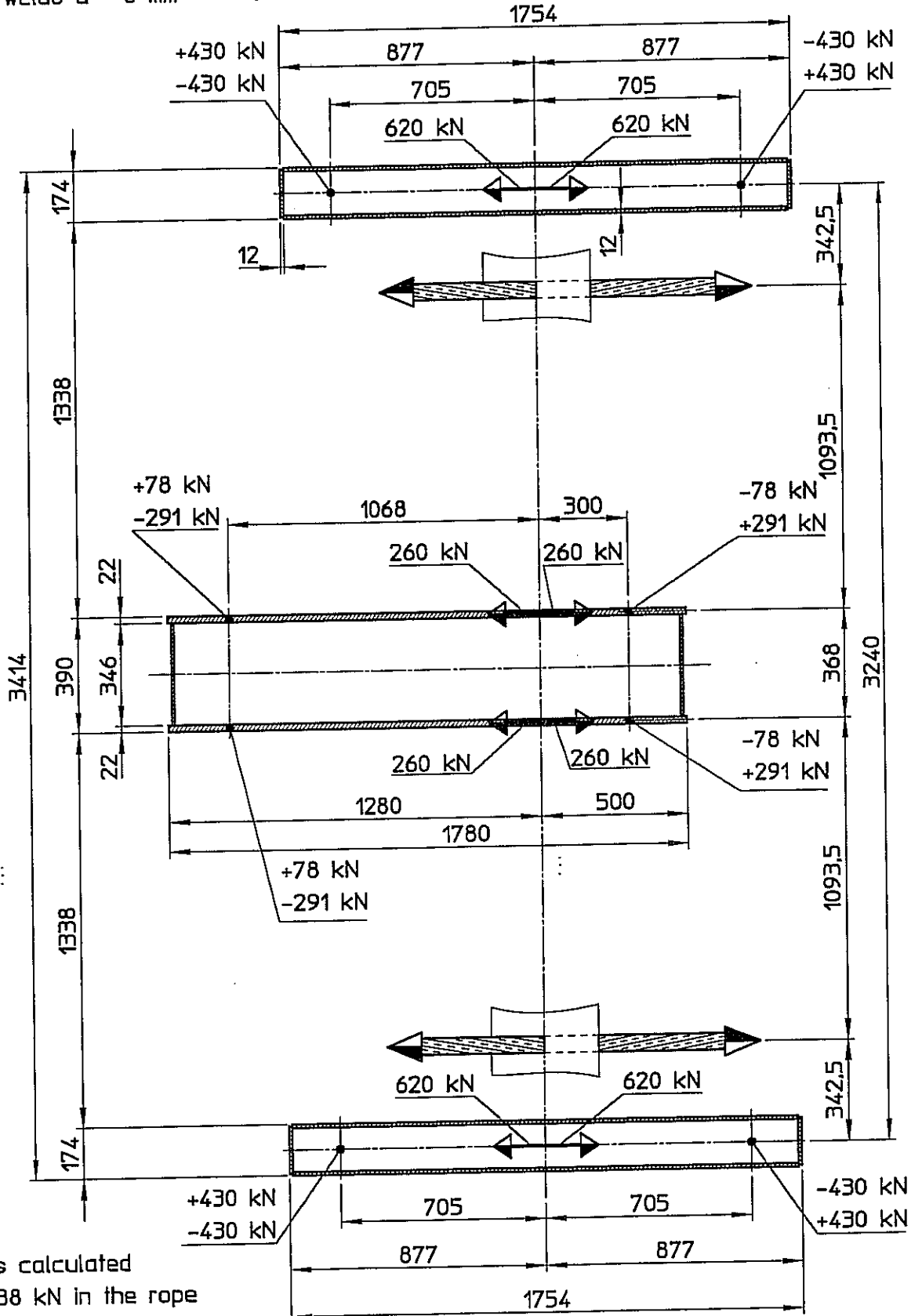
25654PS

Page 2
3 pages

All welds a = 6 mm

FOOTPRINT

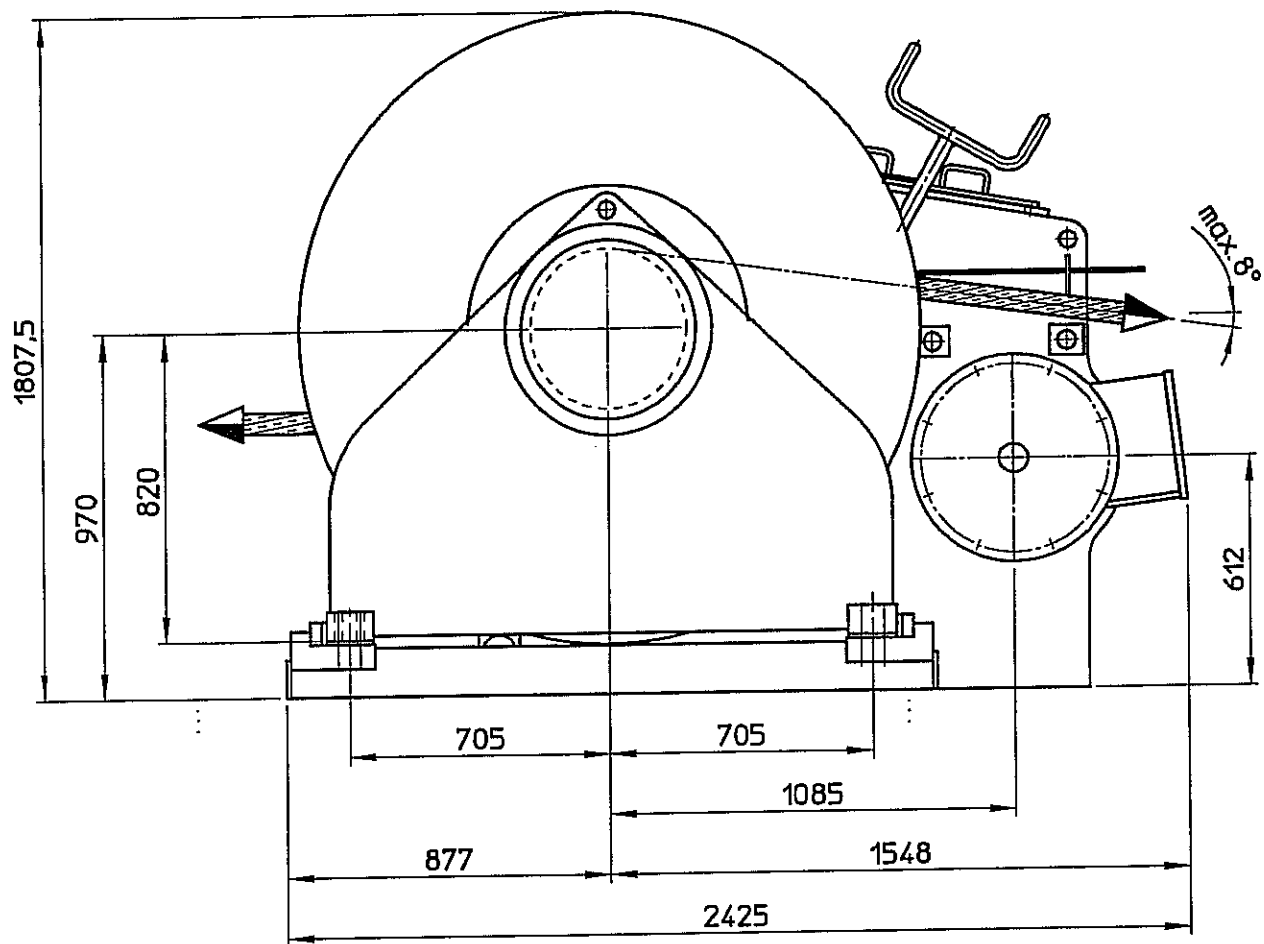
Ø56 ASTRA - 8 strength



Forces calculated
with 688 kN in the rope
+ = Pull - = Push

REV	DESCRIPTION	DATE	DRN	CHK
B	SB becomes PS	16-06-06	B.D.	
A	More definitive dimensions	09-06-06	B.D.	

EL. MOOR. WINCH Type EM034/2S-2 On top of tower



ø56 ASTRA - 8 strength

REV	DESCRIPTION	DATE	DRN	CHK
B	PS becomes SB	16-06-06	B.D.	
A	More definitive dimensions	09-06-06	B.D.	

EL. MOOR. WINCH Type EM034/2S-2 On top of tower

Dat: 26-04-2006
Scale: 1/20 B.D.-St.S

BRUSSELLE MARINE INDUSTRIES N.V.
Nieuwpoort België

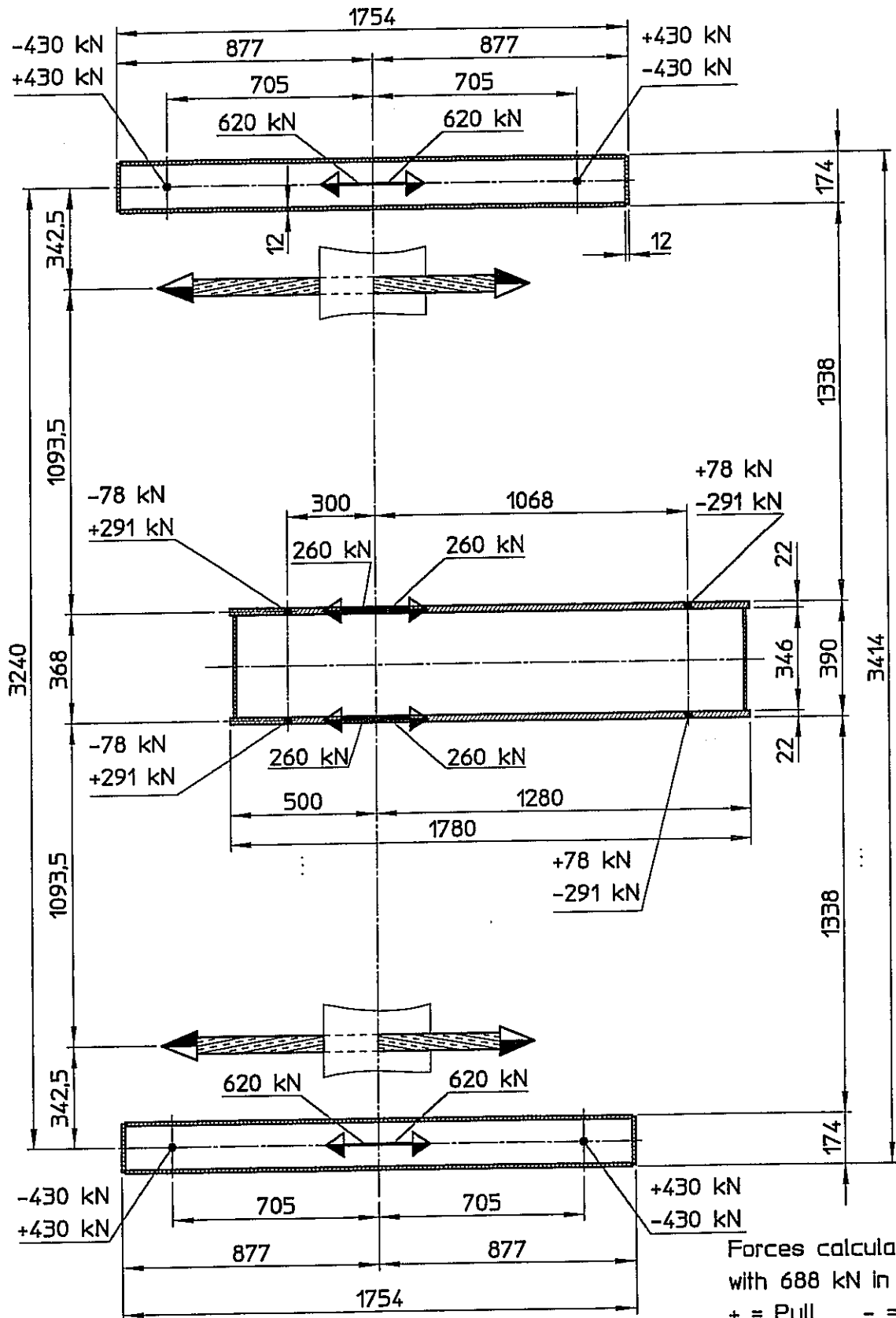
25654SB

Page 2
3 pages

All welds $a = 6 \text{ mm}$

FOOTPRINT

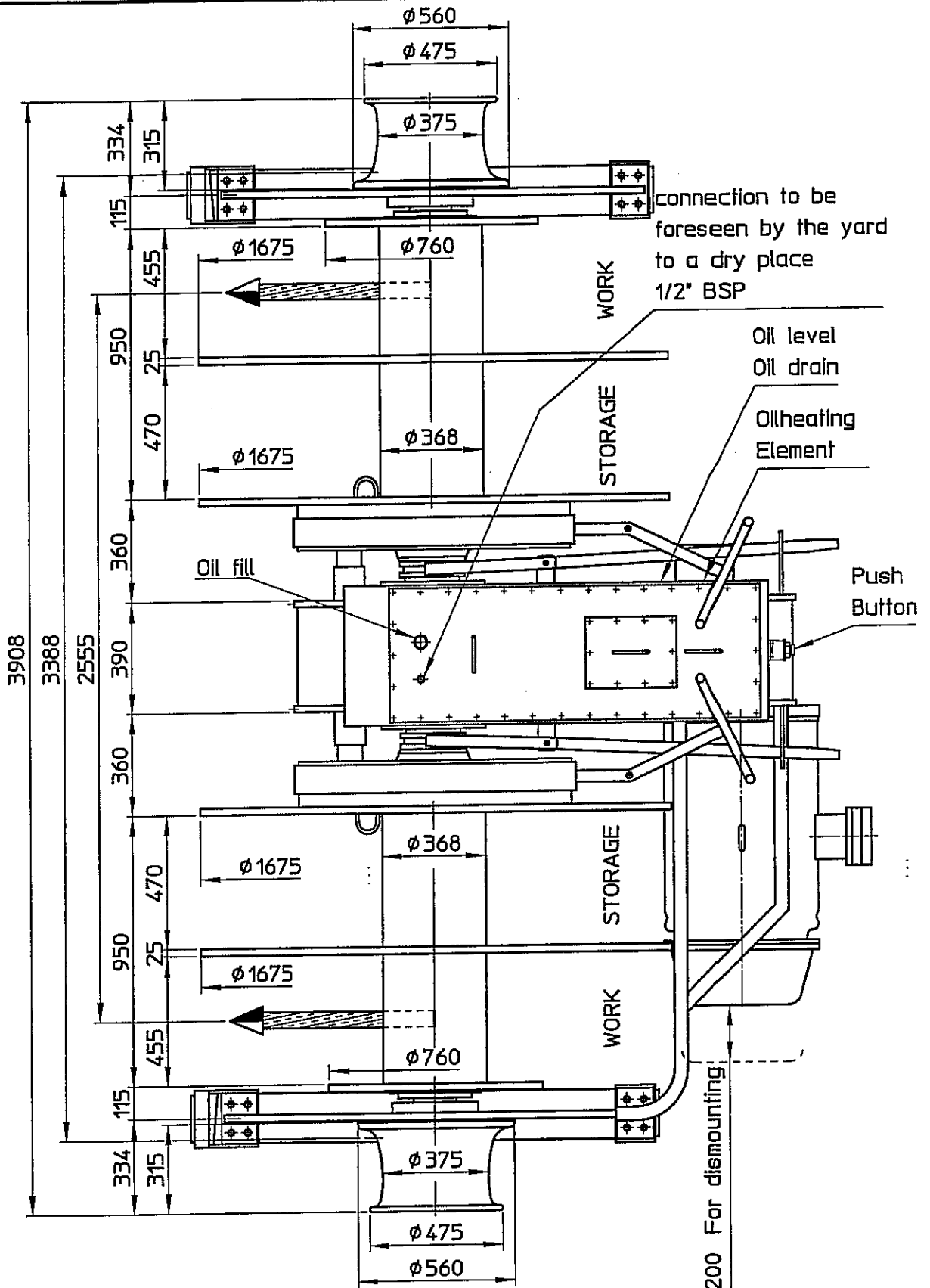
$\phi 56 \text{ ASTRA} - 8 \text{ strength}$



Forces calculated with 688 kN in the rope
 + = Pull - = Push

REV	DESCRIPTION	DATE	DRN	CHK
B	PS becomes SB	16-06-06	B.D.	
A	More definitive dimensions	09-06-06	B.D.	

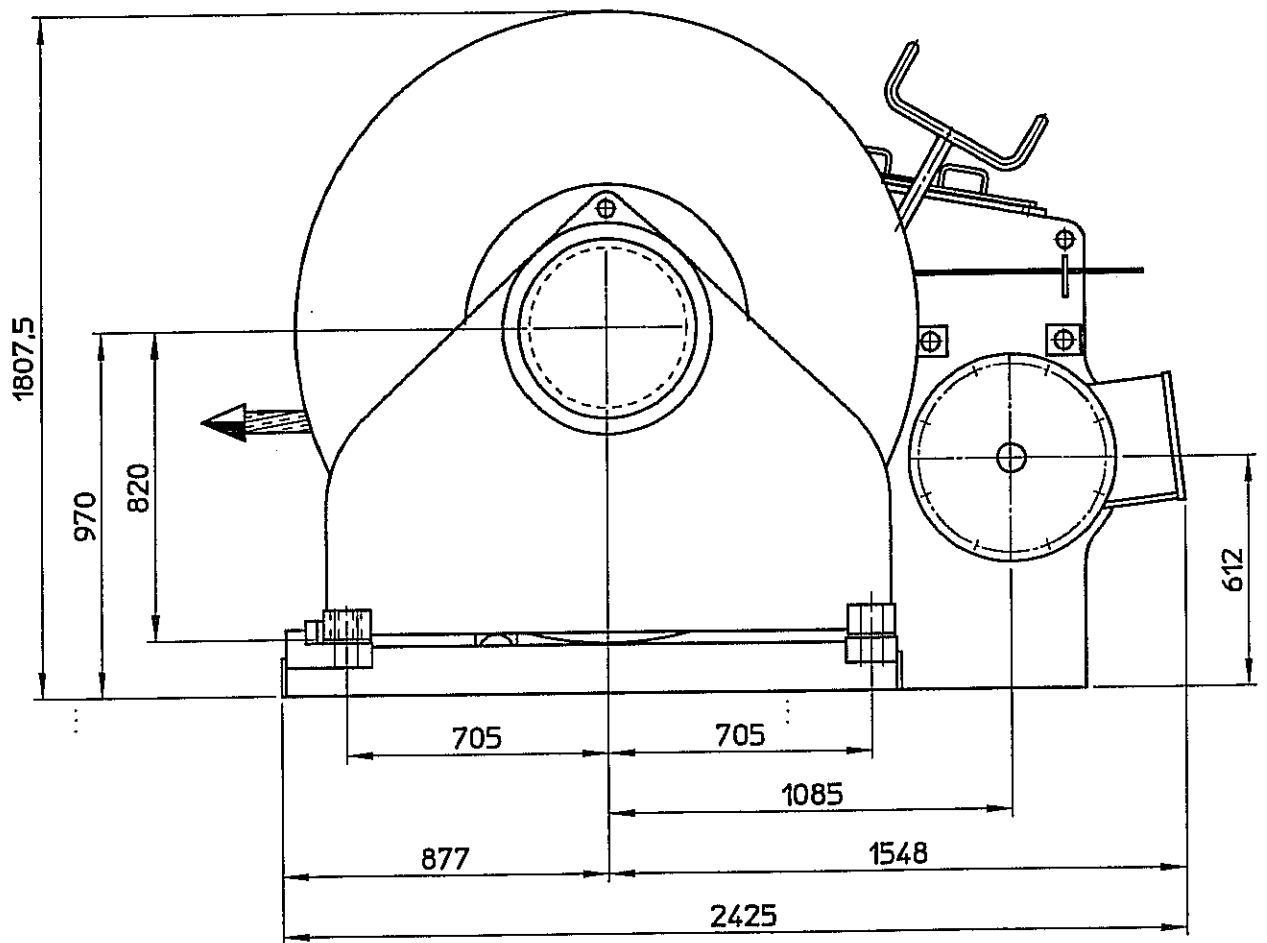
EL. MOOR. WINCH Type EM034/2S-2 On top of tower



φ56 ASTRA - 8 strength

REV	DESCRIPTION	DATE	DRN	CHK
B	More definitive dimensions	16-06-06	B.D.	
A	More definitive dimensions	09-06-06	B.D.	

EL. MOOR. WINCH Type EM034/2S-2 Fore ship



ø56 ASTRA - 8 strength

REV	DESCRIPTION	DATE	DRN	CHK
B	More definitive dimensions	19-06-06	B.D.	
A	More definitive dimensions	09-06-06	B.D.	

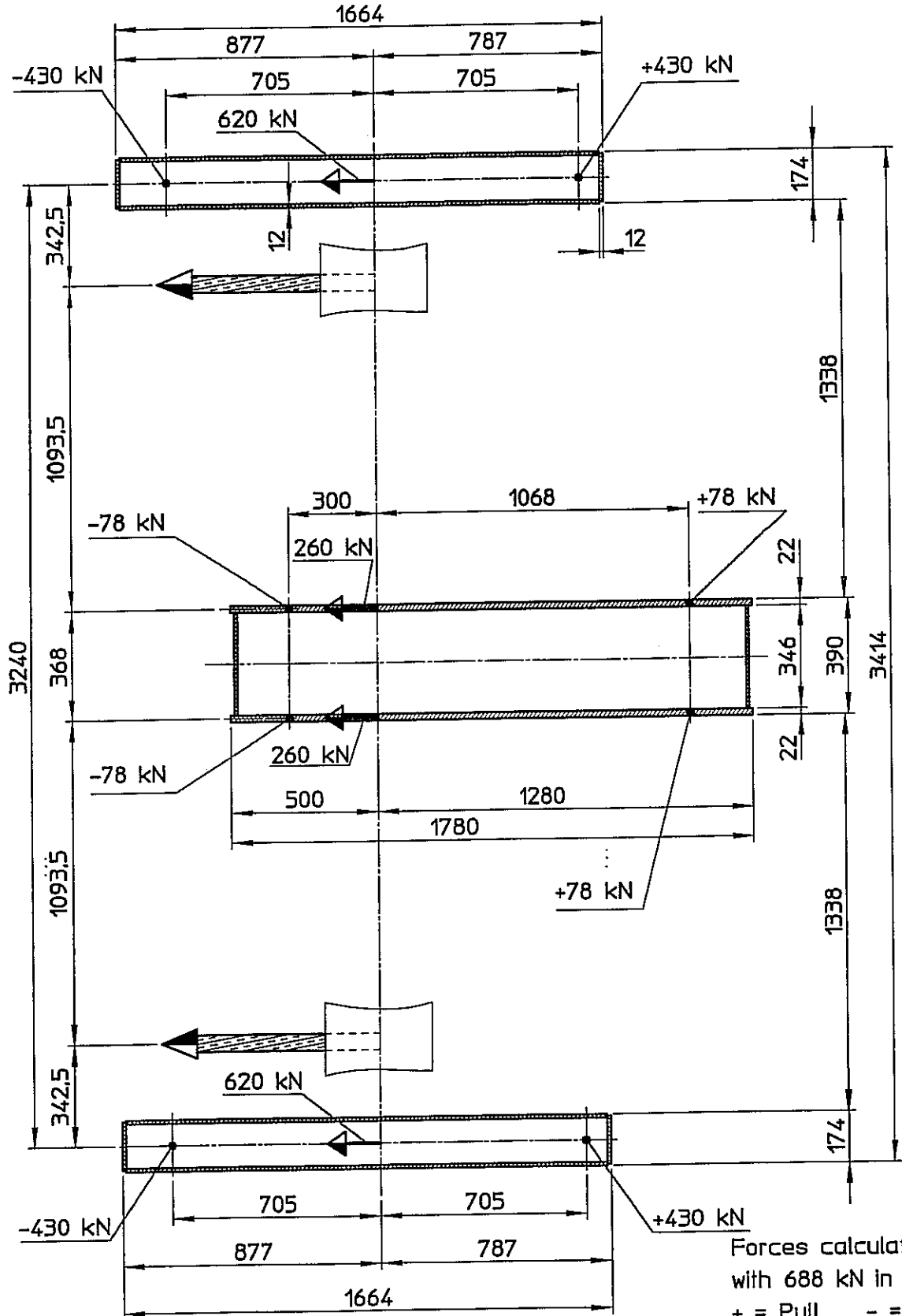
EL. MOOR. WINCH Type EM034/2S-2 Fore ship

Dat: 26-04-2006	BRUSSELLE MARINE INDUSTRIES N.V. Nieuwpoort Belgie	25678PS	Page 2 3 pages
Scale: 1/20 B.D.-St.S			

All welds a = 6 mm

FOOTPRINT

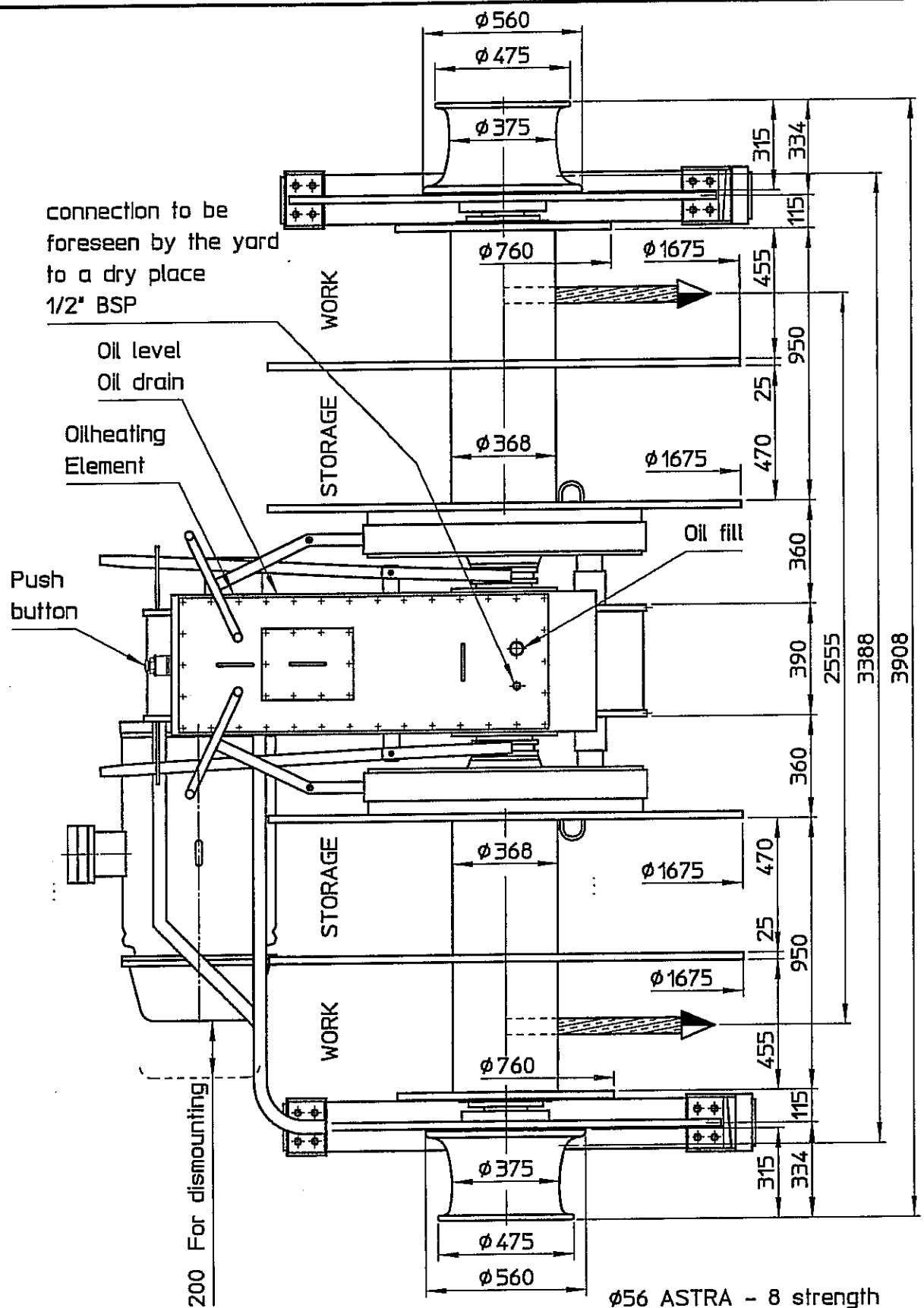
Ø56 ASTRA - 8 strength



Forces calculated with 688 kN in the rope
 + = Pull - = Push

REV	DESCRIPTION	DATE	DRN	CHK
B	More definitive dimensions	19-06-06	B.D.	
A	More definitive dimensions	09-06-06	B.D.	

EL. MOOR. WINCH Type EM034/2S-2 Fore ship



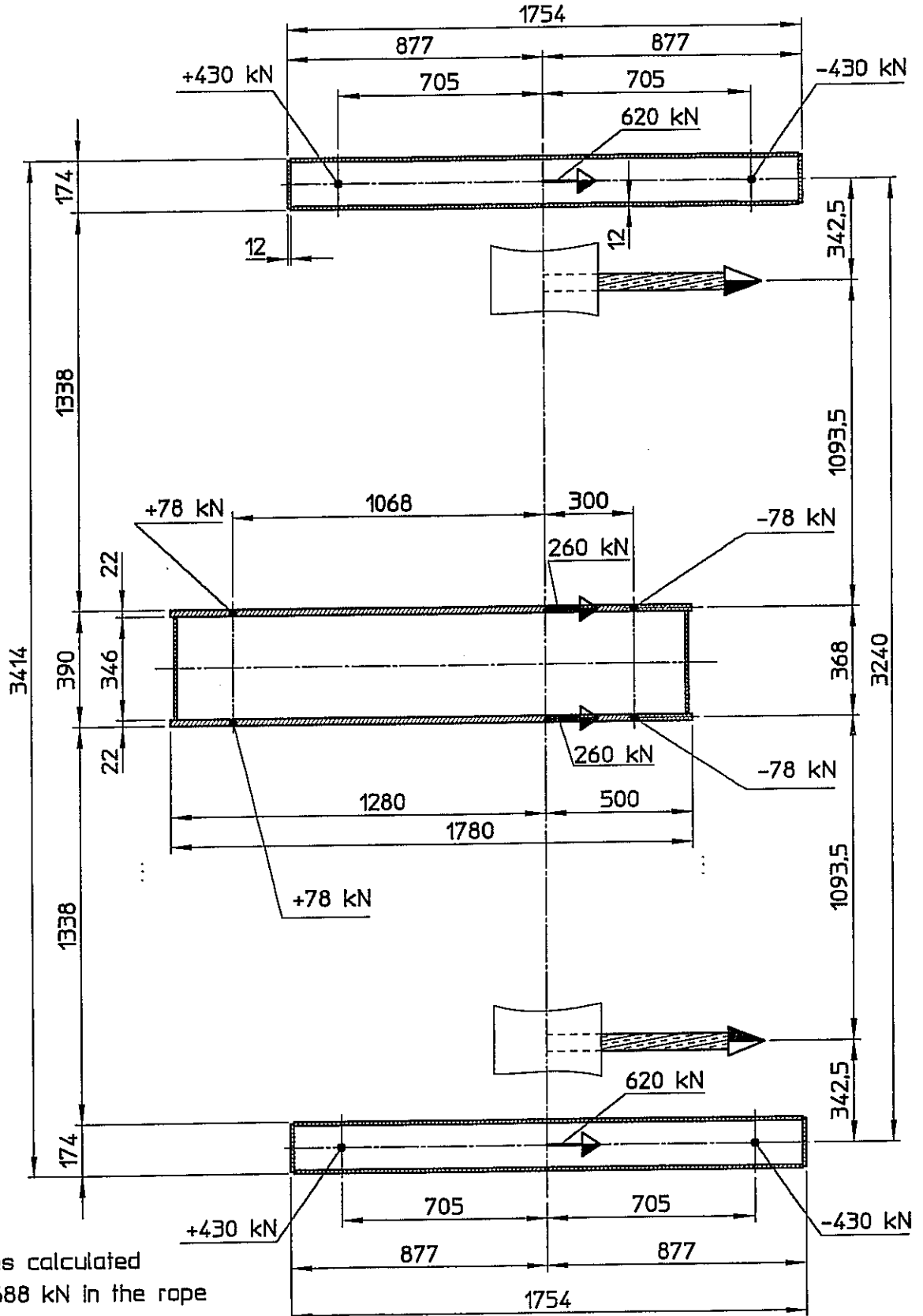
REV	DESCRIPTION	DATE	DRN	CHK
B	More definitive dimensions	19-06-06	B.D.	
A	More definitive dimensions	09-06-06	B.D.	

EL. MOOR. WINCH Type EM034/2S-2 Fore ship

All welds $a = 6 \text{ mm}$

FOOTPRINT

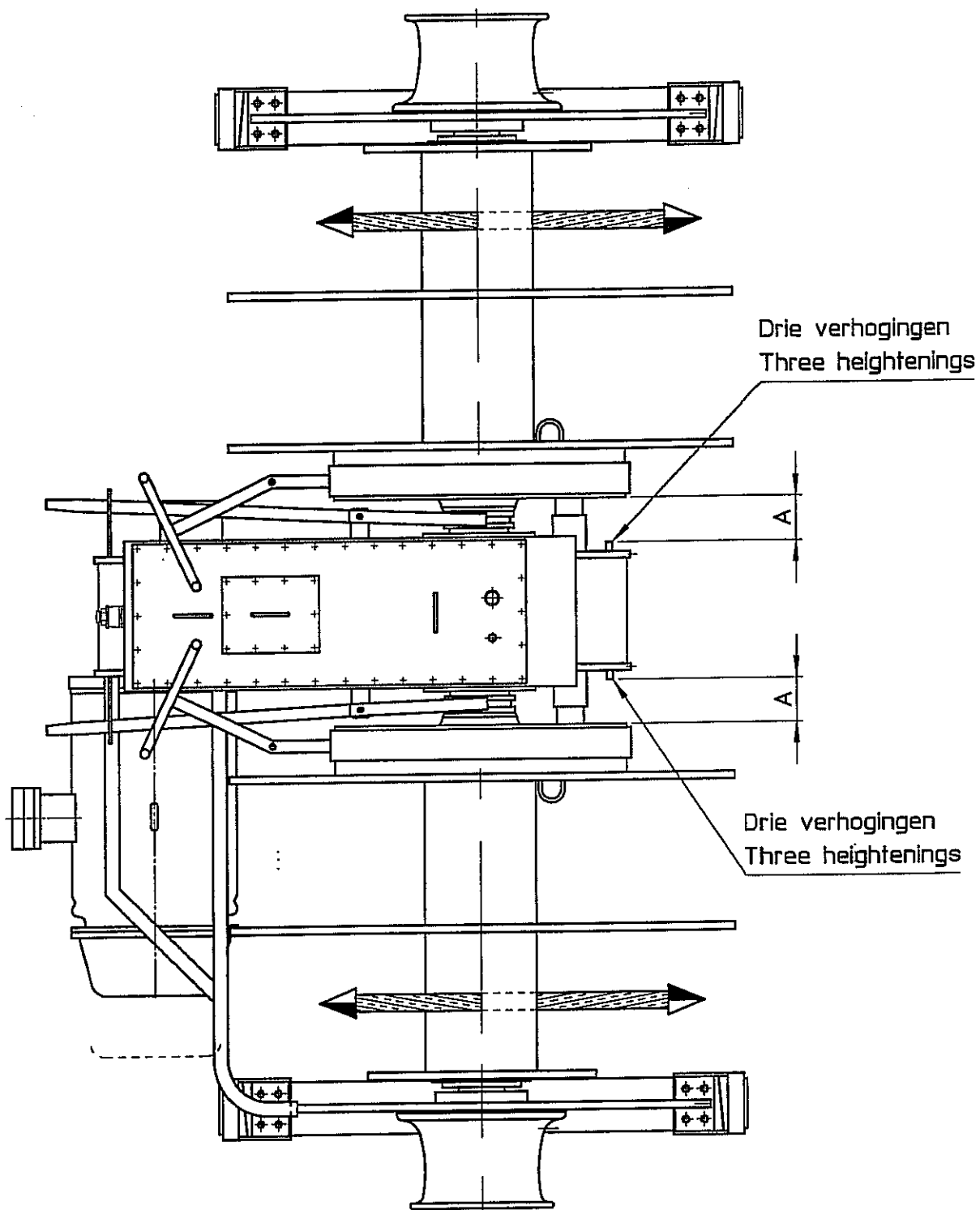
Ø56 ASTRA - 8 strength



Forces calculated
with 688 kN in the rope
+ = Pull - = Push

REV	DESCRIPTION	DATE	DRN	CHK
B	More definitive dimensions	19-06-06	B.D.	
A	More definitive dimensions	09-06-06	B.D.	

EL. MOOR. WINCH Type EM034/2S-2 Fore ship



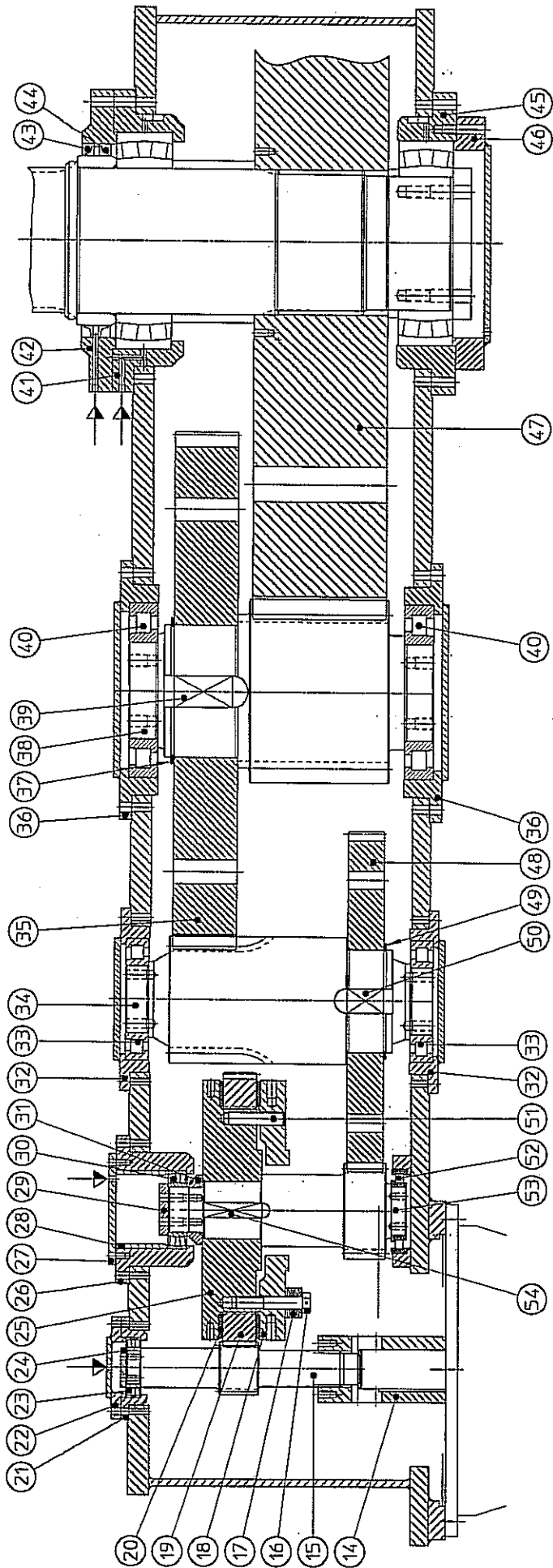
REV	DESCRIPTION	DATE	DRN	CHK

ALIGNMENT OF THE WINCH

Dat: 26-04-2006
Scale: 1/20 B.D

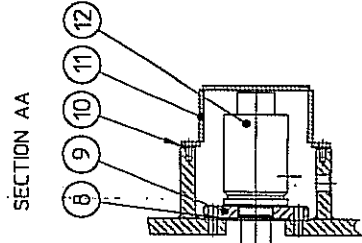
BRUSSELLE MARINE INDUSTRIES N.V.
Nieuwpoort Belgie

25836

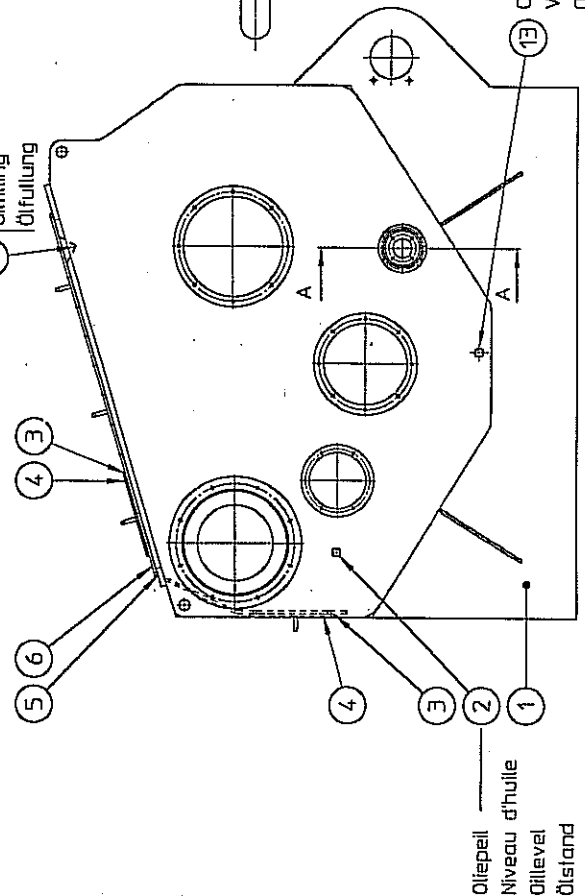


← Smeernippel
 Graisseur
 Grease fitting
 Schmiernippel

-Bij bestelling van een wisselstuk, het machine -
 stuk - en plannummer opgeven.
 -En cas de commande des pièces de rechange, donnez
 le numéro de la machine, de la pièce et de ce plan.
 -To ask for spare parts, the machine - the part - and
 the drawing number must be mentioned.
 -Für Auftrag Ersatzteile, die Maschinen, Teil - und
 Zeichnungsnummer melden.



Olievulling
 Remplissage d'huile
 Oilfilling
 Ölfüllung



Oliepil
 Niveau d'huile
 Oillevel
 Ölstand

Oliefloot
 Vidange d'huile
 Oildraining
 Öltafel

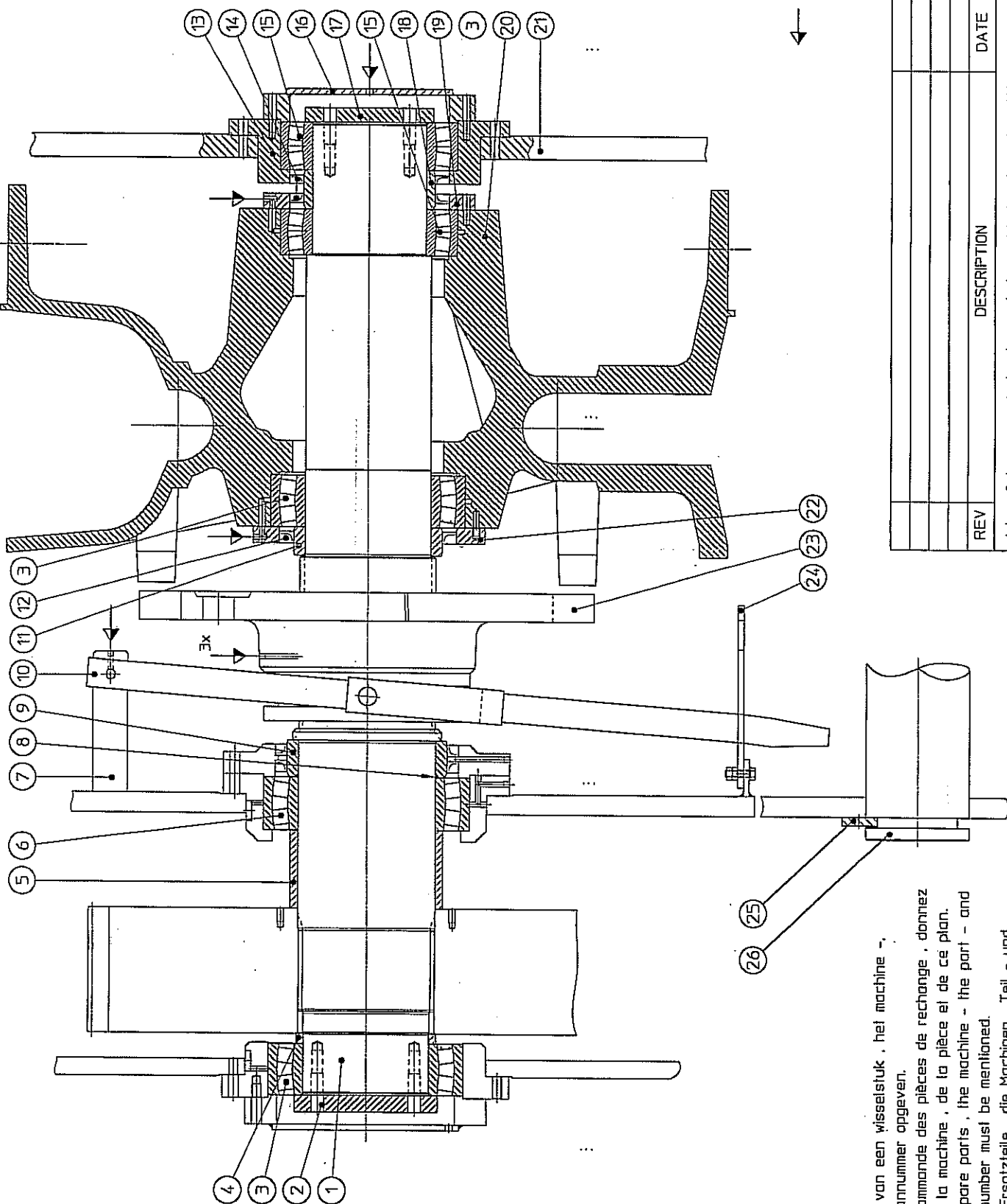
REV	DESCRIPTION	DATE	DRN	CHK

REDUCTIEKAST - GEARBOX

BRUSSELLE MARINE INDUSTRIES N.V.
 Nieuwpaarl België

Dat: 10-01-2007
 B.D.

25821
 A47-10-20-22



← Smeernippel
 Graisseur
 Grease fitting
 Schmiernippel

-Bij bestelling van een wisselstuk , het machine -
 stuk - en plannummer opgeven.
 -En cas de commande des pièces de rechange , donnez
 le numéro de la machine , de la pièce et de ce plan.
 -To ask for spare parts , the machine - the part - and
 the drawing number must be mentioned.
 -Für Auftrag Ersatzteile , die Maschinen , Teil - und
 Zeichnungsnummer melden.

REV	DESCRIPTION	DATE	DRN	CHK

Hoofdas met ketenwiel - Mainshaft with chainwheel

Date: 11-01-2007
 B.D.

BRUSSELLE MARINE INDUSTRIES N.V.
 Nieuwpaart België

25822
 A48-5-31-32-34