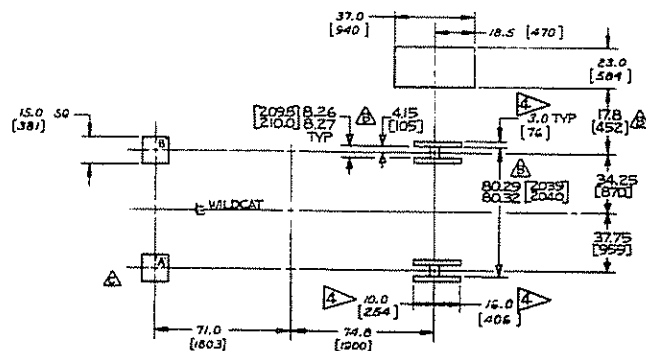
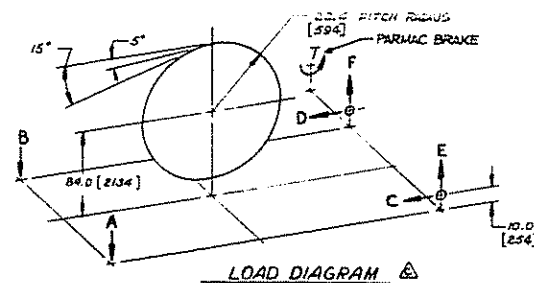


NOTES

1. ALL DIMENSIONS IN \square ARE IN MILLIMETERS
2. DRY WEIGHT 107,200 LB [48640 kg]
3. MAXIMUM COUPLING MISALIGNMENT $0^{\circ}30'$ \pm 0.10 [254] TLR.
4. CUSTOMER FURNISHED PIVOT SUPPORT PLATES (REF DWG 5585713)
5. WINDLASS DECOR, ITEM 13, NOT SHOWN.
6. SEE REF DWGS:
AIR SCHEMATIC 5585419
ELECTRIC SCHEMATIC 5585439
CONTROL SYS. INTERCON. 5585440
WATER SCHEMATIC 5585681

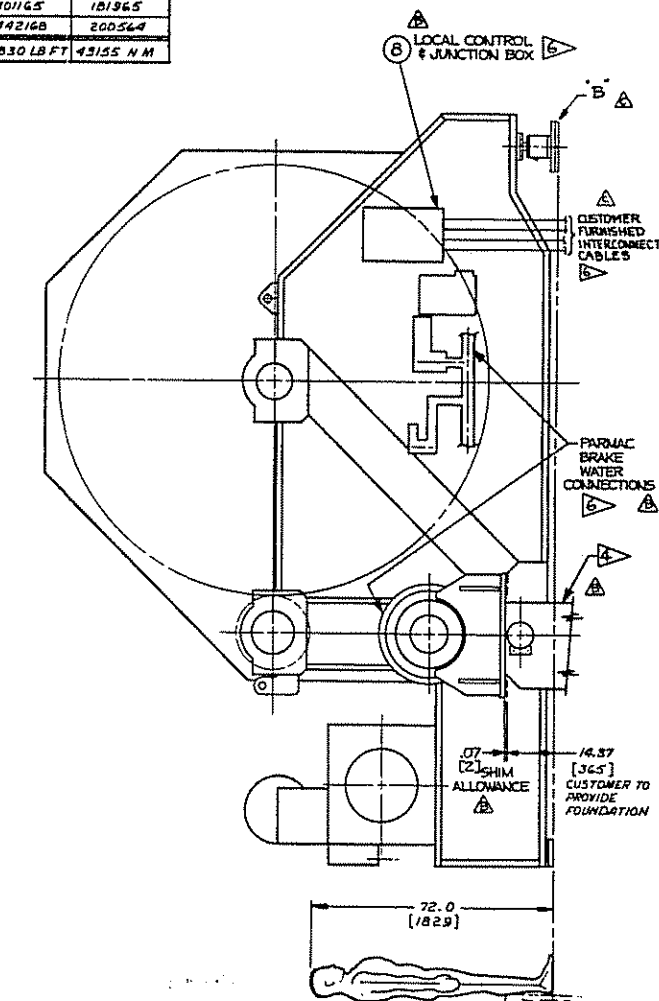
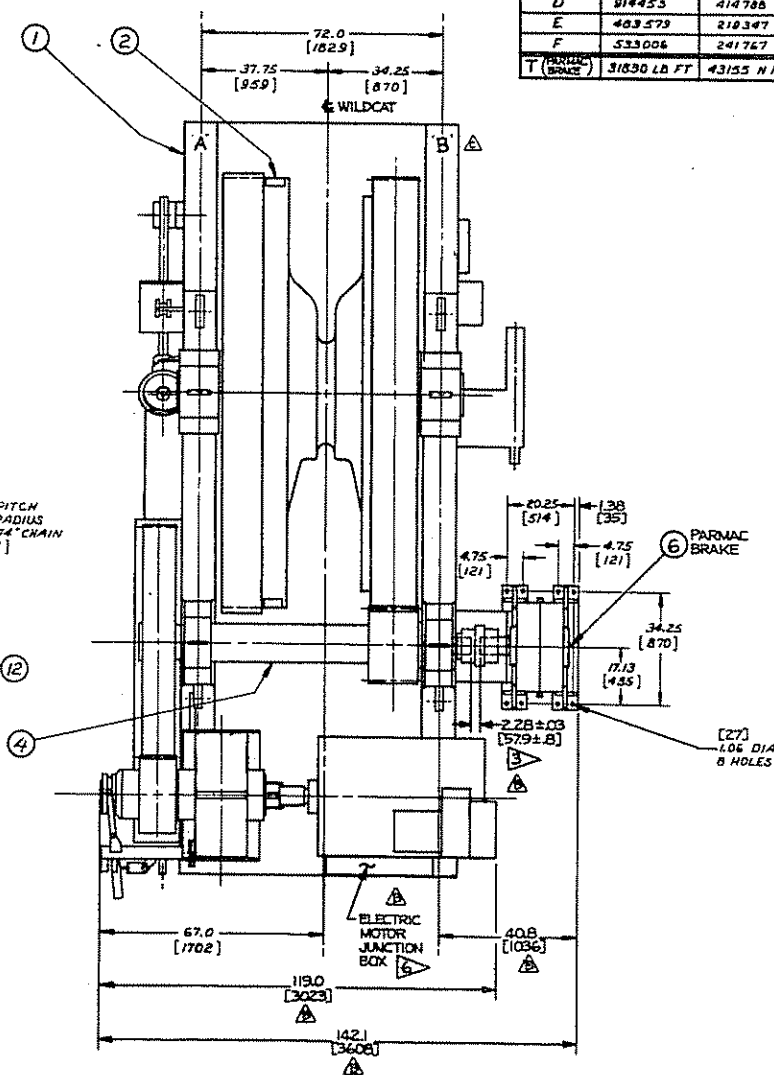
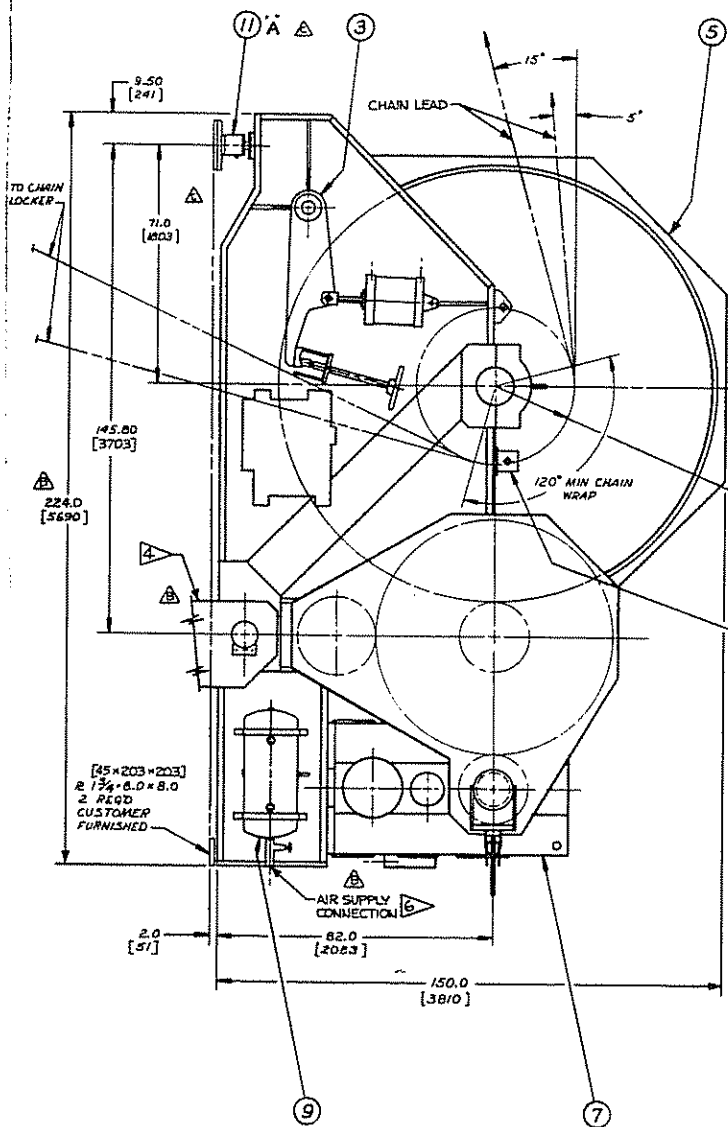


FOUNDATION PLAN
SCALE: NONE



FOUNDATION LOADING AT B.S. OF $3\frac{3}{4}$ [95] CHAIN = 1750,770 LB [794 MTOW]

REACTION LOCATION	5° CHAIN ANGLE		15° CHAIN ANGLE	
	LBS	Kg	LBS	Kg
A	603 734	273 849	664 285	301 314
B	665 441	301 839	732 101	332 111
C	826 655	374 864	804 446	364 880
D	914 453	414 788	886 668	402 186
E	483 579	218 347	401 165	181 965
F	533 006	241 767	442 168	200 564
T (BRIDGE)	31830 LB FT	43155 N M	31830 LB FT	43155 N M



SEE MASTER LISTS

FIGURE 1-1.
General Arrangement
Page 1-17

TABLE 1-1. WMD-60 Anchor Windlass Specifications.

Item	Specification
Windlass Dimensions	
Length	224.0 inches (5 690 mm)
Width	142.1 inches (3 608 mm)
Height	152.0 inches (3 861 mm)
Windlass Weight (Less Remote Controls)	102,300 pounds (4 605 kg) <i>46,100 kg</i>
Windlass Chain Size	3.75 inch (95mm) welded stud link chain.
Wildcat Band Brake	
Diameter	128.0 inches (3 251 mm)
Width	12.0 inches (305 mm)
Actuation	Air-set and air released.
Static Holding Capacity	1,093,200 pounds (496 MT) based on a maximum brake ring temperature of 350 °F (176.6 °C).
Drag Brake	
Type	Parnac Hydromatic V-80.
Capacity	Up to 280,000 pounds (127 MT) line tension at chain speed of 600 FPM (183 MPM).
Cooling Requirements	300 GPM cooling water at 15-25 PSI..
Power Unit:	General Electric Model 752 DC Traction Motor. Refer to manufacturers data included with this manual.
Power Unit Motor Brake	Static holding capacity of 882,000 pounds (400 MT).
Windlass Operating Temperature	Ambient temperatures of -14 to +140 °F (-26 to +60 °C) based on average operating cycles of 8 hours in 24.
Air System	Ships air at 100 PSI (7 kg/cm ²) of clean, dry air at a volume of 10 SCFM (.28 m ³ /min).
Performance	Theoretical performance of the windlass based

(Continued on the next page)

on in formation obtained from the electric motor manufacturer is illustrated in Figure 1-3, for reference only. Actual operating performance may vary from that illustrated.