



Frank Mohn Flatoy AS
Oil & Gas Division

INSTRUMENT DATASHEET F03

MAGNETIC FLOWMETER

Doc. no.: 1562-050-4

Rev.: A Sign: SMK

Tag: 50-FT 0111A
Service description: FLOWMETER TO/FROM SKIRTS
P & ID Reference: 1562-006-1 / MAUR-FMF-P-0001
Line/Equipment No.:
Area Code: SUBSEA
Package/Contract No.: 623414
Process datasheet no.:

CALIBRATION VALUES
Calibrated range: 0 - 250 M3/H
Calibration factor: NA
High-high setting: NA
High setting: NA
Low setting: NA
Low-low setting: NA
Note:

GENERAL

1 **Type:** MAGNETIC FLOWMETER
 2 **Complete assembly:** ELEMENT / REMOTE MOUNTED TRANSMITTER
 3 **Manufacturer:** DANFOSS
 4 **Manufacturers model no.:** 3100-121X43100Y
Mounting: INLINE
Weight: 25 KG

INSTRUMENT CHARACTERISTICS

7 **Characteristic:** LINEAR
 8 **Accuracy:** +0,25 %
 9 **Repeatability:** +0,1 %
 10 **Adjustable range:** YES
 11 **Zero adjustment:** YES
 12 **Span adjustment:** YES
 13 **Operating limits:** -20 TO +50 DEG C

BODY

14 **Conn. size/type process:** 4" 150 LB RF FLANGE
Weight: 150 LB
Connection span: 280 MM
Body inner diameter: MM
 18 **Normal service spec.:** SEAWATER
 19 **Material, body:** STEEL
 20 **Material, liner:** NEOPREN
 21 **Protective coating:** NORSOK

ELEMENT

22 **Type:** ELECTROMAGNETIC
 23 **Min. conductivity:** 5 MICR/SIM
 24 **Material, element:** ELECTRODES.HASTELLOY

CASE

25 **Mounting:** REMOTE, SEE NOTE
 26 **Extension length:** NA
 27 **Flying lead:** NO
 28 **Dimension:** 182*131*155 mm
 29 **Material:** POLYAMID
 30 **Enclosure protection:** IP 67
 31 **Hazardous area:** NO
 32 **Ex. classification:** NA
 33 **Sign. gland type/size:** PG 13.5
 34 **Power gland type/size:** PG 13.5
 35 **Protective coating:** NA

ELECTRICAL DATA

36 **Function:** TRANSMITTER
 37 **Output signal:** 4-20 mA + FLOW DIRECTION
 38 **Output action:** DIRECT
 39 **Supply voltage:** 220 VAC
 40 **Consumption:** 9 W
 41 **Load limitation:** 800 OHM
 42 **External power supply:** YES

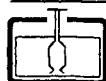
NOTE:

TO BE SUITABLE FOR SUBMERGED OPERATION

THE FOLLOWING SHALL BE INCLUDED:

- METERING HEAD
- SYLGARD FOR FILLING OF CONNECTION HEAD AFTER TERMINATION 085U220
- WALL MOUNTING BRACKET 085U1001
- SIGNAL CONVERTER 083F5003

THE SIGNAL CONVERTER SHALL BE MOUNTED IN A DRY SUBSEA BOTTLE.



05.02.2001	ISSUED FOR PURCHASE	SMK	KSS	KSS	538-605-403	A
Date	Issue/description:	Prepared	Checked	Approved	Datasheet no.	Rev



Frank Mohn Flatøy AS
Oil & Gas Division

INSTRUMENT DATASHEET F03

MAGNETIC FLOWMETER

Doc. no.: 1562-050-4

Rev.: A Sign: SMK

Tag: **50-FT 0111B**
Service description: FLOWMETER TO/FROM SKIRTS
P & ID Reference: 1562-006-1 / MAUR-FMF-P-0001
Line/Equipment No.:
Area Code: SUBSEA
Package/Contract No.: 623414
Process datasheet no.:

CALIBRATION VALUES

Calibrated range: 0 - 250 M3/H
Calibration factor: NA
High-high setting: NA
High setting: NA
Low setting: NA
Low-low setting: NA
Note:

GENERAL

1 Type: MAGNETIC FLOWMETER
2 Complete assembly: ELEMENT / REMOTE MOUNTED TRANSMITTER
3 Manufacturer: DANFOSS
4 Manufacturers model no.: 3100-121X43100Y

Mounting: INLINE
Weight: 25 KG

INSTRUMENT CHARACTERISTICS

7 Characteristic: LINEAR
8 Accuracy: +-0,25 %
9 Repeatability: +-0,1 %
10 Adjustable range: YES
11 Zero adjustment: YES
12 Span adjustment: YES
13 Operating limits: -20 TO +50 DEG C

BODY

14 Conn. size/type process: 4" 150 LB RF FLANGE
15 Weight: 150 LB
16 Connection span: 280 MM
17 Body inner diameter: MM
18 Sour service spec.: SEAWATER
19 Material, body: STEEL
20 Material, liner: NEOPREN
21 Protective coating: NORSOK

ELEMENT

22 Type: ELECTROMAGNETIC
23 Min. conductivity: 5 MICR/SIM
24 Material, element: ELECTRODES.HASTELLOY

CASE

25 Mounting: REMOTE, SEE NOTE
26 Extension length: NA
27 Flying lead: NO
28 Dimension: 182*131*155 mm
29 Material: POLYAMID
30 Enclosure protection: IP 67
31 Hazardous area: NO
32 Ex. classification: NA
33 Sign. gland type/size: PG 13.5
34 Power gland type/size: PG 13.5
35 Protective coating: NA

ELECTRICAL DATA

36 Function: TRANSMITTER
37 Output signal: 4-20 mA + FLOW DIRECTION
38 Output action: DIRECT
39 Supply voltage: 220 VAC
40 Consumption: 9 W
41 Load limitation: 800 OHM
42 External power supply: YES

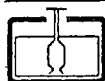
NOTE:

TO BE SUITABLE FOR SUBMERGED OPERATION

THE FOLLOWING SHALL BE INCLUDED:

- METERING HEAD
- SYLGARD FOR FILLING OF CONNECTION HEAD AFTER TERMINATION 085U220
- WALL MOUNTING BRACET 085U1001
- SIGNAL CONVERTER 083F5003

THE SIGNAL CONVERTER SHALL BE MOUNTED IN A DRY SUBSEA BOTTLE.



05.02.2001	ISSUED FOR PURCHASE	SMK	KSS	KSS	538-605-403	A
Date	Issue/description:	Prepared	Checked	Approved	Datasheet no.	Rev



Frank Mohn Flatøy AS
Oil & Gas Division

INSTRUMENT DATASHEET F03

MAGNETIC FLOWMETER

Doc. no.: 1562-050-4

Rev.: A Sign: SMK

Tag: 50-FT 0111C
 Service description: FLOWMETER TO/FROM SKIRTS
 P & ID Reference: 1562-006-1 / MAUR-FMF-P-0001
 Line/Equipment No.:
 Area Code: SUBSEA
 Package/Contract No.: 623414
 Process datasheet no.:

CALIBRATION VALUES
 Calibrated range: 0 - 250 M3/H
 Calibration factor: NA
 High-high setting: NA
 High setting: NA
 Low setting: NA
 Low-low setting: NA
 Note:

GENERAL

1 Type: MAGNETIC FLOWMETER
 2 Complete assembly: ELEMENT / REMOTE MOUNTED TRANSMITTER
 3 Manufacturer: DANFOSS
 4 Manufacturers model no.: 3100-121X43100Y

Mounting: INLINE
 Weight: 25 KG

INSTRUMENT CHARACTERISTICS

7 Characteristic: LINEAR
 8 Accuracy: +0,25 %
 9 Repeatability: +0,1 %
 10 Adjustable range: YES
 11 Zero adjustment: YES
 12 Span adjustment: YES
 13 Operating limits: -20 TO +50 DEG C

BODY

14 Conn. size/type process: 4" 150 LB RF FLANGE
 15 Weight: 150 LB
 Connection span: 280 MM
 Body inner diameter: MM
 18 Sour service spec.: SEAWATER
 19 Material, body: STEEL
 20 Material, liner: NEOPREN
 21 Protective coating: NORSOK

ELEMENT

22 Type: ELECTROMAGNETIC
 23 Min. conductivity: 5 MICR/SIM
 24 Material, element: ELECTRODES.HASTELLOY

CASE

25 Mounting: REMOTE, SEE NOTE
 26 Extension length: NA
 27 Flying lead: NO
 28 Dimension: 182*131*155 mm
 29 Material: POLYAMID
 30 Enclosure protection: IP 67
 31 Hazardous area: NO
 32 Ex. classification: NA
 33 Sign. gland type/size: PG 13.5
 34 Power gland type/size: PG 13.5
 35 Protective coating: NA

ELECTRICAL DATA

36 Function: TRANSMITTER
 37 Output signal: 4-20 mA + FLOW DIRECTION
 38 Output action: DIRECT
 39 Supply voltage: 220 VAC
 40 Consumption: 9 W
 41 Load limitation: 800 OHM
 42 External power supply: YES

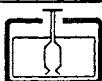
NOTE:

TO BE SUITABLE FOR SUBMERGED OPERATION

THE FOLLOWING SHALL BE INCLUDED:

- METERING HEAD
- SYLGARD FOR FILLING OF CONNECTION HEAD AFTER TERMINATION 085U220
- WALL MOUNTING BRACET 085U1001
- SIGNAL CONVERTER 083F5003

THE SIGNAL CONVERTER SHALL BE MOUNTED IN A DRY SUBSEA BOTTLE.



05.02.2001	ISSUED FOR PURCHASE	SMK	KSS	KSS	538-605-403	A
Date	Issue/description:	Prepared	Checked	Approved	Datasheet no.	Rev



Frank Mohn Flatøy AS
Oil & Gas Division

INSTRUMENT DATASHEET F03

MAGNETIC FLOWMETER

Doc. no.: 1562-050-4

Rev.: A Sign: SMK

Tag: **50-FT 0112A**
Service description: FLOWMETER TO/FROM SKIRTS

P & ID Reference: 1562-006-1 / MAUR-FMF-P-0001
Line/Equipment No.:
Area Code: SUBSEA
Package/Contract No.: 623414
Process datasheet no.:

CALIBRATION VALUES

Calibrated range: 0 - 250 M3/H
Calibration factor: NA
High-high setting: NA
High setting: NA
Low setting: NA
Low-low setting: NA
Note:

GENERAL

1 Type: MAGNETIC FLOWMETER
2 Complete assembly: ELEMENT / REMOTE MOUNTED TRANSMITTER
3 Manufacturer: DANFOSS
4 Manufacturers model no.: 3100-121X43100Y

Mounting: INLINE
Weight: 25 KG

INSTRUMENT CHARACTERISTICS

7 Characteristic: LINEAR
8 Accuracy: $\pm 0,25\%$
9 Repeatability: $\pm 0,1\%$
10 Adjustable range: YES
11 Zero adjustment: YES
12 Span adjustment: YES
13 Operating limits: -20 TO +50 DEG C

BODY

14 Conn. size/type process: 4" 150 LB RF FLANGE

15 Weight: 150 LB
Connection span: 280 MM
Body inner diameter: MM
18 Sour service spec.: SEAWATER
19 Material, body: STEEL
20 Material, liner: NEOPREN
21 Protective coating: NORSOK

ELEMENT

22 Type: ELECTROMAGNETIC
23 Min. conductivity: 5 MICR/SIM
24 Material, element: ELECTRODES.HASTELLOY

CASE

25 Mounting: REMOTE, SEE NOTE
26 Extension length: NA
27 Flying lead: NO
28 Dimension: 182*131*155 mm
29 Material: POLYAMID
30 Enclosure protection: IP 67
31 Hazardous area: NO
32 Ex. classification: NA
33 Sign. gland type/size: PG 13.5
34 Power gland type/size: PG 13.5
35 Protective coating: NA

ELECTRICAL DATA

36 Function: TRANSMITTER
37 Output signal: 4-20 mA + FLOW DIRECTION
38 Output action: DIRECT
39 Supply voltage: 220 VAC
40 Consumption: 9 W
41 Load limitation: 800 OHM
42 External power supply: YES

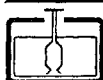
NOTE:

TO BE SUITABLE FOR SUBMERGED OPERATION

THE FOLLOWING SHALL BE INCLUDED:

-METERING HEAD
-SYLGARD FOR FILLING OF CONNECTION HEAD AFTHER TERMINATION 085U220
-WALL MOUNTING BRACET 085U1001
-SIGNAL CONVERTER 083F5003

THE SIGNAL CONVERTER SHALL BE MOUNTED IN A DRY SUBSEA BOTTLE.



05.02.2001	ISSUED FOR PURCHASE	SMK	KSS	KSS	538-605-403	A
Date	Issue/description:	Prepared	Checked	Approved	Datasheet no.	Rev



Frank Mohn Flato AS
Oil & Gas Division

INSTRUMENT DATASHEET F03
MAGNETIC FLOWMETER

Doc. no.: 1562-050-4
Rev.: A Sign: SMK

Tag: 50-FT 0112B
Service description: FLOWMETER TO/FROM SKIRTS
P & ID Reference: 1562-006-1 / MAUR-FMF-P-0001
Line/Equipment No.:
Area Code: SUBSEA
Package/Contract No.: 623414
Process datasheet no.:

CALIBRATION VALUES
Calibrated range: 0 - 250 M3/H
Calibration factor: NA
High-high setting: NA
High setting: NA
Low setting: NA
Low-low setting: NA
Note:

GENERAL

1 Type: MAGNETIC FLOWMETER
2 Complete assembly: ELEMENT / REMOTE MOUNTED TRANSMITTER
3 Manufacturer: DANFOSS
4 Manufacturers model no.: 3100-121X43100Y
Mounting: INLINE
Weight: 25 KG

INSTRUMENT CHARACTERISTICS

7 Characteristic: LINEAR
8 Accuracy: +0,25 %
9 Repeatability: +0,1 %
10 Adjustable range: YES
11 Zero adjustment: YES
12 Span adjustment: YES
13 Operating limits: -20 TO +50 DEG C

BODY

14 Conn. size/type process: 4" 150 LB RF FLANGE
Mounting: 150 LB
Connection span: 280 MM
Body inner diameter: MM
18 Sour service spec.: SEAWATER
19 Material, body: STEEL
20 Material, liner: NEOPREN
21 Protective coating: NORSOK

ELEMENT

22 Type: ELECTROMAGNETIC
23 Min. conductivity: 5 MICR/SIM
24 Material, element: ELECTRODES.HASTELLOY

CASE

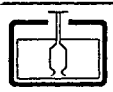
25 Mounting: REMOTE, SEE NOTE
26 Extension length: NA
27 Flying lead: NO
28 Dimension: 182*131*155 mm
29 Material: POLYAMID
30 Enclosure protection: IP 67
31 Hazardous area: NO
32 Ex. classification: NA
33 Sign. gland type/size: PG 13.5
34 Power gland type/size: PG 13.5
35 Protective coating: NA

ELECTRICAL DATA

36 Function: TRANSMITTER
37 Output signal: 4-20 mA + FLOW DIRECTION
38 Output action: DIRECT
39 Supply voltage: 220 VAC
40 Consumption: 9 W
41 Load limitation: 800 OHM
42 External power supply: YES

NOTE:

TO BE SUITABLE FOR SUBMERGED OPERATION
THE FOLLOWING SHALL BE INCLUDED:
-METERING HEAD
-SYLGARD FOR FILLING OF CONNECTION HEAD AFTHER TERMINATION 085U220
-WALL MOUNTING BRACET 085U1001
-SIGNAL CONVERTER 083F5003
THE SIGNAL CONVERTER SHALL BE MOUNTED IN A DRY SUBSEA BOTTLE.



05.02.2001	ISSUED FOR PURCHASE	SMK	KSS	KSS	538-605-403	A
Date	Issue/description:	Prepared	Checked	Approved	Datasheet no.	Rev



Frank Mohn Flatøy AS
Oil & Gas Division

INSTRUMENT DATASHEET F03

MAGNETIC FLOWMETER

Doc. no.: 1562-050-4

Rev.: A Sign: SMK

Tag: 50-FT 0112C
 Service description: FLOWMETER TO/FROM SKIRTS
 P & ID Reference: 1562-006-1 / MAUR-FMF-P-0001
 Line/Equipment No.:
 Area Code: MAIN DECK/SUBSEA
 Package/Contract No.: 623414
 Process datasheet no.:

CALIBRATION VALUES
 Calibrated range: 0 - 250 M3/H
 Calibration factor: NA
 High-high setting: NA
 High setting: NA
 Low setting: NA
 Low-low setting: NA
 Note:

GENERAL

1 Type: MAGNETIC FLOWMETER
 2 Complete assembly: ELEMENT / REMOTE MOUNTED TRANSMITTER
 3 Manufacturer: DANFOSS
 4 Manufacturers model no.: 3100-121X43100Y
 Mounting: INLINE
 Weight: 25 KG

INSTRUMENT CHARACTERISTICS

7 Characteristic: LINEAR
 8 Accuracy: +-0,25 %
 9 Repeatability: +-0,1 %
 10 Adjustable range: YES
 11 Zero adjustment: YES
 12 Span adjustment: YES
 13 Operating limits: -20 TO +50 DEG C

BODY

14 Conn. size/type process: 4" 150 LB RF FLANGE
 Weight: 150 LB
 Connection span: 280 MM
 Body inner diameter: MM
 18 Sour service spec.: SEAWATER
 19 Material, body: STEEL
 20 Material, liner: NEOPREN
 21 Protective coating: NORSOK

ELEMENT

22 Type: ELECTROMAGNETIC
 23 Min. conductivity: 5 MICR/SIM
 24 Material, element: ELECTRODES.HASTELLOY

CASE

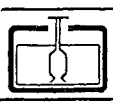
25 Mounting: REMOTE, SEE NOTE
 26 Extension length: NA
 27 Flying lead: NO
 28 Dimension: 182*131*155 mm
 29 Material: POLYAMID
 30 Enclosure protection: IP 67
 31 Hazardous area: NO
 32 Ex. classification: NA
 33 Sign. gland type/size: PG 13.5
 34 Power gland type/size: PG 13.5
 35 Protective coating: NA

ELECTRICAL DATA

36 Function: TRANSMITTER
 37 Output signal: 4-20 mA + FLOW DIRECTION
 38 Output action: DIRECT
 39 Supply voltage: 220 VAC
 40 Consumption: 9 W
 41 Load limitation: 800 OHM
 42 External power supply: YES

NOTE:

TO BE SUITABLE FOR SUBMERGED OPERATION
 THE FOLLOWING SHALL BE INCLUDED:
 -METERING HEAD
 -SYLGARD FOR FILLING OF CONNECTION HEAD AFTHER TERMINATION 085U220
 -WALL MOUNTING BRACET 085U1001
 -SIGNAL CONVERTER 083F5003
 THE SIGNAL CONVERTER SHALL BE MOUNTED IN A DRY SUBSEA BOTTLE.



05.02.2001	ISSUED FOR PURCHASE	SMK	KSS	KSS	538-605-403	A
Date	Issue/description:	Prepared	Checked	Approved	Datasheet no.	Rev



Frank Mohn Flatøy AS
Oil & Gas Division

INSTRUMENT DATASHEET F03

MAGNETIC FLOWMETER

Doc. no.: 1562-050-4

Rev.: A Sign: SMK

Tag: 50-FT 0113A
Service description: FLOWMETER TO/FROM SKIRTS

P & ID Reference: 1562-006-1 / MAUR-FMF-P-0001
Line/Equipment No.:
Area Code: MAIN DECK/SUBSEA
Package/Contract No.: 623414
Process datasheet no.:

CALIBRATION VALUES
Calibrated range: 0 - 250 M3/H
Calibration factor: NA
High-high setting: NA
High setting: NA
Low setting: NA
Low-low setting: NA
Note:

GENERAL

1 **Type:** MAGNETIC FLOWMETER
2 **Complete assembly:** ELEMENT / REMOTE MOUNTED TRANSMITTER
3 **Manufacturer:** DANFOSS
4 **Manufacturers model no.:** 3100-121X43100Y

5 **Mounting:** INLINE
6 **Weight:** 25 KG

INSTRUMENT CHARACTERISTICS

7 **Characteristic:** LINEAR
8 **Accuracy:** +-0,25 %
9 **Repeatability:** +-0,1 %
10 **Adjustable range:** YES
11 **Zero adjustment:** YES
12 **Span adjustment:** YES
13 **Operating limits:** -20 TO +50 DEG C

BODY

14 **Conn. size/type process:** 4" 150 LB RF FLANGE
15 **Rating:** 150 LB
16 **Connection span:** 280 MM
17 **Body inner diameter:** MM
18 **Sour service spec.:** SEAWATER
19 **Material, body:** STEEL
20 **Material, liner:** NEOPREN
21 **Protective coating:** NORSOK

ELEMENT

22 **Type:** ELECTROMAGNETIC
23 **Min. conductivity:** 5 MICR/SIM
24 **Material, element:** ELECTRODES.HASTELLOY

CASE

25 **Mounting:** REMOTE, SEE NOTE
26 **Extension length:** NA
27 **Flying lead:** NO
28 **Dimension:** 182*131*155 mm
29 **Material:** POLYAMID
30 **Enclosure protection:** IP 67
31 **Hazardous area:** NO
32 **Ex. classification:** NA
33 **Sign. gland type/size:** PG 13.5
34 **Power gland type/size:** PG 13.5
35 **Protective coating:** NA

ELECTRICAL DATA

36 **Function:** TRANSMITTER
37 **Output signal:** 4-20 mA + FLOW DIRECTION
38 **Output action:** DIRECT
39 **Supply voltage:** 220 VAC
40 **Consumption:** 9 W
41 **Load limitation:** 800 OHM
42 **External power supply:** YES

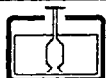
NOTE:

TO BE SUITABLE FOR SUBMERGED OPERATION

THE FOLLOWING SHALL BE INCLUDED:

- METERING HEAD
- SYLGARD FOR FILLING OF CONNECTION HEAD AFTHER TERMINATION 085U220
- WALL MOUNTING BRACET 085U1001
- SIGNAL CONVERTER 083F5003

THE SIGNAL CONVERTER SHALL BE MOUNTED IN A DRY SUBSEA BOTTLE.



05.02.2001	ISSUED FOR PURCHASE	SMK	KSS	KSS	538-605-403	A
Date	Issue/description:	Prepared	Checked	Approved	Datasheet no.	Rev



Frank Mohn Flatøy AS
Oil & Gas Division

INSTRUMENT DATASHEET F03

MAGNETIC FLOWMETER

Doc. no.: 1562-050-4

Rev.: A Sign: SMK

Tag: **50-FT 0113B**
Service description: **FLOWMETER TO/FROM SKIRTS**

P & ID Reference: **1562-006-1 / MAUR-FMF-P-0001**
Line/Equipment No.:
Area Code: **SUBSEA**
Package/Contract No.: **623414**
Process datasheet no.:

CALIBRATION VALUES

Calibrated range: **0 - 250 M3/H**
Calibration factor: **NA**
High-high setting: **NA**
High setting: **NA**
Low setting: **NA**
Low-low setting: **NA**
Note:

GENERAL

1 Type: **MAGNETIC FLOWMETER**
2 Complete assembly: **ELEMENT / REMOTE MOUNTED TRANSMITTER**
3 Manufacturer: **DANFOSS**
4 Manufacturers model no.: **3100-121X43100Y**

Mounting: **INLINE**
Weight: **25 KG**

INSTRUMENT CHARACTERISTICS

7 Characteristic: **LINEAR**
8 Accuracy: **+/-0,25 %**
9 Repeatability: **+/-0,1 %**
10 Adjustable range: **YES**
11 Zero adjustment: **YES**
12 Span adjustment: **YES**
13 Operating limits: **-20 TO +50 DEG C**

BODY

14 Conn. size/type process: **4" 150 LB RF FLANGE**

15 Weight: **150 LB**
16 Connection span: **280 MM**
17 Body inner diameter: **MM**
18 Sour service spec.: **SEAWATER**
19 Material, body: **STEEL**
20 Material, liner: **NEOPREN**
21 Protective coating: **NORSOK**

ELEMENT

22 Type: **ELECTROMAGNETIC**
23 Min. conductivity: **5 MICR/SIM**
24 Material, element: **ELECTRODES.HASTELLOY**

CASE

25 Mounting: **REMOTE, SEE NOTE**
26 Extension length: **NA**
27 Flying lead: **NO**
28 Dimension: **182*131*155 mm**
29 Material: **POLYAMID**
30 Enclosure protection: **IP 67**
31 Hazardous area: **NO**
32 Ex. classification: **NA**
33 Sign. gland type/size: **PG 13.5**
34 Power gland type/size: **PG 13.5**
35 Protective coating: **NA**

ELECTRICAL DATA

36 Function: **TRANSMITTER**
37 Output signal: **4-20 mA + FLOW DIRECTION**
38 Output action: **DIRECT**
39 Supply voltage: **220 VAC**
40 Consumption: **9 W**
41 Load limitation: **800 OHM**
42 External power supply: **YES**

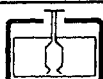
NOTE:

TO BE SUITABLE FOR SUBMERGED OPERATION

THE FOLLOWING SHALL BE INCLUDED:

-METERING HEAD
-SYLGARD FOR FILLING OF CONNECTION HEAD AFTHER
TERMINATION 085U220
-WALL MOUNTING BRACET 085U1001
-SIGNAL CONVERTER 083F5003

THE SIGNAL CONVERTER SHALL BE MOUNTED IN A DRY
SUBSEA BOTTLE.



05.02.2001	ISSUED FOR PURCHASE	SMK	KSS	KSS	538-605-403	A
Date	Issue/description:	Prepared	Checked	Approved	Datasheet no.	Rev



Frank Mohn Flatøy AS
Oil & Gas Division

INSTRUMENT DATASHEET F03

MAGNETIC FLOWMETER

Doc. no.: 1562-050-4

Rev.: A Sign: SMK

Tag: 50-FT 0113C
Service description: FLOWMETER TO/FROM SKIRTS
P & ID Reference: 1562-006-1 / MAUR-FMF-P-0001
Line/Equipment No.:
Area Code: SUBSEA
Package/Contract No.: 623414
Process datasheet no.:

CALIBRATION VALUES

Calibrated range: 0 - 250 M3/H
Calibration factor: NA
High-high setting: NA
High setting: NA
Low setting: NA
Low-low setting: NA
Note:

GENERAL

1 **Type:** MAGNETIC FLOWMETER
 2 **Complete assembly:** ELEMENT / REMOTE MOUNTED TRANSMITTER
 3 **Manufacturer:** DANFOSS
 4 **Manufacturers model no.:** 3100-121X43100Y
Mounting: INLINE
Weight: 25 KG

INSTRUMENT CHARACTERISTICS

7 **Characteristic:** LINEAR
 8 **Accuracy:** +-0,25 %
 9 **Repeatability:** +-0,1 %
 10 **Adjustable range:** YES
 11 **Zero adjustment:** YES
 12 **Span adjustment:** YES
 13 **Operating limits:** -20 TO +50 DEG C

BODY

14 **Conn. size/type process:** 4" 150 LB RF FLANGE
Rating: 150 LB
Connection span: 280 MM
Body inner diameter: MM
 18 **Seawater service spec.:** SEAWATER
 19 **Material, body:** STEEL
 20 **Material, liner:** NEOPREN
 21 **Protective coating:** NORSOK

ELEMENT

22 **Type:** ELECTROMAGNETIC
 23 **Min. conductivity:** 5 MICR/SIM
 24 **Material, element:** ELECTRODES.HASTELLOY

CASE

25 **Mounting:** REMOTE, SEE NOTE
 26 **Extension length:** NA
 27 **Flying lead:** NO
 28 **Dimension:** 182*131*155 mm
 29 **Material:** POLYAMID
 30 **Enclosure protection:** IP 67
 31 **Hazardous area:** NO
 32 **Ex. classification:** NA
 33 **Sign. gland type/size:** PG 13.5
 34 **Power gland type/size:** PG 13.5
 35 **Protective coating:** NA

ELECTRICAL DATA

36 **Function:** TRANSMITTER
 37 **Output signal:** 4-20 mA + FLOW DIRECTION
 38 **Output action:** DIRECT
 39 **Supply voltage:** 220 VAC
 40 **Consumption:** 9 W
 41 **Load limitation:** 800 OHM
 42 **External power supply:** YES

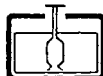
NOTE:

TO BE SUITABLE FOR SUBMERGED OPERATION

THE FOLLOWING SHALL BE INCLUDED:

- METERING HEAD
- SYLGARD FOR FILLING OF CONNECTION HEAD AFTHER TERMINATION 085U220
- WALL MOUNTING BRACET 085U1001
- SIGNAL CONVERTER 083F5003

THE SIGNAL CONVERTER SHALL BE MOUNTED IN A DRY SUBSEA BOTTLE.



05.02.2001	ISSUED FOR PURCHASE	SMK	KSS	KSS	538-605-403	A
Date	Issue/description:	Prepared	Checked	Approved	Datasheet no.	Rev



Frank Mohn Flatoy AS
Oil & Gas Division

INSTRUMENT DATASHEET F03

MAGNETIC FLOWMETER

Doc. no.: 1562-050-4

Rev.: A Sign: SMK

Tag: 50-FT0108A
Service description: FLOWMETER PUMP DISCHARGE

P & ID Reference: 1562-006-1 / MAUR-FMF-P-0001
Line/Equipment No.:
Area Code: SUBSEA
Package/Contract No.: 623414
Process datasheet no.:

CALIBRATION VALUES

Calibrated range: 0 - 600 m³/h
Calibration factor: NA
High-high setting: NA
High setting: NA
Low setting: NA
Low-low setting: NA
Note:

GENERAL

1 **Type:** MAGNETIC FLOWMETER
2 **Complete assembly:** ELEMENT / REMOTE MOUNTED TRANSMITTER
3 **Manufacturer:** DANFOSS
4 **Manufacturers model no.:** MAG 3100-151F41100Y

Mounting: INLINE
Weight: 61 KG

INSTRUMENT CHARACTERISTICS

7 **Characteristic:** LINEAR
8 **Accuracy:** +- 0,25 %
9 **Repeatability:** +-0,1 %
10 **Adjustable range:** YES
11 **Zero adjustment:** AUTOMATIC
12 **Span adjustment:** YES
13 **Operating limits:** -20 TO +50 DEG C

BODY

14 **Conn. size/type process:** 8" 150 LB RF FLANGE

15 **Rating:** 150 LB
16 **Connection span:** 350 MM
17 **Body inner diameter:** 203 MM
18 **Sour service spec.:** SEAWATER
19 **Material, body:** STEEL
20 **Material, liner:** NEOPREN
21 **Protective coating:** NORSOK

ELEMENT

22 **Type:** ELECTROMAGNETIC
23 **Min. conductivity:** 5 MICR/SIM
24 **Material, element:** ELECTRODES:HASTELOY C

CASE

25 **Mounting:** REMOTE, SEE NOTE
26 **Extension length:** NA
27 **Flying lead:** NO
28 **Dimension:** 240 x 170 x 154
29 **Material:** POLYAMID
30 **Enclosure protection:** IP67
31 **Hazardous area:** NO
32 **Ex. classification:** NA
33 **Sign. gland type/size:** M20*
34 **Power gland type/size:** M25*
35 **Protective coating:** NA

ELECTRICAL DATA

36 **Function:** TRANSMITTER
37 **Output signal:** 4-20 mA
38 **Output action:** DIRECT
39 **Supply voltage:** 220 VAC
40 **Consumption:** 10 VA
41 **Load limitation:** 800 OHM
42 **External power supply:** YES

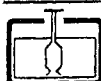
NOTE:

TO BE SUITABLE FOR SUBMERGED OPERATION

THE FOLLOWING SHALL BE INCLUDED

-METERING HEAD 3100-151X43100Y
-SYLGARD FOR FILLING OF CONNECTION HEAD AFTHER TERMINATION 085U220
-WALL MOUNTING BRACET 085U1001
-SIGNAL CONVERTER 083F5003

THE SIGNAL CONVERTER SHALL BE MOUNTED IN A DRY SUBSEA BOTTLE.



25.01.2000	ISSUED FOR PURCHASE	SMK	WBJ	WBJ	538-605-401	A
Date	Issue/description:	Prepared	Checked	Approved	Datasheet no.	Rev



Frank Mohn Flatøy AS
Oil & Gas Division

INSTRUMENT DATASHEET F03

MAGNETIC FLOWMETER

Doc. no.: 1562-050-4
Rev.: A Sign: SMK

Tag: 50-FT0108B
Service description: FLOWMETER PUMP DISCHARGE
P & ID Reference: 1562-006-1 / MAUR-FMF-P-0001
Line/Equipment No.:
Area Code: SUBSEA
Package/Contract No.: 623414
Process datasheet no.:

CALIBRATION VALUES
Calibrated range: 0 - 600 m3/h
Calibration factor: NA
High-high setting: NA
High setting: NA
Low setting: NA
Low-low setting: NA
Note:

GENERAL

- 1 Type: MAGNETIC FLOWMETER
- 2 Complete assembly: ELEMENT / REMOTE MOUNTED TRANSMITTER
- 3 Manufacturer: DANFOSS
- 4 Manufacturers model no.: MAG 3100-151F41100Y
- Mounting: INLINE
- Weight: 61 KG

INSTRUMENT CHARACTERISTICS

- 7 Characteristic: LINEAR
- 8 Accuracy: +- 0,25 %
- 9 Repeatability: +-0,1 %
- 10 Adjustable range: YES
- 11 Zero adjustment: AUTOMATIC
- 12 Span adjustment: YES
- 13 Operating limits: -20 TO +50 DEG C

BODY

- 14 Conn. size/type process: 8" 150 LB RF FLANGE
- Weight: 150 LB
- Connection span: 350 MM
- Body inner diameter: 203 MM
- 18 Sour service spec.: SEAWATER
- 19 Material, body: STEEL
- 20 Material, liner: NEOPREN
- 21 Protective coating: NORSOK

ELEMENT

- 22 Type: ELECTROMAGNETIC
- 23 Min. conductivity: 5 MICR/SIM
- 24 Material, element: ELECTRODES:HASTELOY C

CASE

- 25 Mounting: REMOTE, SEE NOTE
- 26 Extension length: NA
- 27 Flying lead: NO
- 28 Dimension: 240 x 170 x 154
- 29 Material: POLYAMID
- 30 Enclosure protection: IP67
- 31 Hazardous area: NO
- 32 Ex. classification: NA
- 33 Sign. gland type/size: M20*
- 34 Power gland type/size: M25*
- 35 Protective coating: NA

ELECTRICAL DATA

- 36 Function: TRANSMITTER
- 37 Output signal: 4-20 mA
- 38 Output action: DIRECT
- 39 Supply voltage: 220 VAC
- 40 Consumption: 10 VA
- 41 Load limitation: 800 OHM
- 42 External power supply: YES

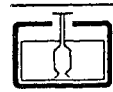
NOTE:

TO BE SUITABLE FOR SUBMERGED OPERATION

THE FOLLOWING SHALL BE INCLUDED

- METERING HEAD 3100-151X43100Y
- SYLGARD FOR FILLING OF CONNECTION HEAD AFTHER TERMINATION 085U220
- WALL MOUNTING BRACET 085U1001
- SIGNAL CONVERTER 083F5003

THE SIGNAL CONVERTER SHALL BE MOUNTED IN A DRY SUBSEA BOTTLE.



25.01.2000	ISSUED FOR PURCHASE	SMK	WBj	WBj	538-605-401	A
Date	Issue/description:	Prepared	Checked	Approved	Datasheet no.	Rev



Frank Mohn Flatøy AS
Oil & Gas Division

INSTRUMENT DATASHEET F03

MAGNETIC FLOWMETER

Doc. no.: 1562-050-4

Rev.: A Sign: SMK

Tag: 50-FT0108C
 Service description: FLOWMETER PUMP DISCHARGE
 P & ID Reference: 1562-006-1 / MAUR-FMF-P-0001
 Line/Equipment No.:
 Area Code: SUBSEA
 Package/Contract No.: 623414
 Process datasheet no.:

CALIBRATION VALUES
 Calibrated range: 0 - 600 m3/h
 Calibration factor: NA
 High-high setting: NA
 High setting: NA
 Low setting: NA
 Low-low setting: NA
 Note:

GENERAL

1 Type: MAGNETIC FLOWMETER
 2 Complete assembly: ELEMENT / REMOTE MOUNTED TRANSMITTER
 3 Manufacturer: DANFOSS
 4 Manufacturers model no.: MAG 3100-151F41100Y
 Mounting: INLINE
 Weight: 61 KG

INSTRUMENT CHARACTERISTICS

7 Characteristic: LINEAR
 8 Accuracy: +- 0,25 %
 9 Repeatability: +-0,1 %
 10 Adjustable range: YES
 11 Zero adjustment: AUTOMATIC
 12 Span adjustment: YES
 13 Operating limits: -20 TO +50 DEG C

BODY

14 Conn. size/type process: 8" 150 LB RF FLANGE
 Weight: 150 LB
 Connection span: 350 MM
 Body inner diameter: 203 MM
 18 Sour service spec.: SEAWATER
 19 Material, body: STEEL
 20 Material, liner: NEOPREN
 21 Protective coating: NORSOK

ELEMENT

22 Type: ELECTROMAGNETIC
 23 Min. conductivity: 5 MICR/SIM
 24 Material, element: ELECTRODES:HASTELOY C

CASE

25 Mounting: REMOTE, SEE NOTE
 26 Extension length: NA
 27 Flying lead: NO
 28 Dimension: 240 x 170 x 154
 29 Material: POLYAMID
 30 Enclosure protection: IP67
 31 Hazardous area: NO
 32 Ex. classification: NA
 33 Sign. gland type/size: M20*
 34 Power gland type/size: M25*
 35 Protective coating: NA

ELECTRICAL DATA

36 Function: TRANSMITTER
 37 Output signal: 4-20 mA
 38 Output action: DIRECT
 39 Supply voltage: 220 VAC
 40 Consumption: 10 VA
 41 Load limitation: 800 OHM
 42 External power supply: YES

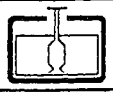
NOTE:

TO BE SUITABLE FOR SUBMERGED OPERATION

THE FOLLOWING SHALL BE INCLUDED

- METERING HEAD 3100-151X43100Y
- SYLGARD FOR FILLING OF CONNECTION HEAD AFTHER TERMINATION 085U220
- WALL MOUNTING BRACET 085U1001
- SIGNAL CONVERTER 083F5003

THE SIGNAL CONVERTER SHALL BE MOUNTED IN A DRY SUBSEA BOTTLE.



25.01.2000	ISSUED FOR PURCHASE	SMK	WBj	WBj	538-605-401	A
Date	Issue/description:	Prepared	Checked	Approved	Datasheet no.	Rev



Frank Mohn Flatøy AS
Oil & Gas Division

INSTRUMENT DATASHEET F03

MAGNETIC FLOWMETER

Doc. no.: 1562-050-4

Rev.: A Sign: SMK

Tag: 50-FT0109A
Service description: FLOWMETER PUMP DISCHARGE
P & ID Reference: 1562-006-1 / MAUR-FMF-P-0001
Line/Equipment No.:
Area Code: SUBSEA
Package/Contract No.: 623414
Process datasheet no.:

CALIBRATION VALUES

Calibrated range: 0 - 1200 m3/h
Calibration factor: NA
High-high setting: NA
High setting: NA
Low setting: NA
Low-low setting: NA
Note:

GENERAL

1 **Type:** MAGNETIC FLOWMETER
 2 **Complete assembly:** ELEMENT / REMOTE MOUNTED TRANSMITTER
 3 **Manufacturer:** DANFOSS
 4 **Manufacturers model no.:** MAG 3100-161X43100Y
Mounting: INLINE
Weight: 85 KG

INSTRUMENT CHARACTERISTICS

7 **Characteristic:** LINEAR
 8 **Accuracy:** +0,25 %
 9 **Repeatability:** +0,1 %
 10 **Adjustable range:** *
 11 **Zero adjustment:** YES
 12 **Span adjustment:** YES
 13 **Operating limits:** -20 TO +50 DEG C

BODY

14 **Conn. size/type process:** 10" 150 LB RF FLANGE
 15 **Rating:** 150 LB
Connection span: 510 MM
Body inner diameter: *
 18 **Service spec.:** SEAWATER
 19 **Material, body:** STEEL
 20 **Material, liner:** NEOPREN
 21 **Protective coating:** *

ELEMENT

22 **Type:** ELECTROMAGNETIC
 23 **Min. conductivity:** *
 24 **Material, element:** ELECTRODES:HASTELLOY

CASE

25 **Mounting:** REMOTE, SEE NOTE
 26 **Extension length:** NA
 27 **Flying lead:** NO
 28 **Dimension:** *
 29 **Material:** *
 30 **Enclosure protection:** IP67
 31 **Hazardous area:** NO
 32 **Ex. classification:** NA
 33 **Sign. gland type/size:** M20*
 34 **Power gland type/size:** M25
 35 **Protective coating:** *

ELECTRICAL DATA

36 **Function:** TRANSMITTER
 37 **Output signal:** 4-20 + Flow direction mA
 38 **Output action:** DIRECT
 39 **Supply voltage:** 220 VAC
 40 **Consumption:** *
 41 **Load limitation:** *
 42 **External power supply:** YES

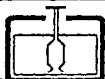
NOTE:

TO BE SUITABLE FOR SUBMERGED OPERATION

THE FOLLOWING SHALL BE INCLUDED

-METERING HEAD 3100-161X43100Y
 -SYLGARD FOR FILLING OF CONNECTION HEAD AFTER TERMINATION 085U220
 -WALL MOUNTING BRACKET 085U1001
 -SIGNAL CONVERTER 083F5003

THE SIGNAL CONVERTER SHALL BE MOUNTED IN A DRY SUBSEA BOTTLE.



08.10.1999	ISSUED FOR PURCHASE	SMK	WBj	WBj	538-605-402	-
Date	Issue/description:	Prepared	Checked	Approved	Datasheet no.	Rev



Frank Mohn Flatøy AS
Oil & Gas Division

INSTRUMENT DATASHEET F03

MAGNETIC FLOWMETER

Doc. no.: 1562-050-4

Rev.: A Sign: SMK

Tag: 50-FT0109B
 Service description: FLOWMETER PUMP DISCHARGE
 P & ID Reference: 1562-006-1 / MAUR-FMF-P-0001
 Line/Equipment No.:
 Area Code: SUBSEA
 Package/Contract No.: 623414
 Process datasheet no.:

CALIBRATION VALUES
 Calibrated range: 0 - 1200 m3/h
 Calibration factor: NA
 High-high setting: NA
 High setting: NA
 Low setting: NA
 Low-low setting: NA
 Note:

GENERAL

1 Type: MAGNETIC FLOWMETER
 2 Complete assembly: ELEMENT / REMOTE MOUNTED TRANSMITTER
 3 Manufacturer: DANFOSS
 4 Manufacturers model no.: MAG 3100-161X43100Y
 5 Mounting: INLINE
 6 Weight: 85 KG

INSTRUMENT CHARACTERISTICS

7 Characteristic: LINEAR
 8 Accuracy: +0,25 %
 9 Repeatability: +-0,1 %
 10 Adjustable range: *
 11 Zero adjustment: YES
 12 Span adjustment: YES
 13 Operating limits: -20 TO +50 DEG C

BODY

14 Conn. size/type process: 10" 150 LB RF FLANGE
 15 Rating: 150 LB
 16 Connection span: 510 MM
 Body inner diameter: *
 18 Sour service spec.: SEAWATER
 19 Material, body: STEEL
 20 Material, liner: NEOPREN
 21 Protective coating: *

ELEMENT

22 Type: ELECTROMAGNETIC
 23 Min. conductivity: *
 24 Material, element: ELECTRODES:HASTELLOY

CASE

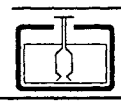
25 Mounting: REMOTE, SEE NOTE
 26 Extension length: NA
 27 Flying lead: NO
 28 Dimension: *
 29 Material: *
 30 Enclosure protection: IP67
 31 Hazardous area: NO
 32 Ex. classification: NA
 33 Sign. gland type/size: M20*
 34 Power gland type/size: M25
 35 Protective coating: *

ELECTRICAL DATA

36 Function: TRANSMITTER
 37 Output signal: 4-20 + Flow direction mA
 38 Output action: DIRECT
 39 Supply voltage: 220 VAC
 40 Consumption: *
 41 Load limitation: *
 42 External power supply: YES

NOTE:

TO BE SUITABLE FOR SUBMERGED OPERATION
 THE FOLLOWING SHALL BE INCLUDED
 -METERING HEAD 3100-161X43100Y
 -SYLGARD FOR FILLING OF CONNECTION HEAD AFTHER TERMINATION 085U220
 -WALL MOUNTING BRACET 085U1001
 -SIGNAL CONVERTER 083F5003
 THE SIGNAL CONVERTER SHALL BE MOUNTED IN A DRY SUBSEA BOTTLE.



08.10.1999	ISSUED FOR PURCHASE	SMK	WBj	WBj	538-605-402	-
Date	Issue/description:	Prepared	Checked	Approved	Datasheet no.	Rev



Frank Mohn Flatøy AS
Oil & Gas Division

INSTRUMENT DATASHEET F03

MAGNETIC FLOWMETER

Doc. no.: 1562-050-4

Rev.: A Sign: SMK

Tag: 50-FT0109C
Service description: FLOWMETER PUMP DISCHARGE
P & ID Reference: 1562-006-1 / MAUR-FMF-P-0001
Line/Equipment No.:
Area Code: SUBSEA
Package/Contract No.: 623414
Process datasheet no.:

CALIBRATION VALUES

Calibrated range: 0 - 1200 m3/h
Calibration factor: NA
High-high setting: NA
High setting: NA
Low setting: NA
Low-low setting: NA
Note:

GENERAL

1 **Type:** MAGNETIC FLOWMETER
 2 **Complete assembly:** ELEMENT / REMOTE MOUNTED TRANSMITTER
 3 **Manufacturer:** DANFOSS
 4 **Manufacturers model no.:** MAG 3100-161X43100Y
Mounting: INLINE
Weight: 85 KG

INSTRUMENT CHARACTERISTICS

7 **Characteristic:** LINEAR
 8 **Accuracy:** +-0,25 %
 9 **Repeatability:** +-0,1 %
 10 **Adjustable range:** *
 11 **Zero adjustment:** YES
 12 **Span adjustment:** YES
 13 **Operating limits:** -20 TO +50 DEG C

BODY

14 **Conn. size/type process:** 10" 150 LB RF FLANGE
 15 **Rating:** 150 LB
Connection span: 510 MM
Body inner diameter: *
 18 **Sour service spec.:** SEAWATER
 19 **Material, body:** STEEL
 20 **Material, liner:** NEOPREN
 21 **Protective coating:** *

ELEMENT

22 **Type:** ELECTROMAGNETIC
 23 **Min. conductivity:** *
 24 **Material, element:** ELECTRODES:HASTELLOY

CASE

25 **Mounting:** REMOTE, SEE NOTE
 26 **Extension length:** NA
 27 **Flying lead:** NO
 28 **Dimension:** *
 29 **Material:** *
 30 **Enclosure protection:** IP67
 31 **Hazardous area:** NO
 32 **Ex. classification:** NA
 33 **Sign. gland type/size:** M20*
 34 **Power gland type/size:** M25
 35 **Protective coating:** *

ELECTRICAL DATA

36 **Function:** TRANSMITTER
 37 **Output signal:** 4-20 + Flow direction mA
 38 **Output action:** DIRECT
 39 **Supply voltage:** 220 VAC
 40 **Consumption:** *
 41 **Load limitation:** *
 42 **External power supply:** YES

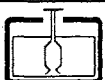
NOTE:

TO BE SUITABLE FOR SUBMERGED OPERATION

THE FOLLOWING SHALL BE INCLUDED

- METERING HEAD 3100-161X43100Y
- SYLGARD FOR FILLING OF CONNECTION HEAD AFTHER TERMINATION 085U220
- WALL MOUNTING BRACET 085U1001
- SIGNAL CONVERTER 083F5003

THE SIGNAL CONVERTER SHALL BE MOUNTED IN A DRY SUBSEA BOTTLE.



08.10.1999	ISSUED FOR PURCHASE	SMK	WBj	WBj	538-605-402	-
Date	Issue/description:	Prepared	Checked	Approved	Datasheet no.	Rev



Frank Mohn Flatøy AS
Oil & Gas Division

INSTRUMENT DATASHEET F03

MAGNETIC FLOWMETER

Doc. no.: 1562-050-4
Rev.: A Sign: SMK

Tag: 50-FT0110A
 Service description: FLOWMETER PUMP DISCHARGE
 P & ID Reference: 1562-006-1 / MAUR-FMF-P-0001
 Line/Equipment No.:
 Area Code: SUBSEA
 Package/Contract No.: 623414
 Process datasheet no.:

CALIBRATION VALUES
 Calibrated range: 0 - 600 m3/h
 Calibration factor: NA
 High-high setting: NA
 High setting: NA
 Low setting: NA
 Low-low setting: NA
 Note:

GENERAL

1 Type: MAGNETIC FLOWMETER
 2 Complete assembly: ELEMENT / REMOTE MOUNTED TRANSMITTER
 3 Manufacturer: DANFOSS
 4 Manufacturers model no.: MAG 3100-151F41100Y
 Mounting: INLINE
 Weight: 61 KG

INSTRUMENT CHARACTERISTICS

7 Characteristic: LINEAR
 8 Accuracy: +- 0,25 %
 9 Repeatability: +-0,1 %
 10 Adjustable range: YES
 11 Zero adjustment: AUTOMATIC
 12 Span adjustment: YES
 13 Operating limits: -20 TO +50 DEG C

BODY

14 Conn. size/type process: 8" 150 LB RF FLANGE
 15 Rating: 150 LB
 Connection span: 350 MM
 Body inner diameter: 203 MM
 18 Sour service spec.: SEAWATER
 19 Material, body: STEEL
 20 Material, liner: NEOPREN
 21 Protective coating: NORSOK

ELEMENT

22 Type: ELECTROMAGNETIC
 23 Min. conductivity: 5 MICR/SIM
 24 Material, element: ELECTRODES:HASTELOY C

CASE

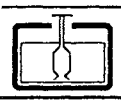
25 Mounting: REMOTE, SEE NOTE
 26 Extension length: NA
 27 Flying lead: NO
 28 Dimension: 240 x 170 x 154
 29 Material: POLYAMID
 30 Enclosure protection: IP67
 31 Hazardous area: NO
 32 Ex. classification: NA
 33 Sign. gland type/size: M20*
 34 Power gland type/size: M25*
 35 Protective coating: NA

ELECTRICAL DATA

36 Function: TRANSMITTER
 37 Output signal: 4-20 mA
 38 Output action: DIRECT
 39 Supply voltage: 220 VAC
 40 Consumption: 10 VA
 41 Load limitation: 800 OHM
 42 External power supply: YES

NOTE:

TO BE SUITABLE FOR SUBMERGED OPERATION
 THE FOLLOWING SHALL BE INCLUDED
 -METERING HEAD 3100-151X43100Y
 -SYLGARD FOR FILLING OF CONNECTION HEAD AFTHER TERMINATION 085U220
 -WALL MOUNTING BRACET 085U1001
 -SIGNAL CONVERTER 083F5003
 THE SIGNAL CONVERTER SHALL BE MOUNTED IN A DRY SUBSEA BOTTLE.



25.01.2000	ISSUED FOR PURCHASE	SMK	WBj	WBj	538-605-401	A
Date	Issue/description:	Prepared	Checked	Approved	Datasheet no.	Rev



Frank Mohn Flatoy AS
Oil & Gas Division

INSTRUMENT DATASHEET F03

MAGNETIC FLOWMETER

Doc. no.: 1562-050-4
Rev.: A Sign: SMK

Tag: 50-FT0110B
 Service description: FLOWMETER PUMP DISCHARGE
 P & ID Reference: 1562-006-1 / MAUR-FMF-P-0001
 Line/Equipment No.:
 Area Code: SUBSEA
 Package/Contract No.: 623414
 Process datasheet no.:

CALIBRATION VALUES
 Calibrated range: 0 - 600 m3/h
 Calibration factor: NA
 High-high setting: NA
 High setting: NA
 Low setting: NA
 Low-low setting: NA
 Note:

GENERAL

1 Type: MAGNETIC FLOWMETER
 2 Complete assembly: ELEMENT / REMOTE MOUNTED TRANSMITTER
 3 Manufacturer: DANFOSS
 4 Manufacturers model no.: MAG 3100-151F41100Y
 Mounting: INLINE
 Weight: 61 KG

INSTRUMENT CHARACTERISTICS

7 Characteristic: LINEAR
 8 Accuracy: +- 0,25 %
 9 Repeatability: +-0,1 %
 10 Adjustable range: YES
 11 Zero adjustment: AUTOMATIC
 12 Span adjustment: YES
 13 Operating limits: -20 TO +50 DEG C

BODY

14 Conn. size/type process: 8" 150 LB RF FLANGE
 Rating: 150 LB
 Connection span: 350 MM
 Body inner diameter: 203 MM
 Sour service spec.: SEAWATER
 19 Material, body: STEEL
 20 Material, liner: NEOPREN
 21 Protective coating: NORSOK

ELEMENT

22 Type: ELECTROMAGNETIC
 23 Min. conductivity: 5 MICR/SIM
 24 Material, element: ELECTRODES:HASTELOY C

CASE

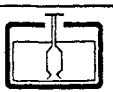
25 Mounting: REMOTE, SEE NOTE
 26 Extension length: NA
 27 Flying lead: NO
 28 Dimension: 240 x 170 x 154
 29 Material: POLYAMID
 30 Enclosure protection: IP67
 31 Hazardous area: NO
 32 Ex. classification: NA
 33 Sign. gland type/size: M20*
 34 Power gland type/size: M25*
 35 Protective coating: NA

ELECTRICAL DATA

36 Function: TRANSMITTER
 37 Output signal: 4-20 mA
 38 Output action: DIRECT
 39 Supply voltage: 220 VAC
 40 Consumption: 10 VA
 41 Load limitation: 800 OHM
 42 External power supply: YES

NOTE:

TO BE SUITABLE FOR SUBMERGED OPERATION
 THE FOLLOWING SHALL BE INCLUDED
 -METERING HEAD 3100-151X43100Y
 -SYLGARD FOR FILLING OF CONNECTION HEAD AFTHER TERMINATION 085U220
 -WALL MOUNTING BRACET 085U1001
 -SIGNAL CONVERTER 083F5003
 THE SIGNAL CONVERTER SHALL BE MOUNTED IN A DRY SUBSEA BOTTLE.



25.01.2000	ISSUED FOR PURCHASE	SMK	WBj	WBj	538-605-401	A
Date	Issue/description:	Prepared	Checked	Approved	Datasheet no.	Rev



Frank Mohn Flatøy AS
Oil & Gas Division

INSTRUMENT DATASHEET F03

MAGNETIC FLOWMETER

Doc. no.: 1562-050-4
Rev.: A Sign: SMK

Tag: 50-FT0110C
 Service description: FLOWMETER PUMP DISCHARGE
 P & ID Reference: 1562-006-1 / MAUR-FMF-P-0001
 Line/Equipment No.:
 Area Code: SUBSEA
 Package/Contract No.: 623414
 Process datasheet no.:

CALIBRATION VALUES
 Calibrated range: 0 - 600 m3/h
 Calibration factor: NA
 High-high setting: NA
 High setting: NA
 Low setting: NA
 Low-low setting: NA
 Note:

GENERAL

1 Type: MAGNETIC FLOWMETER
 2 Complete assembly: ELEMENT / REMOTE MOUNTED TRANSMITTER
 3 Manufacturer: DANFOSS
 4 Manufacturers model no.: MAG 3100-151F41100Y
 Mounting: INLINE
 Weight: 61 KG

INSTRUMENT CHARACTERISTICS

7 Characteristic: LINEAR
 8 Accuracy: +- 0,25 %
 9 Repeatability: +-0,1 %
 10 Adjustable range: YES
 11 Zero adjustment: AUTOMATIC
 12 Span adjustment: YES
 13 Operating limits: -20 TO +50 DEG C

BODY

14 Conn. size/type process: 8" 150 LB RF FLANGE
 Rating: 150 LB
 Connection span: 350 MM
 Body inner diameter: 203 MM
 Sour service spec.: SEAWATER
 Material, body: STEEL
 Material, liner: NEOPREN
 Protective coating: NORSOK

ELEMENT

22 Type: ELECTROMAGNETIC
 23 Min. conductivity: 5 MICR/SIM
 24 Material, element: ELECTRODES:HASTELOY C

CASE

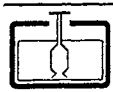
25 Mounting: REMOTE, SEE NOTE
 26 Extension length: NA
 27 Flying lead: NO
 28 Dimension: 240 x 170 x 154
 29 Material: POLYAMID
 30 Enclosure protection: IP67
 31 Hazardous area: NO
 32 Ex. classification: NA
 33 Sign. gland type/size: M20*
 34 Power gland type/size: M25*
 35 Protective coating: NA

ELECTRICAL DATA

36 Function: TRANSMITTER
 37 Output signal: 4-20 mA
 38 Output action: DIRECT
 39 Supply voltage: 220 VAC
 40 Consumption: 10 VA
 41 Load limitation: 800 OHM
 42 External power supply: YES

NOTE:

TO BE SUITABLE FOR SUBMERGED OPERATION
 THE FOLLOWING SHALL BE INCLUDED
 -METERING HEAD 3100-151X43100Y
 -SYLGARD FOR FILLING OF CONNECTION HEAD AFTHER TERMINATION 085U220
 -WALL MOUNTING BRACET 085U1001
 -SIGNAL CONVERTER 083F5003
 THE SIGNAL CONVERTER SHALL BE MOUNTED IN A DRY SUBSEA BOTTLE.



25.01.2000	ISSUED FOR PURCHASE	SMK	WBJ	WBJ	538-605-401	A
Date	Issue/description:	Prepared	Checked	Approved	Datasheet no.	Rev