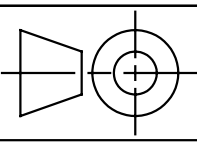


E 7-337-200-905-9
 PARTS LIST NUMBER DATE
 7-337-200-905-0999 1-14-05

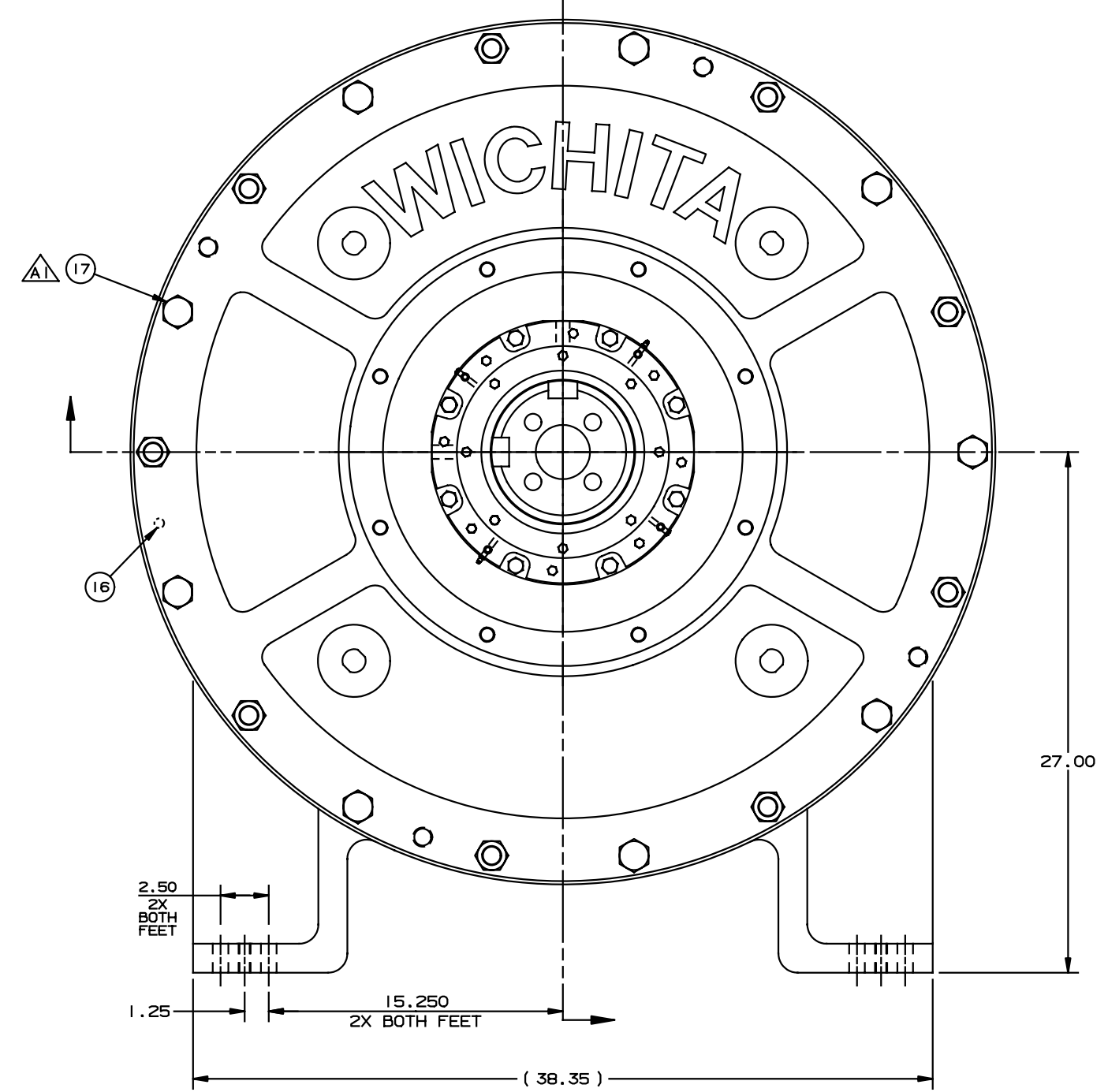
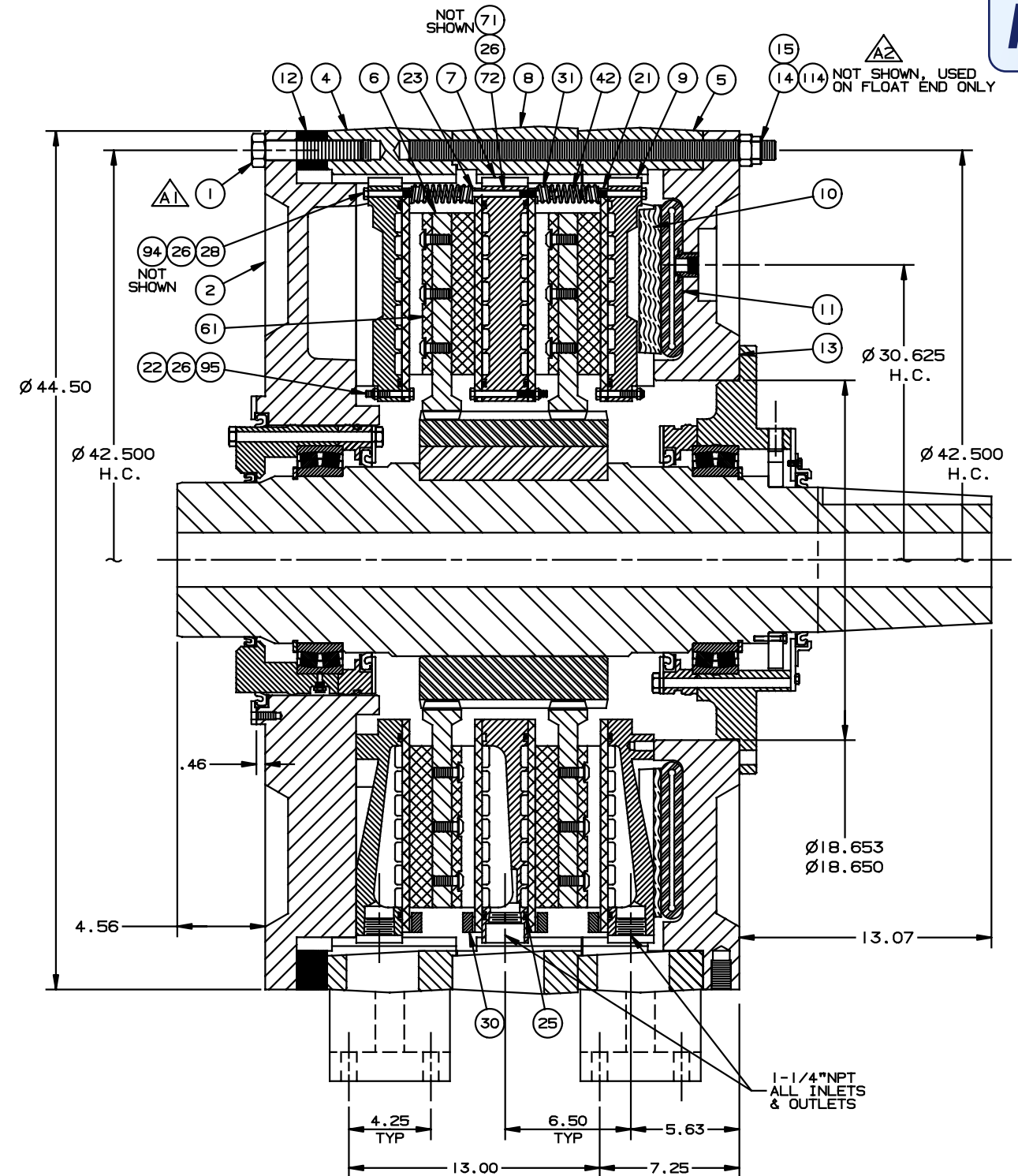
4-WATER OUTLETS MUST BE AT TOP TO COMPLETELY FILL BRAKE WITH WATER.
 3 WATER JACKETS: ONE STATIONARY WATER JACKET AND TWO MOVING WATER JACKETS

TORQUE 1" SS NUTS (ITEM 15) TO 145-160 FT-LB
 TORQUE 5/16" SS NUTS (ITEM 26) TO 10-11 FT-LB
 TORQUE 1/2" SS BHCS (ITEM 62) TO 42-46 FT-LB

TOLERANCES
 (UNLESS OTHERWISE SPECIFIED)
 DECIMALS DECIMALS
 (2) PLACES (3) PLACES
 ±.015" ±.007"



INFORMATION ONLY



- NOTES:
1. WATER SUPPLY THROUGH BRAKE MUST NOT BE LESS THAN 200 (TWO HUNDRED) GALLONS PER MINUTE FOR 2000 HP DISSIPATION CAPACITY.
 2. INLET COOLING WATER TEMPERATURE MUST NOT EXCEED 120°F.
 3. MINIMUM CLEARANCE SHOULD BE .16 TO .22
 4. COAT ALL GEAR TEETH WITH NEVER-SEEZ MARINE GRADE GREASE
 5. ON ASSEMBLY COAT ALL PILOTS WITH NEVER-SEEZ MARINE GRADE GREASE
 6. ALL PAINTED SURFACES TO BE EPOXY COATED PER STANDARD C7.2
 7. SHIP UNOPENED 1 LB. CAN OF NEVER-SEEZ GREASE WITH UNIT
 8. ON ASSEMBLY, COAT ALL NON-STAINLESS STEEL BOLTS WITH NEVER-SEEZ MARINE GRADE GREASE

REV.	DESCRIPTION	DATE OR E.C.N.
A2	CHG ITEM 14; ADD ITEM 114	050405
A1	ITEMS 1 & 17 WERE SHCS	050405

THIS DRAWING IS THE PROPERTY OF WICHITA CLUTCH AND IS SUPPLIED ON THE EXPRESSED CONDITION THAT IT SHALL NOT BE LENT, COPIED, REPRODUCED NOR DISCLOSED TO ANY OTHER PERSON, IN WHOLE OR IN PART WITHOUT THE WRITTEN CONSENT OF WICHITA CLUTCH, WICHITA FALLS, TX.
 WICHITA CLUTCH - WICHITA FALLS, TEXAS

DR. BY	CO	DATE
CH. BY	RWM	DATE
APPROVED BY:		DATE
SUPERSEDES:		DATE



236H KOPPER KOOL BRAKE W/DECK MOUNT RINGS
E 7-337-200-905-9
 SCALE: QUARTER