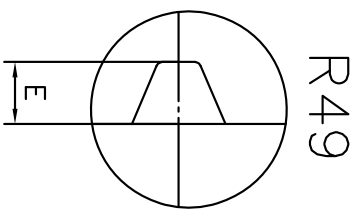
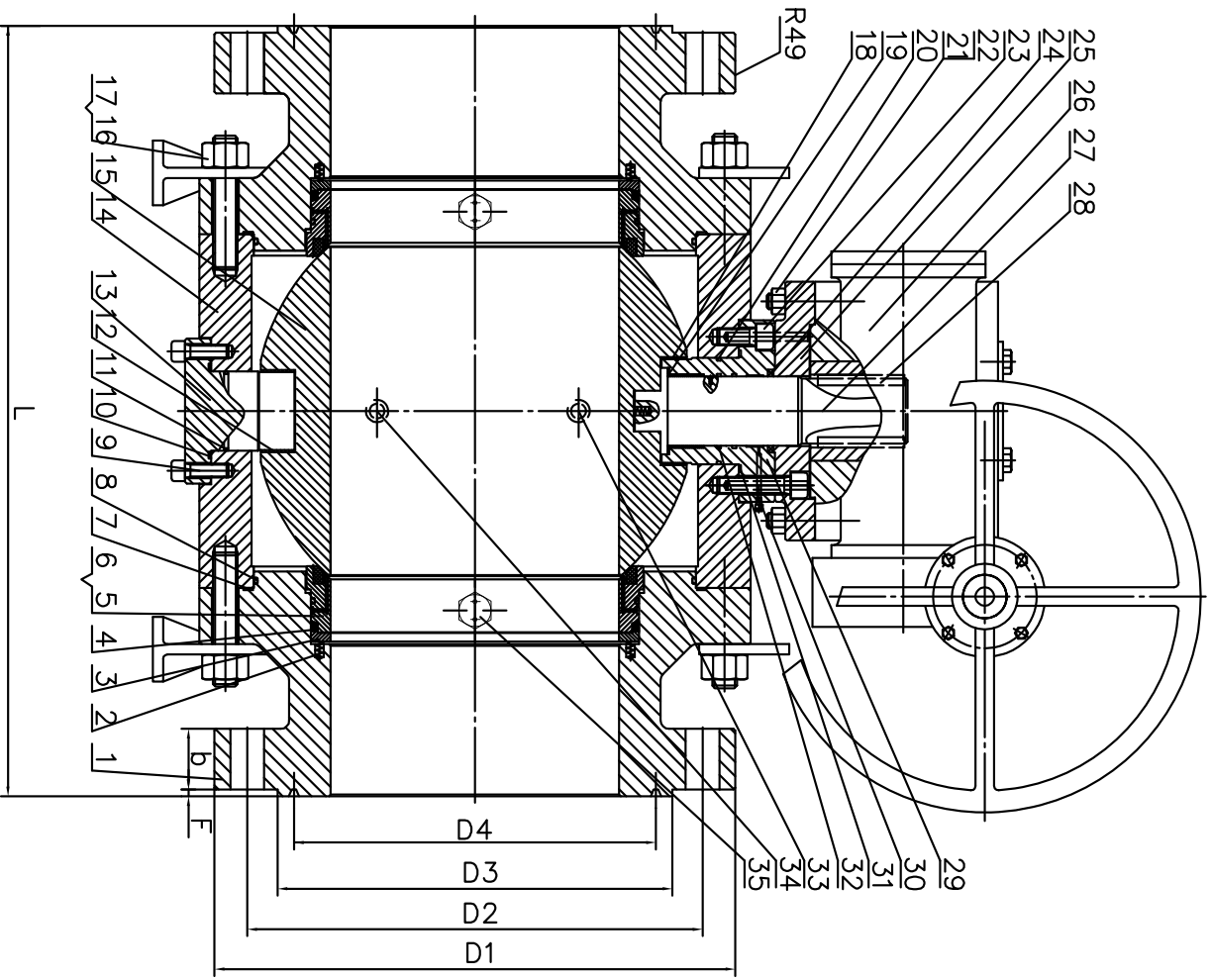


| Nominal Diameter | | Main Dimension (mm) | | | | | | | | | |
|------------------|-----|---------------------|-------|-----|-------|------|------|------|---------------|-----|--|
| inches | mm | D1 | D2 | D3 | D4 | b | E | F | n- ϕ d | L | |
| 8" | 200 | 470 | 393.7 | 308 | 269.8 | 63.5 | 7.92 | 7.92 | 12- ϕ 38 | 740 | |



| 35 | Injection Fitting | AISI 1025 | |
|----|-------------------|-----------------------|---------|
| 34 | Drain Valve | AISI 1025 | |
| 33 | Plug | AISI 1025 | |
| 32 | O-Ring | VITON | |
| 31 | Gasket | Graphite+SS304 | |
| 30 | Injection Fitting | AISI 1025 | |
| 29 | Packing Box | ASTM A105+ENP(0.03mm) | |
| 28 | Key | AISI 1045 | |
| 27 | Stem | 4140+ENP(0.03mm) | |
| 26 | Gear operation | Ductile Iron | |
| 25 | Connecting Plate | ASTM A105 | |
| 24 | Stem Packing | Graphite | |
| 23 | Screw | ASTM A193 B7 | |
| 22 | Nut | AISI 1035 | |
| 21 | Bolt | AISI 1025 | |
| 20 | O-Ring | VITON | |
| 19 | Thrust Washer | PTFE | |
| 18 | Beating | Steel Liner PTFE | |
| 17 | Bonnet Nut | ASTM A194 2H | |
| 16 | Bonnet bolt | ASTM A193 B7 | |
| 15 | Ball | ASTM A182 F304 | |
| 14 | Body | ASTM A105 | |
| 13 | Trunnion | ASTM A105+ENP | |
| 12 | Beating | Steel Liner PTFE | |
| 11 | O-Ring | VITON | |
| 10 | Gasket | Graphite+SS304 | |
| 9 | Screw | ASTM A193 B7 | |
| 8 | O-Ring | VITON | |
| 7 | Bonnet gasket | Graphite+SS304 | |
| 6 | Seat Ring | NYLON | |
| 5 | Seat | ASTM A105+ENP(0.03mm) | |
| 4 | Sealing Ring | Graphite | |
| 3 | Compression Ring | ASTM A105+ENP(0.03mm) | |
| 2 | Spring | INCONEL X750 | |
| 1 | Bonnet | ASTM A105 | |
| NO | PART NAME | MATERIAL | REMARKS |

TRUNNION BALL VALVES (900Lb)

| | | |
|-------------------------|-----|------------|
| Design and Manufacture | | API 6D |
| Face to Face Dimensions | | API 6D |
| Flange Ends Dimensions | | ASME B16.5 |
| Pressure Test | | API 6D |
| Drawing No | Rev | DATE |
| 1 | 0 | |