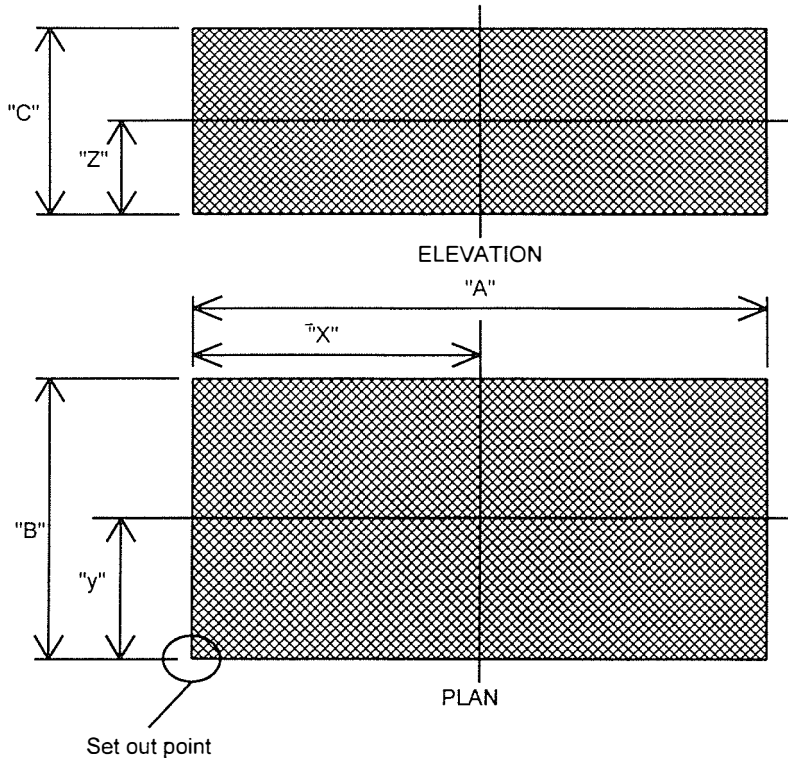


DATA SHEET DRILLING EQUIPMENT			DESCRIPTION OR SKETCH
EQUIPMENT TITLE: TOP DRIVE			
EQUIPMENT NO.: 65-00146, 65-00331			
LOCATION D60			
PROJECT No.: ST1603			
FUNCTIONAL DATA		See drawing: 111589 HD-D008-0010	
MATERIAL HANDLED	TUBULARS		
FUNCTION	HOISTING		
	ROTATING		
	CIRCULATING		
Load Rating	650 API TON		
Circ. Pressure barg	345		
Continuous torque KNm	45 @ 150 rpm		
Max rpm	225		
TORQUE WRENCH size	5-1/4" - 8-1/4" OD		
	Torque 115 KNm @ 2000 psig		
Motor air brake KNm	47.5 @ 90 psig		
Design	API spec 8C PSL-1 Note 4		
MECHANICAL DATA			
DRIVE	AC-Motor note 3		
TRANSMISSION	Gear		
AUXILIARES	Note 1		
Lubrication	Integrated		
Cooling system	Integrated		
Guide Dolly Assembly	Note 2		
Overtravell protection	N/A		
Overtorque portection	PLC controlled		
Location	Zone 2		
CONNECTIONS			
MK.	SIZE	SERVICE	
	5" 1002 fem	5000 psig mud connection	
	1" SAE	Hydraulic supply	
	1" SAE	Hydraulic return	
	1/2" SAE	Hydraulic drain	
	Cables	See drawing 111593 HD-D008-0006	
NOTES:			
1) 360° Rotating 10 port head, 5000 psig "S" pipe. Counterbalance system, IBOP valves, Hydraulic link tilt, crossover and saver subs for 6-5/8" and 5" DP adapter kits. Service loops. 350 ton 108" links and 500 ton 180" links, Retract dolly control system.			
2) Retractable with 45" retract distance.			
3) ABB HXR 450 LM8 690 VAC 3 phase moptor			
4) Certified by DNV including NPD data book			

DRILLING EQUIPMENT WEIGHT DATA SHEET			
Equipment Name:	TOP DRIVE	Project No.:	ST1603
Equipment No.:	65-00146, 65-00331	Location:	D60



OVERALL SIZES	
Dimension "A"	2942
Dimension "B"	3551
Dimension "C"	7620

CENTRE OF GRAVITY		
DIST.	DRY	OPER.
"X"	1471	1471
"Y"	1270	1270
"Z"	5182	5182

WEIGHT DATA

INFORMATION STATUS	DRY WT	OPER. WT	TEST WT	COMMENTS
Calculated	24400	24560		Only suspended equipment
As Weighed		24962		Only suspended equipment

HEAVIEST COMPONENT TO BE HANDLED FOR MAINTENANCE

Component	Motor Housing / Frame Assembly	Weight	16360

NOTES:

Includes:

- 65-00331 Retract dolly.
- 108" Links

Excludes.:

- Service loops
- Derrick mounted equipment
- 180" Links